

---

## Dairy and Residence, Former



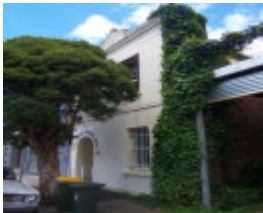
Dairy - Keele Street



Dairy - Keele Street



Dairy - Keele Street



Dairy - Keele Street

---

### Location

51 Keele Street, COLLINGWOOD VIC 3066 - Property No 125045

### Municipality

YARRA CITY

### Level of significance

Incl in HO area indiv sig

### Heritage Overlay Numbers

HO108

### Heritage Listing

Yarra City

---

### Statement of Significance

Last updated on - January 1, 2008

The following wording is from the Allom and Lovell Building Citation, 1998 for the property. Please note that this is a "Building Citation", not a "Statement of Significance". For further information refer to the Building Citation held by the City of Yarra.

#### History:

In 1891 William Kenneley occupied a diary on this site. By 1904 Albert Williams was in residence here, and by 1912 the occupant was Jno Cordwell.

#### Description:

51 Keele Street is a two-storey building of brick construction with a ruled rendered finish. The ground floor entrance is located within a semi-circular arched porch, and windows are double hung sashes with simple rendered dressings. Above the first floor cornice is a pediment, flanked by scrolls.

#### Significance:

51 Keele Street is of local architectural significance. The building is a surviving example of a 19th century small industrial building, combining a diary and residence. The building is of a typical terrace form, with modest ornamentation.

Heritage Study/Consultant	Yarra - City of Collingwood Conservation Study, Andrew Ward & Associates, 1989; Yarra - City of Collingwood Conservation Study, Andrew Ward & Associates, 1995; Yarra - City of Yarra Heritage Review, Allom Lovell & Associates, 1998; Yarra - City of Yarra Review of Heritage Overlay Areas, Graeme Butler & Associates, 2007;
Construction dates	1891,
Hermes Number	103782
Property Number	

---

## Physical Description 1

51 Keele Street is a two-storey building of brick construction with a ruled rendered finish. The ground floor entrance is located within a semi-circular arched porch, and windows are double hung sashes with simple rendered dressings. Above the first floor cornice is a pediment, flanked by scrolls.

## Integrity

not assessed

*This place/object may be included in the Victorian Heritage Register pursuant to the Heritage Act 2017. Check the Victorian Heritage Database, selecting 'Heritage Victoria' as the place source.*

*For further details about Heritage Overlay places, contact the relevant local council or go to Planning Schemes Online <http://planningschemes.dpcd.vic.gov.au/>*