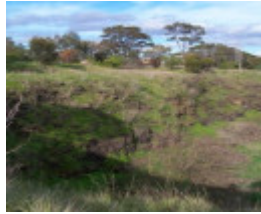

Fitzroy City Council Quarry, later part Westfield Reserve, later Bluestone quarry, YARRA BEND PARK



Fitzroy City Council Quarry



Fitzroy City Council Quarry



Fitzroy City Council Quarry

Location

off Quarry Yarra Bend Road, YARRA BEND, City of Yarra

Municipality

YARRA CITY

Level of significance

Incl in HO area indiv sig

Heritage Overlay Numbers

HO300

Heritage Listing

Yarra City

Statement of Significance

Last updated on -

This site is subject to two citations. Please find below the Landscape Citation developed for the City of Yarra in 1998, followed by the Citation in the Yarra Bend Conservation Plan developed for Parks Victoria in 1998.

The following wording is from the John Patrick Landscape Citation, 1998 for the property. Please note that this is a "Landscape Citation", not a "Statement of Significance". For further information refer to the Landscape Citation held by the City of Yarra.

Landscape Citation, 1998

Description

The Westfield Reserve, off Yarra Bend Road, Fairfield, has a remnant quarry face along the Merri Creek. The quarry was believed to have operated since the 1840s, and was accessed directly from Heidelberg Road.

Remnant Fabric (Man Made)

The quarry is located on the bank of the Merri Creek. Quarrying activities have left sheer cliffs that are quite prominent from the western bank of the creek (Hall Reserve).

Remnant Fabric (Vegetation)

None noted. The creek is lined with Willows (*Salix* sp.) that are most likely weedy. They obscure the views from Hall Reserve to the quarry faces.

Statement of Significance

Westfield Park is of local interest as an example of an early and important industry along the Merri Creek, which offers considerable interpretive possibilities.

The following wording is from the Yarra Bend Conservation Plan, 1998 for the site. Please note that this is a "Citation", not a "Statement of Significance".

The following wording is from the citation in the Yarra Bend Conservation Plan developed for Parks Victoria in 1998, and provided to Council as part of Amendment L78 to the Yarra Planning Scheme

Citation

Historical Summary

- A bluestone quarry was opened by the Fitzroy Council in the current Westfield reserve area, to supply material for roads and public buildings in the 1840's. A second quarry was later opened nearby by Heidelberg Council, though the poor quality of the stone soon saw it abandoned. Both these quarries have long since been filled in.
- A third relatively small quarry, cut into the steep escarpment of the Merri Creek, was still operating in the 1920's. The remains of this quarry are those which are still visible today.
- This quarry was taken over by Heidelberg Council from the Dennis family who ran a road contracting business.
- The basalt in it was of very poor quality.

Summary of Significance

The quarry is of local interest as an example of an early and important industry along the Merri Creek.

Heritage
Study/Consultant

Yarra - Northcote Urban Conservation Study, Graeme Butler & Associates, 1982;
Yarra - City of Yarra Heritage Review, Allom Lovell & Associates, 1998; Yarra - City
of Yarra Review of Heritage Overlay Areas, Graeme Butler & Associates, 2007;

Construction dates 1850,
Hermes Number 103864
Property Number

Physical Description 2

Precise location required

Physical Description 1

Westfield Reserve

The planting here, like Northcote Park but more so, is of such a varied and indiscriminate nature as to possess little landscape value of sense of period.

Mature Silver Poplars ('A' on map supplied in report) line the Yarra Bend Drive and thus frame the reserve on the east. However these trees have been drastically pruned back, presumably because of nearby wires. Similar trees exist in a group to the west whilst some young European Ash (B) line what formerly was a riverside track in this location (partially gone); to the south. The north border is composed of an uncertain mixture of Mahogany Gums (D), Cypress (E) and a mature Gum at the north-west corner, whilst another former walkway is indicated by the survival of a Lombardy Poplar (F) row, going north-south. A Golden Elm and a variety of recently introduced natives, in particular a row of inappropriate young Blue Gums (G), create further visual confusion.

Integrity

not assessed

This place/object may be included in the Victorian Heritage Register pursuant to the Heritage Act 2017. Check the Victorian Heritage Database, selecting 'Heritage Victoria' as the place source.

For further details about Heritage Overlay places, contact the relevant local council or go to Planning Schemes Online <http://planningschemes.dpcd.vic.gov.au/>