

Athelston



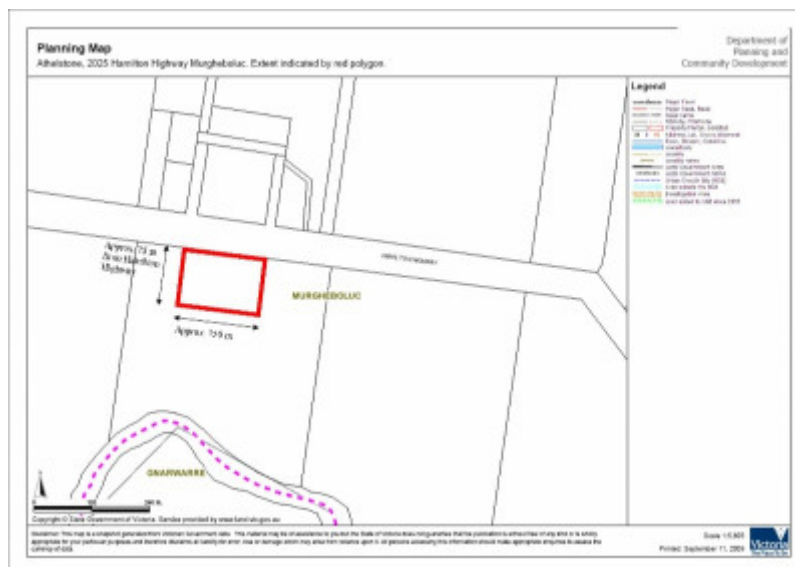
Athelston, 2025 Hamilton Highway, Murgheboluc viewed from north-east.



Athelston, 2025 Hamilton Highway, Murgheboluc viewed from north.



Athelston, 2025 Hamilton Highway, Murgheboluc viewed from east.



Extent of registration map

Location

2025 Hamilton Highway, MURGHEBOLUC VIC 3221 - Property No 23600290

Municipality

GOLDEN PLAINS SHIRE

Level of significance

Included in Heritage Overlay

Heritage Overlay Numbers

Heritage Listing

Golden Plains Shire

Statement of Significance

Last updated on - August 3, 2009

What is Significant?

Athelston, 2025 Hamilton Highway, Murgheboluc, as a farm, dates from the mid 1850s when it was established by Thomas Jewell (1794-1858) from Devon. The present house, which may incorporate parts of earlier structures, appears to date mostly from the mid 1870s. It is a single-storey bluestone building with a traditional four-room plan with other rooms beyond and a central passage. The cast iron verandah was erected in 1991. Further changes occurred later in the twentieth century. Athelston is located on a slight rise and faces east, rather than towards the road, looking across a modern orchard and the flood plain of the Barwon River. The ownership of the property reflects a close relationship between several prominent local families. Thomas Jewell and his wife Mary, (nee Southcombe or Honeychurch) had two children, John and Tamzin. Christopher Hocking, a neighbour was Tamzin's husband and he managed the farm after John died in 1886. The Hockings owned the farm until 1929 when it was occupied by Alice Read who owned it briefly in the early 1930s. From 1933 to the early 1960s, George Victor Winstanley and his wife Lucy Cole owned the property and grew vegetables after which the property passed to his son, Eric who lived there with his sister, Edna until his death in 1987. The current owner, Cr. David Cotsell who was responsible for the alterations and additions, has been Mayor of the Golden Plains Shire. The house remains largely intact to its extended condition with good integrity. It is in excellent condition.

How is it Significant?

Athelston, 2025 Hamilton Highway, Murgheboluc is of historical and architectural significance to the Golden Plains Shire.

Why is it Significant?

Athelston, 2025 Hamilton Highway, Murgheboluc is of historical significance because it is representative of the modest riverside farms established in the shire from the 1850s, a pattern of freehold settlement in contrast to the broad-acre occupation of the land by squatters. It has particular significance as the home of Cr David Cotsell, former Mayor of the Bannockburn and Golden Plains Shires and his wife Anne who were responsible for the building's renovation and restoration in 1989-91. Athelston is of architectural significance as a representative example of the modest and conservative dwellings which accommodated often very large families on small farms.

Heritage Study/Consultant	Golden Plains - Golden Plains Shire Heritage Study Phase 2, Heritage Matters P/L, 2009;
Hermes Number	104345
Property Number	

Physical Description 1

Athelston is a single-storey bluestone house located on a slight rise beside the Hamilton Highway and opposite the former Murgheboluc State School and the entrance to the modern recreational reserve. Unusually, the house faces east rather than addressing the road. The plan of the house is conventional with the original section comprising four rooms and a central passage. Because of the relatively steep fall in the land there is a step down to the front hall, marked by an archway above, from the rear. The house has been extended at the rear, incorporating fabric from the original service wing and introducing an attic storey. This section was built with bluestone retrieved from the ruins of The Hermitage, a farmhouse located on the bank of the Barwon River immediately to the south of Athelston. The bull-nosed L-shaped verandah has been sympathetically reconstructed. An extra level has been created within the roof space. The house looks east across a modern orchard towards the flood plain of the Barwon River. A large modern dormer looks south towards the River.

Historical Australian Themes

The Australian Heritage Commission devised the Australian Historic Themes in 2001. The following themes have influenced the historical development of Athelston.

3 Developing Local, Regional And National Economies

3.5 Developing primary production

3.5.1 Grazing stock

3.5.2 Breeding animals

5 Working

5.8 Working on the land

8 Developing Australia's Cultural Life

8.14 Living in the county and rural settlements

Intactness

Relatively intact (the front four rooms) with a new rear wing, attic rooms and verandah constructed sympathetically in 1989-91.

Integrity

Good integrity.

Physical Description 2

Extent of Registration: to the whole of the house, but excluding the interiors, and the land shown hatched on the plan comprising the immediate curtilage of the house being a rectangle 75.0 m x 150.0 m based on the Hamilton Highway.

Extent of Registration

Athelston, 2025 Hamilton Highway, Murgheboluc and an area of land 75.0 m x 150.0 m based on the Hamilton Highway.

This place/object may be included in the Victorian Heritage Register pursuant to the Heritage Act 2017. Check the Victorian Heritage Database, selecting 'Heritage Victoria' as the place source.

For further details about Heritage Overlay places, contact the relevant local council or go to Planning Schemes Online <http://planningschemes.dpcd.vic.gov.au/>