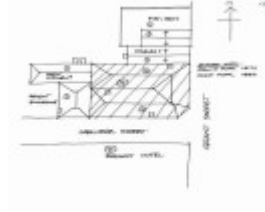

Stoney's Bridge Inn Hotel



Stoney's Bridge Inn Hotel



Stoney's Bridge Inn Hotel

Location

59 Grant Street MADDINGLEY, MOORABOOL SHIRE

Municipality

MOORABOOL SHIRE

Level of significance

Included in Heritage Overlay

Heritage Overlay Numbers

HO161

Heritage Listing

Moorabool Shire

Statement of Significance

Last updated on - June 1, 1995

A two-storey brick rendered corner hotel built in 1872 and enlarged in 1886 to capitalise on the (then) new rail to link Melbourne.

It is of local historical significance as a representative example of and retaining relatively intact characteristics of its type : a town hotel of the late nineteenth century.

Finally it retains local social significance to the community as a known and valued part of its identity and a local landmark.

Heritage Study/Consultant	Moorabool - Bacchus Marsh Heritage Study 1995, Richard Peterson and Daniel Catrice, 1995;
Other Names	Bridge Inn,
Hermes Number	116612
Property Number	

Physical Conditions

Very good

Intactness

Reasonable. Lacks its magnificent and unusual balcony, its corner entrance and ground floor windows have been altered. Brickwork has been painted. (It was not rendered, originally).

Physical Description 1

Two-storey corner rendered brick hotel, with single storey attached buildings. It has a hip-roof' with three Classical-moulded chimneys and a splayed corner whose first-floor window has a round head. The northern early addition appears to have been stables and a western early addition, a kitchen with a massive external chimney.

Historical Australian Themes

Township/Community life.

This place/object may be included in the Victorian Heritage Register pursuant to the Heritage Act 2017. Check the Victorian Heritage Database, selecting 'Heritage Victoria' as the place source.

For further details about Heritage Overlay places, contact the relevant local council or go to Planning Schemes Online <http://planningschemes.dpcd.vic.gov.au/>