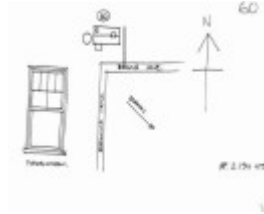


---

# Hill Farm



House, Browns Lane



House, Browns Lane

---

## Location

81 BROWNS LANE PARWAN, MOORABOOL SHIRE

## Municipality

MOORABOOL SHIRE

## Level of significance

Included in Heritage Overlay

## Heritage Overlay Numbers

HO194

## Heritage Listing

Moorabool Shire

---

## Statement of Significance

Last updated on - August 23, 2024

### What is significant?

Hill Farm, 81 Browns Lane, Parwan, is significant. The following features contribute to the significance of the place: - - The brick farmhouse (c.1860s) The brick and timber outbuildings and the associated brick wells The modern addition to the rear of the brick house and the modern outbuildings and tanks are not significant.

### How is it significant?

Hill Farm, located at 81 Browns Lane, Parwan, is of local historical significance to the Moorabool Shire.

### Why is it significant?

Hill Farm, located at 81 Browns Lane, Parwan is of historical significance as it demonstrates the pattern of settlement and establishment of small farms within the area, and more broadly across the municipality as a result of the 1862 Land Acts, which allowed selectors to achieve security of tenure. It is associated with the early establishment of the Parwan agricultural district and recognised as one of the oldest farming complexes within Parwan. (Criterion A) Hill Farm is considered a rare surviving example of an 1860s farming complex with later nineteenth century developments, including the brick house (c.1863), brick outbuilding and well (c.1860s), weatherboard outbuildings and wells (c.1880-1900). There are only a small number of farming complexes from the nineteenth century which survive in the former Parwan Agricultural district, and the retained complex of buildings is particularly unusual in the locality. (Criterion B)

Heritage Study/Consultant	Moorabool - Bacchus Marsh Heritage Study 1995, Richard Peterson and Daniel Catrice, 1995;
Hermes Number	116666
Property Number	

---

### Physical Conditions

Good

### Intactness

Good. This appears to be an early cottage altered in the 1920s.

SIGNIFICANT INTACT ELEMENTS:

FORM. FACADE. VERANDAH. USE. CHIMNEYS. WINDOWS.

### Physical Description 1

A rectangular symmetrical gable-roofed timber pavilion, across the site. This is at the 90° bend in Browns Lane. The upper gable has a decorative timber rail, there are two chimneys, symmetrically on the gable.

Double-hung sash windows have an unusual configuration of glazing bars, with four upper panes and two lower, within the upper sash. Rafters are exposed.

### Historical Australian Themes

Townships

*This place/object may be included in the Victorian Heritage Register pursuant to the Heritage Act 2017. Check the Victorian Heritage Database, selecting 'Heritage Victoria' as the place source.*

*For further details about Heritage Overlay places, contact the relevant local council or go to Planning Schemes Online <http://planningschemes.dpcd.vic.gov.au/>*