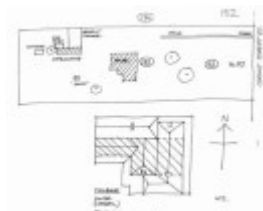

House, Millbank



House, Millbank



House, Millbank



House, Millbank



House, Millbank

Location

37 - 41 Grant Street BACCHUS MARSH, MOORABOOL SHIRE

Municipality

MOORABOOL SHIRE

Level of significance

Included in Heritage Overlay

Victorian Heritage Register (VHR) Number

H0263

Heritage Overlay Numbers

HO5

Heritage Listing

Moorabool Shire

Statement of Significance

Last updated on - June 1, 1995

An early stone and brick homestead complex built in 1855 by William Grant, with outbuildings, fences and garden, including important trees. One outbuilding contains some early rare wattle and daub construction and another, the "dairy" has early drop split slab construction. The property remained in the Grant family for 123 years.

The property is of state historical significance as a representative embodiment of a way of life, demonstrating the changing sequence of patterns of occupancy, over time. It demonstrates an association with an important Bacchus Marsh family. It is a pioneering homestead in Bacchus Marsh. It is of state architectural significance as a relatively intact example of an early homestead and garden and outbuildings, including rare surviving examples of early construction techniques.

Heritage Study/Consultant	Moorabool - Bacchus Marsh Heritage Study 1995, Richard Peterson and Daniel Catrice, 1995;
Hermes Number	117140
Property Number	

Physical Conditions

Very Good. It is well maintained. The garden near the front street may be threatened with road widening or subdivisions.

Intactness

Reasonable. The homestead appears to have been heavily restored.

Garden. The excision of the front flatter portion of land along Grant Street as part of a former subdivision will unfortunately detract from the garden and the views to the house once development takes place. The current owners of Millbank appear keen to retain the property in its original "cottage form".

SIGNIFICANT INTACT ELEMENTS:

FORM. VERANDAH.

CHIMNEYS. MATERIALS

FENCES/GATES. OUTBUILDINGS

GARDEN. TREES.

Physical Description 1

An early homestead complex consisting of house, early outbuilding, early "dairy", fence and gates, and garden remnant elements.

The homestead is masonry generally with hip roofs. The early (c 1855) section has stone walls, said to be locally quarried. This consists of two parallel roofs, the rear being L shaped. This was extended on both sides in polychromatic brickwork (c 1900) . There is a skillion verandah at front, returning at right, and another in the angle at the rear. Barges are loopy and at front are French windows. The outbuilding has a small section of internal partition in rare wattle and daub construction, however the wattles are not true basketweave configuration and the horizontal members are not grooved to receive them, as they should properly be. The "dairy" building has south and east walls of drop-slab construction, which is uncommon, but not rare.

The drive is approached from Grant Street through a fragment of picket fence, with triangular section rails. It has V-shaped and spearhead picket heads, which are arranged in a catenary curve. The substantial timber posts have moulded caps, and others have axed spearhead tops. There are also H.V. McKay Sunshine vehicular iron gates.

Physical Description 2

Garden: The garden of Millbank slopes steeply to the front of the house with a curving gravel driveway to the north side of the property. The garden is dominated by two Bunya Bunya pines in the front garden which can be seen along Grant Street. The garden has an informal path leading to the front door, under a rose covered arch halfway up the slope.

Ageing fruit trees are planted as specimens in the lawns and cottage perennials and bush roses are currently being rearranged into stone edged garden beds. The rear garden is dominated by a magnificent Peppercorn tree of approximately eight metres diameter, with branches weeping down to the lawn below. A new orchard has been planted in the north west corner. Over the years storm damage has severely altered the shape of the two cypresses at the front entry gate.

Plant Species include: *Araucaria bidwillii*, Bunya Bunya Pine. *Pinus pinea*, Stone Pine. *Cupressus macrocarpa*, Monterey Cypress. *Melia azadirach*, White Cedar. *Populus sp.*, Poplar. *Morus nigra*, Mulberry. *Madura pomifera*, Osage Orange. *Eriobotrya japonica*, Loquat. *Koeleruteria paniculata*, Golden Rain Tree. *Schinus molle*, Peppercorn Tree. *Grevillea robusta*, Silky Oak. *Cedrus deodara*, Himalayan Cedar. *Vitis sp.*, Grape Vines. *Agapanthus orientalis*, Agapanthus.

6 Inspection with permission of the owner, Mrs Annie Hudson, 24 January 1995.

Historical Australian Themes

Pastoralism

This place/object may be included in the Victorian Heritage Register pursuant to the Heritage Act 2017. Check the Victorian Heritage Database, selecting 'Heritage Victoria' as the place source.

For further details about Heritage Overlay places, contact the relevant local council or go to Planning Schemes Online <http://planningschemes.dpcd.vic.gov.au/>