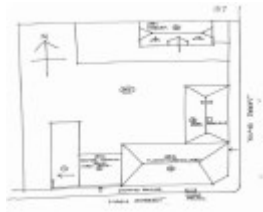

Hotel (Royal) and Stables 200 Main St and 3 Young St



Royal Hotel.



Royal Hotel.



Royal Hotel.



Royal Hotel.



Royal Hotel.

Location

200 Main Street (NW Cnr Young Street) and 3 Young BACCHUS MARSH, MOORABOOL SHIRE

Municipality

MOORABOOL SHIRE

Level of significance

Included in Heritage Overlay

Heritage Overlay Numbers

HO113

Heritage Listing

Moorabool Shire

Statement of Significance

Last updated on - June 1, 1995

An early two-storey corner brick hotel built in about 1863, part of which was once used as banks. It has splendid two-storey architect-designed stables (1891).

The Royal has local historical significance for its association with developments in the community life of the town, as a business on the Ballarat Road, for its hospitality and as a representative embodiment of the community's life for over 130 years.

It is of local architectural significance as a representative example of a relatively intact early hotel and for the survival of its stables, as a building type. Finally it is of social significance as a traditional focus and meeting place for the community and for travellers.

Heritage Study/Consultant	Moorabool - Bacchus Marsh Heritage Study 1995, Richard Peterson and Daniel Catrice, 1995;
Other Names	Murray's Family Hotel; McCanny's Family Hotel;; National Bank of Australia; Colonial Bank.,
Hermes Number	117293
Property Number	

Physical Conditions

Good

Intactness

Hotel: Fair. **Stables:** Good. The hotel corner first floor window has been sealed. Various doors have become windows and windows, doors. The horsetrough appears to have replaced an earlier one. It is now filled in. The single storey front has been altered. Chimneys have been removed. The stables windows have been altered and probably there are ground level alterations, now obscured. Finials are truncated.

Physical Description 1

A two storey nineteenth century hotel of tuckpointed brick. It has 5 bays with a 3 bay single storey addition to Main Street and 2 bays with a 6 storey early addition to Young Street. It has hip roofs with rock-face stone quoins at corners, and at the Main Street entrance, which has a label-mould over an expressed flat lintel. Other openings have rock-faced stone lintels. There is a dado of 1930s ceramic tiles on Main Street. The corner bar has two Edwardian leadlight decorative windows inscribed "Bar" on a scroll.

The Young Street addition is entirely brick on a rock-faced ashlar base. Its double-hung sash windows have single vertical glazing bars. The Young Street door has sidelights and an annular fanlight, with a guilloche moulding on the doorhead. Eaves have timber brackets in pairs over the windows. There are two chimneys here, with mouldings. There never appears to have been a verandah.

On the Main Street footpath, which is paved with pre-cast concrete diamond *pavers*, is a reinforced concrete *horsetrough* "Donated by Anni s & George Gills. Australia ".

At the rear is a two-storey *stables*. This has a half-hipped roof with finials, an attic gable with gantry, doors, gablet vents and a pendant barge. Generally there is quadrant spouting which oddly extends across the gable ends, on a false 'eaves' and fascia, and ogee spouting on the barges giving the effect of a truncated pediment. Below the line of the quadrant gutter around the building is a brick band, 5 courses deep. Gable-end openings have fine tuckpointed voussoir brick-heads. Brickwork is Flemish bond. There are cast-iron vents over the windows on the northern side. The building is surrounded by a recent single-storey skillion roofed store. The interior was not inspected.

Usage/Former Usage

USE: Hotel

PREVIOUS USE: Hotel and bank.

This place/object may be included in the Victorian Heritage Register pursuant to the Heritage Act 2017. Check the Victorian Heritage Database, selecting 'Heritage Victoria' as the place source.

For further details about Heritage Overlay places, contact the relevant local council or go to Planning Schemes Online <http://planningschemes.dpcd.vic.gov.au/>