

LIME-BURNING KILN



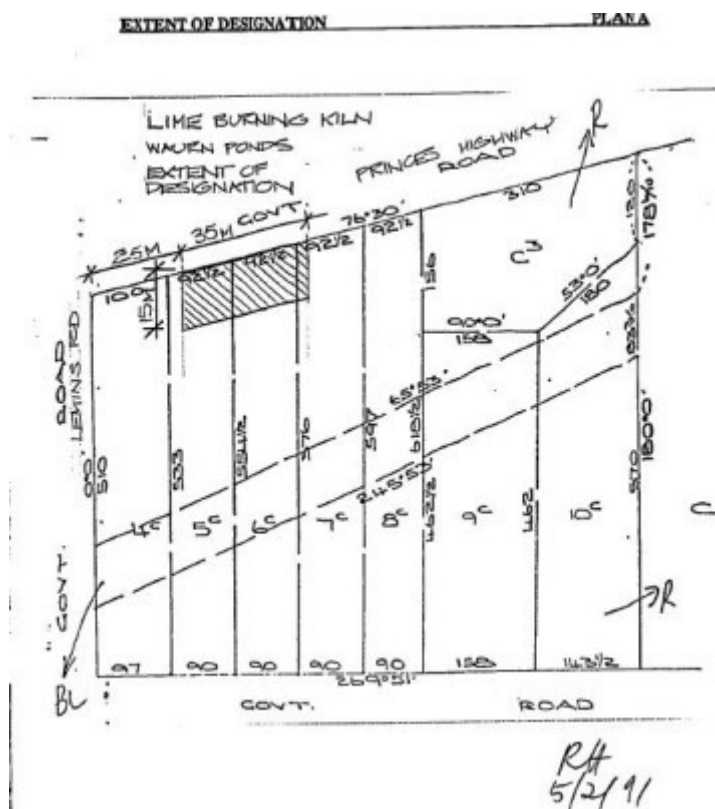
LIME-BURNING KILN SOHE
2008



LIME-BURNING KILN SOHE
2008



1 lime burning kiln waurn
ponds front view apr1997



H0866 h0866 plan

Location

PRINCES HIGHWAY AND 110 LEMINS ROAD (REAR) WAURN PONDS, GREATER GEELONG CITY

Municipality

GREATER GEELONG CITY

Level of significance

Registered

Victorian Heritage Register (VHR) Number

H0866

Heritage Overlay Numbers

HO377

VHR Registration

April 17, 1991

Heritage Listing

Victorian Heritage Register

Statement of Significance

Last updated on - August 23, 1995

SOURCE: REPORT TO MINISTER

STATEMENT OF SIGNIFICANCE

LIME BURNING WAS CARRIED ON FROM ABOUT 1835 ON THE NEPEAN PENINSULA AND AT LIMEBURNERS POINT GEELONG, WHILE THE INDUSTRY PROVIDED THE BASIS FOR SETTLEMENT AT PORTSEA, RYE AND SORRENTO. FROM THE 1860S LIMEBURNING CAME TO BE CONDUCTED ON A MORE PROFESSIONAL BASIS. LARGER AND MORE SUBSTANTIAL KILNS WERE BUILT AND IT IS THE REMAINS OF THESE WHICH COMPRISE THE BULK OF THAT WHICH SURVIVES OF NINETEENTH CENTURY LIMEBURNING BUSINESSES.

THE WAURN PONDS KILN IS BELIEVED TO HAVE BEEN BUILT IN 1882 IN AN AREA NOTED FOR LIME PRODUCTION AND QUARRYING ACTIVITIES. IT WAS KNOWN FIRST AS HOLDSWORTH'S KILN AND LATER AS MCCANN'S LIME KILN.

THE MCCANN FAMILY AND NOTABLY, NICHOLAS MCCANN, THE CELEBRATED STONEMASON, ENTREPRENEUR AND QUARRYMAN, AND HIS SON, PETER, PLAYED A SPECIAL ROLE IN VICTORIA'S LIME INDUSTRY AND BUILDING TRADE. PETER MCCANN WAS BORN IN PARRAMATTA, NEW SOUTH WALES, AND CAME TO VICTORIA IN 1837. IN 1844 HIS FATHER, NICHOLAS, OPENED A QUARRY UNDER THE NAME OF MCCANN AND SONS AT HIS PROPERTY, FAIRVIEW FARM, AT CERES. IT WAS REPUTED TO HAVE GIVEN A VERY GOOD QUALITY FREESTONE. WITH THE HELP OF HIS SON, PETER, MCCANN AND SONS PROVIDED STONE FOR ST PAUL'S CATHEDRAL AND WESLEY COLLEGE IN MELBOURNE AS WELL AS BUILDINGS IN MANY OTHER PARTS OF THE COLONY. PETER MCCANN WAS THE OWNER OF THE CELEBRATED WAURN PONDS QUARRIES. HE ALSO OWNED A QUARRY AT BATESFORD. PETER MCCANN WAS AN IMPORTANT CERES CITIZEN, A MEMBER OF THE LOCAL ROAD BOARD AND A JUSTICE OF THE PEACE.

THE MCCANN FAMILY WAS ASSOCIATED WITH LIMEBURNING ACTIVITIES AT FYANSFORD, BATESFORD AND WAURN PONDS. DURING THE 1880S, LIME PRODUCED FROM KILNS AT LARA AND WAURN PONDS WAS CONSIDERED SUPERIOR FOR BUILDING PURPOSES TO THAT FROM LIMEBURNERS POINT. TODAY, NO LIME KILNS SURVIVE AT LARA. THE WAURN PONDS LIME

KILNS OPERATED UNTIL THE 1970S. THE EXTANT KILN SURVIVES, ALTHOUGH COVERED BY OVERBURDEN FROM ADJACENT QUARRYING OPERATIONS CARRIED OUT BY CR WILTSHIRE, WHO OWNS BOTH THE PRESENT QUARRY AND THE OLD KILN.

THE WAURN PONDS LIME KILN IS OF STATE IMPORTANCE FOR A NUMBER OF REASONS:

THE KILN IS AN IMPORTANT SURVIVING INDUSTRIAL STRUCTURE IN AN AREA NOTED FOR LIME PRODUCTION AND QUARRYING ACTIVITIES. FROM THE 1880S, WHEN IT WAS BUILT, LIME PRODUCED BY KILNS AT WAURN PONDS AND LARA WAS CONSIDERED SUPERIOR TO THAT OF LIMEBURNERS POINT FOR BUILDING CONSTRUCTION IN THE WESTERN DISTRICT.

THE WAURN PONDS KILN IS ONE OF A VERY FEW SURVIVING 19TH CENTURY VICTORIAN KILNS, IT IS RELATIVELY INTACT AND DATES FROM A MOST IMPORTANT PERIOD IN THE HISTORY OF THE LIME INDUSTRY. ONLY SEVEN SURVIVING KILN SITES HAVE BEEN POSITIVELY IDENTIFIED, TWO OF WHICH (FOSSIL BEACH AND FYANSFORD) CONTAIN RELICS ONLY, AND ONE OF WHICH (LIMEBURNERS POINT, GEELONG) CONTAINS FOUR KILNS IN VARYING STAGES OF DERELICTION.

THE BRICK WAURN PONDS KILN IS AN EXAMPLE OF TRADITIONAL 19TH CENTURY TECHNOLOGY USED IN THE LIMEBURNING INDUSTRY IN VICTORIA. IT IS OF PARAMOUNT IMPORTANCE TO INDUSTRIAL ARCHAEOLOGY IN VICTORIA.

IT IS OF HISTORIC IMPORTANCE FOR ITS ASSOCIATIONS WITH THE NOTABLE MCCANN FAMILY, WHICH FROM THE LATE 1830S PLAYED A SIGNIFICANT ROLE IN THE QUARRYING, LIMEBURNING AND BUILDING TRADES IN THE WESTERN DISTRICT, IN MELBOURNE AND, INDEED, THROUGHOUT VICTORIA.

Permit Exemptions

General Exemptions:

General exemptions apply to all places and objects included in the Victorian Heritage Register (VHR). General exemptions have been designed to allow everyday activities, maintenance and changes to your property, which don't harm its cultural heritage significance, to proceed without the need to obtain approvals under the Heritage Act 2017.

Places of worship: In some circumstances, you can alter a place of worship to accommodate religious practices without a permit, but you must [notify](#) the Executive Director of Heritage Victoria before you start the works or activities at least 20 business days before the works or activities are to commence.

Subdivision/consolidation: Permit exemptions exist for some subdivisions and consolidations. If the subdivision or consolidation is in accordance with a planning permit granted under Part 4 of the *Planning and Environment Act 1987* and the application for the planning permit was referred to the Executive Director of Heritage Victoria as a determining referral authority, a permit is not required.

Specific exemptions may also apply to your registered place or object. If applicable, these are listed below. Specific exemptions are tailored to the conservation and management needs of an individual registered place or object and set out works and activities that are exempt from the requirements of a permit. Specific exemptions prevail if they conflict with general exemptions.

Find out more about heritage permit exemptions [here](#).

Construction dates 1890,
Heritage Act Categories Registered place,
Hermes Number 1203
Property Number

Extent of Registration

AMENDMENT OF REGISTER OF HISTORIC BUILDINGS

Historic Building No. 866, Lime Burning Kiln, Princes Highway, Waurin Ponds.

(The Lime Burning Kiln, all remnant walls and land entered in the Register Book Certificate of Title Volume 9031 Folio 823 being part of Crown Allotments 5C, 6C and 7C as shown hatched on Plan A, endorsed by the Chairperson, Historic Buildings Council and held by the Director, Historic Buildings Council.)

[*Victoria Government Gazette* No. G14 17 April 1991 p.1008]

This place/object may be included in the Victorian Heritage Register pursuant to the Heritage Act 2017. Check the Victorian Heritage Database, selecting 'Heritage Victoria' as the place source.

For further details about Heritage Overlay places, contact the relevant local council or go to Planning Schemes Online <http://planningschemes.dpcd.vic.gov.au/>