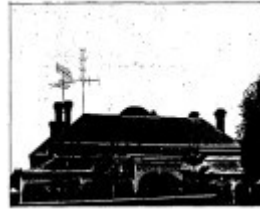


---

# Yarrowee Hall



Yarrowee Hall 1 Darling St -  
Ballarat Heritage Review,  
1998



Residence 1 Darling St -  
Ballarat Conservation Study,  
1978

---

## Location

1 DARLING STREET, REDAN - PROPERTY NUMBER 2007112, BALLARAT CITY

## Municipality

BALLARAT CITY

## Level of significance

Included in Heritage Overlay

## Victorian Heritage Register (VHR) Number

H1168

## Heritage Overlay Numbers

HO30

## Heritage Listing

Ballarat City

---

## Statement of Significance

Last updated on - February 29, 2024

**What is significant?**

**How is it significant?**

## Why is it significant?

*Ballarat Conservation Study, 1978*

No SoS provided in this citation. Please refer to images, descriptions, listings and loc govt in this place record for further information.

*Ballarat Heritage Review, 1998*

No SoS provided in this citation. Please refer to Attachments and History Sections in this place record for further information.

Heritage Study/Consultant	Ballarat - Ballarat Heritage Review, Andrew Ward, 1998; Ballarat - Ballarat Conservation Study, Jacobs Lewis Vines Architects, 1978;
Construction dates	1870,
Other Names	Miner Manager's Residence, House,
Hermes Number	120628
Property Number	

---

## Physical Description 1

This house is an imposing Victorian residence with return verandah trimmed with decorative cast iron. The entrance way, with coloured side-lights, unusual fan light and moulded doorway is marked by a distinctive raised section of the verandah. This separately roofed section of the verandah is similar to 309 Drummond Street but here is supported on slender vast iron columns, where Drummond Street displays the flat decorative cast iron columns characteristic to Ballarat.

The barrel vault portion of roofing seen behind the main roof line is also of interest.

*This place/object may be included in the Victorian Heritage Register pursuant to the Heritage Act 2017. Check the Victorian Heritage Database, selecting 'Heritage Victoria' as the place source.*

*For further details about Heritage Overlay places, contact the relevant local council or go to Planning Schemes Online <http://planningschemes.dpcd.vic.gov.au/>*