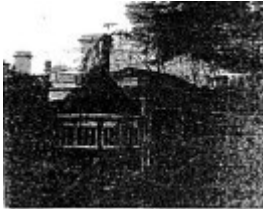

NETHERBY



Netherby, 606 Warrenheip Street, Buninyong - 1983
Buninyong Conservation Study



Netherby, 606 Warrenheip Street, Buninyong - 1983
Buninyong Conservation Study

Location

606 WARRENHEIP STREET, BUNINYONG - PROPERTY NUMBER 2034039, BALLARAT CITY

Municipality

BALLARAT CITY

Level of significance

Incl in HO area indiv sig

Heritage Overlay Numbers

HO181

Heritage Listing

Ballarat City

Statement of Significance

Last updated on - March 17, 2024

What is significant?

How is it significant?

Why is it significant?

Netherby is a highly significant residence in Buninyong and is prominently sited in one of the principal streets. The building was associated with early medical practitioners' in the town and is noted for its Regency detailing. Of

particular interest is the parapet facades timber verandah and the pyramid roofed conservatory. The garden remains substantially intact with remnants of early planting and gravel paving. A fence and timber gates enclose the dwelling, and a notable landscape feature is the mature Bunya Bunya Pine tree. Any internal alterations should be preceded by a detailed conservation analysis.

Heritage Study/Consultant	Ballarat - Buninyong Conservation Study, Colman Sutherland Conservation Consultants, 1983;
Construction dates	1873,
Other Names	House, Dr Sparling residence and surgery,
Hermes Number	123909
Property Number	

Physical Description 1

Netherby is a single-storey Victorian villa in the Regency style. It is asymmetrical in plan, with hipped iron roofs, and walls built of stone with a render finish with low parapets. There are tall timber sash windows and one three-side bay window to the main elevation, which has a panelled entry door with sidelights and highlights. Notable details include the finely detailed timber verandah with panels and brackets, and the unusual conservatory with a pyramid-shaped roof.

The stable block at the rear has rubble stone and weatherboard walls and loft space. The shingle roof appears to survive under the later iron.

The garden once contained remnants of early plantings and gravel paving. A mature Bunya Bunya pine that was once a feature of the garden died c.2010 and was removed. There is an early rubble stone wall along part of the side boundary.

This place/object may be included in the Victorian Heritage Register pursuant to the Heritage Act 2017. Check the Victorian Heritage Database, selecting 'Heritage Victoria' as the place source.

For further details about Heritage Overlay places, contact the relevant local council or go to Planning Schemes Online <http://planningschemes.dpcd.vic.gov.au/>