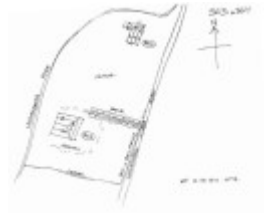

Farmhouse "Morven" including garden and driveway avenue of trees



Morven



Morven

Location

325 Lerderderg Gorge Road DARLEY, MOORABOOL SHIRE

Municipality

MOORABOOL SHIRE

Level of significance

Included in Heritage Overlay

Heritage Overlay Numbers

HO142

Heritage Listing

Moorabool Shire

Statement of Significance

Last updated on - June 1, 1995

What is significant?

The Farmhouse and its garden setting at 325 Lerderderg Gorge Road, Darley.

How is it significant?

The Farmhouse and its garden setting at 325 Lerderderg Gorge Road, Darley is of local historical and architectural significance to the Shire of Moorabool.

Why is it significant?

The Farmhouse and its garden setting at 325 Lerderderg Gorge Road, Darley is of local historical significance for its demonstration of the early settlement of Darley because of agriculture. The farmhouse and its garden are of historical significance for their illustration of the components of a Victorian farming complex established for a prosperous farmer from that period. The residence was constructed in 1896 for successful cattle breeder, James Kerr. Kerr achieved considerable success as a breeder of Dairy Shorthorn cattle and was a prominent resident of the area. The property is of historical significance for its associations with the Kerr family, as well as, the Bacchus Marsh Shire Engineer, D. A. Little who designed the residence.

The Farmhouse and its garden setting at 325 Lerderderg Gorge Road, Darley is of aesthetic significance as an excellent substantially intact example of a grand late Victorian farmhouse amongst its original garden. Features of note to the residence, include the return verandah with valance and cast iron posts with capitals, the pediment to the to the verandah, the tuck-pointed brickwork with Waurin Ponds stone and string courses and the chimneys with rendered corncicing. The remaining Victorian garden setting and the avenue driveway contribute to the aesthetic significance of the place.

1995

A late nineteenth century relatively intact farmhouse complex built in 1896 to the design of D. A. Little, Shire Engineer and located in a beautiful river valley setting. It has a rare Victorian garden layout and other contextual elements, including the driveway and cypress avenue, a windbreak and post and rail fence on the road boundary.

The complex is of local historical significance as an embodiment of a way of life, its social values and an agricultural practice. It has architectural significance locally as a representative intact surviving example of an Italianate farmhouse and its setting. The garden layout is individually significant at regional level as a rare relatively intact surviving late nineteenth century example.

Heritage Study/Consultant	Moorabool - Bacchus Marsh Heritage Study 1995, Richard Peterson and Daniel Catrice, 1995;
Architect/Designer	Little, DA,
Hermes Number	124328
Property Number	

Physical Description 1

A late nineteenth century substantial brick house overlooking the Lerderderg River. It has a hip-roof with a verandah in front. The four (visible) chimneys are rendered with Classical mouldings. There is a good length of three-rail post and rail fence on the road boundary.

Landscape.

The front garden to Morven has been laid out with the central path from the gate, broken with a circular lawn area edged with rocks, and two splay paths leading to the east and west of the house. The driveway along the north boundary and the west side of the house is lined with Peppercorn trees providing shade to the outlying farm buildings. To the south of the house there is a windbreak of heavily planted large trees which have some storm damage. The cottage garden to the front is in need of maintenance as many shrubs have been pruned to ground.

level, and shrubberies to the east are overgrown. Fencing around the garden is new steel mesh, and native species have been planted along the northern boundary, with the lawns left open. A rose garden is located on the east side of the house.

Plant species include:

Cupressus macrocarpa

Schinus molle

Pinus radiata

Cupressus sp.

Brachychiton populneus

Nerium oleander

Lagerstroemia indica

Eriobotrya japonica

Koelreuteria paniculata

Prunus hybrid

Fruit Trees

Punica granatum

Geranium sp.

Rosasp.

Acacia bai/eyana

Agapanthus orientalis

Monterey Cypress

Peppercorn Tree

Monterey Pine

Cypress

Kurrajong

Oleander

Crepe Myrtle

Loquat

Golden Rain Tree

Cherry Plum

Fruit Trees

Pomegranate

Geraniums

Roses

Cootamundra Wattle

Agapanthus.

Intactness

Not known

Historical Australian Themes

Agricultural

This place/object may be included in the Victorian Heritage Register pursuant to the Heritage Act 2017. Check the Victorian Heritage Database, selecting 'Heritage Victoria' as the place source.

For further details about Heritage Overlay places, contact the relevant local council or go to Planning Schemes Online <http://planningschemes.dpcd.vic.gov.au/>