

PURCELLS GENERAL STORE

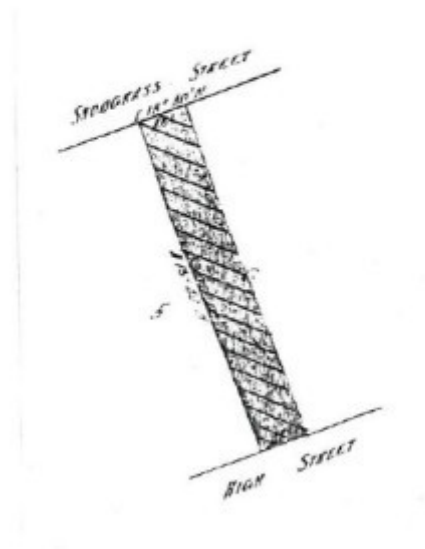


PURCELLS GENERAL STORE SOHE 2008



1 purcells general store high street yea front view apr1989

EXTENT OF DESIGNATION (SUMMARY)



H0740 H0740 plan

Location

20-22 HIGH STREET YEA, MURRINDINDI SHIRE

Municipality

MURRINDINDI SHIRE

Level of significance

Registered

Victorian Heritage Register (VHR) Number

H0740

Heritage Overlay Numbers

HO4

VHR Registration

December 13, 1989

Heritage Listing

Victorian Heritage Register

Statement of Significance

Last updated on - June 28, 1999

Purcell's General Store at 20 High Street, Yea was built in 1887. It is one of the oldest buildings still intact in Yea and was owned and operated by several generations of the Purcell family until 1986. ES Purcell had operated a general store in Yea from the 1860s and the family was prominent in the town. The store is a single-storeyed brick structure with a wide trussed gable roof concealed at the front by a rendered and decorated parapet with a raised central pediment. Two recessed entrances opened to separate departments, with groceries and hardware on one side and clothing, haberdashery and Manchester on the other side. A varnished and mirrored central partition divided the store centrally and an ornate balustrade surrounded a stairway to a large cellar. Many of the internal fixtures and fittings still exist and are in place, including shelving, bins and three large polished shop counters.

Purcell's General Store at 20 High Street, Yea is of architectural and historical importance for the following reasons:

- 1) as a rare, intact example of a traditional country-town general store;
- 2) because it retains many traditional fixtures and fittings dating from the store's inception in 1887, including three large counters, and providing much of the atmosphere and ambience of a traditional country town store;
- 3) as one of the oldest buildings still extant in Yea and;
- 4) for its association with the Purcell family, a prominent family in Yea since the 1860's, who owned and operated the store for nearly 100 years.

Permit Exemptions

General Exemptions:

General exemptions apply to all places and objects included in the Victorian Heritage Register (VHR). General exemptions have been designed to allow everyday activities, maintenance and changes to your property, which don't harm its cultural heritage significance, to proceed without the need to obtain approvals under the Heritage

Act 2017.

Places of worship: In some circumstances, you can alter a place of worship to accommodate religious practices without a permit, but you must [notify](#) the Executive Director of Heritage Victoria before you start the works or activities at least 20 business days before the works or activities are to commence.

Subdivision/consolidation: Permit exemptions exist for some subdivisions and consolidations. If the subdivision or consolidation is in accordance with a planning permit granted under Part 4 of the *Planning and Environment Act 1987* and the application for the planning permit was referred to the Executive Director of Heritage Victoria as a determining referral authority, a permit is not required.

Specific exemptions may also apply to your registered place or object. If applicable, these are listed below. Specific exemptions are tailored to the conservation and management needs of an individual registered place or object and set out works and activities that are exempt from the requirements of a permit. Specific exemptions prevail if they conflict with general exemptions.

Find out more about heritage permit exemptions [here](#).

Specific Exemptions:

CONDITIONS:

1. Exempt classes of works or activities are to be planned and carried out in a manner that prevents damage to the registered place / object. However, if other previously hidden original or inaccessible details of the object or place are uncovered, any works that may affect such items shall immediately cease. The Executive Director shall be notified of the details immediately to enable Heritage Victoria representatives to inspect and record the items, and for discussion to take place on the possible retention of the items, or the issue of a modified approval.
2. If there is a Conservation Policy and Plan approved by the Heritage Council or Executive Director, all works and activities shall be carried out in accordance with that Policy and Plan.
3. Nothing in this Declaration prevents the Executive Director from amending or rescinding all or any of the permit exempt alterations provided work has not commenced on the alteration.

THE ATTENTION OF THE OWNER AND/OR APPLICANT IS DRAWN TO THE NEED TO OBTAIN ALL OTHER RELEVANT PERMITS PRIOR TO THE COMMENCEMENT OF WORKS.

Construction dates 1887,
Heritage Act Categories Registered place,
Hermes Number 1260
Property Number

Extent of Registration

AMENDMENT OF REGISTER OF HISTORIC BUILDINGS

Historic Building No. 740.

Purcell's General Store, 20-22 High Street, Yea.

To the extent of: All of the buildings including interior fixtures and fittings, joinery, partitions, shelving, bins, cupboards, safe, stair rails and three polished timber counters within the General Store building and relating to its use as a General Store; and the land shown hatched which is included in the Register Book Certificate of Title

Volume 1156 Folio 070.

[Victoria Government Gazette No. G49 13 December 1989 p.3260]

This place/object may be included in the Victorian Heritage Register pursuant to the Heritage Act 2017. Check the Victorian Heritage Database, selecting 'Heritage Victoria' as the place source.

For further details about Heritage Overlay places, contact the relevant local council or go to Planning Schemes Online <http://planningschemes.dpcd.vic.gov.au/>