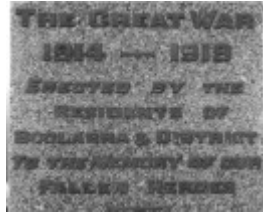


---

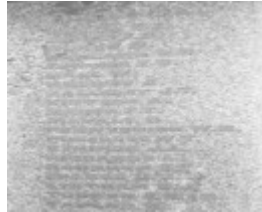
## Boolarra War Memorial Gates



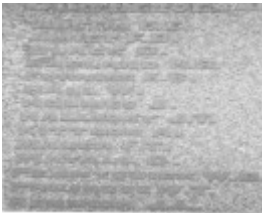
Bool 1.jpg



Bool 2.jpg



Bool 3.jpg



Bool 4.jpg



Bool 5.jpg

---

### Location

Boolarra, LATROBE SHIRE

### Municipality

LATROBE CITY

### Level of significance

-

### Heritage Listing

Vic. War Heritage Inventory

---

Construction dates 1924,

Hermes Number 126478

Property Number

---

## Physical Description 1

Two large pillars. WW1.

## Historical Australian Themes

Remembering the fallen

## Usage/Former Usage

Commemoration

## Veterans Description for Public

The Boolarra War Memorial Gates serve as the entranceway to a Memorial Park which opened in 1924. The gates consist of four granite pillars arranged symmetrically with two on either side of the driveway. All pillars are identical in design with a chamfered plinth and pyramid capital. The inner pillars are approximately 2.5m high and the outer pillars 1.5m. The larger inner pillars are inscribed with raised lead lettering that list twenty local enlistees on one and on the other: 'The Great War 1914-1918, erected by the residents of Boolarra and District in memory of our fallen heroes'.

Within the reserve itself are other mature exotic trees including Planes and Pines. Most of the buildings appear to date from the post-war period. There is what appears to be a former Nissen hut, which is a corrugated-iron clad building, semi-circular in shape. This building was added after 1975.

The decision to create a memorial park to honour the fallen was first discussed at the Boolarra Fallen Soldiers Memorial Fund meeting held on 28th November 1920. A suggestion was made by Mr P. Crutchfield that a piece of land suitable for recreation purposes be purchased and a fitting archway or entrance to the ground be erected. The matter was discussed further at a public meeting on 4th December 1920 where it was decided that a Memorial Park only, with some suitable form of commemoration to the fallen soldiers, be purchased. An executive committee was formed, which inspected and then reported about suitable sites. It was eventually decided to purchase land known as the race course, which was then owned by Mrs. Mulrooney.

Planning for and preparation of the reserve continued throughout the early 1920s while fund-raising was carried out. Once the reserve had been purchased a nine-member Committee of Management was appointed in 1921, which was charged with the task of selecting a design for a Memorial gateway to the park at a cost that was not to exceed 450. By June 1922, Mr Latter of the Committee was able to report that over 1,100 had been raised, and that 790 had been spent on the cost of acquiring the park reserve and carrying out improvements. However, Mr Latter regretted that the Memorial had not been erected at that time because of the difficulty in obtaining a suitable design. However, a design by Mr F. Hallett was subsequently accepted on 25th November, 1922 and he was requested to commence work as soon as possible. The estimated cost was £300.

The unveiling ceremony of the Boolarra Soldiers' Memorial took place on Friday 15th November, 1924. The memorial comprised the 'handsome memorial gates' comprising four grey granite posts and wrought iron gates at the entrance to the park, and the park itself including a 'good race course', football oval and turf wickets. Among those present were Messrs. Thomas Patterson M.H.R., W. West M.L.A., Cr. D.J. White (President of Morwell Shire) and Mr. George H. Wise (ex-assistant Minister of Defence). Mr Latter, speaking on behalf of the Committee, invited Mr Wise to unveil the gateway. In his address Mr Wise said that he trusted that the memorial would remind present and future generations of the great sacrifices that had been made and noble deeds accomplished by the men who had fallen for their country.

*This place/object may be included in the Victorian Heritage Register pursuant to the Heritage Act 2017. Check the Victorian Heritage Database, selecting 'Heritage Victoria' as the place source.*

*For further details about Heritage Overlay places, contact the relevant local council or go to Planning Schemes Online <http://planningschemes.dpcd.vic.gov.au/>*