

KINNEARS ROPEWORKS



KINNEARS ROPEWORKS
SOHE 2008



h02067 1 kinnears ropeworks
footscray from ballarat road js
2002



h02067 kinnears ropeworks
footscray ballarat road 0703
mz



h02067 kinnears ropeworks
footscray boiler house
external 0703 mz



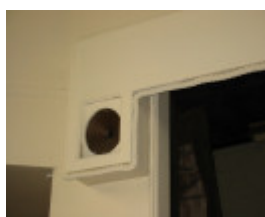
h02067 kinnears ropeworks
footscray rope walk 01 0703
mz



h02067 kinnears ropeworks
footscray rope walk 03 js
2002



h02067 kinnears ropeworks
footscray boiler house
chimney base 0703 mz



h02067 kinnears ropeworks
footscray mess room detail
0703 mz



h02067 kinnears ropeworks
footscray spooling room
hopper window 0703 mz



KINNEARS ROPEWORKS
October 2016



KINNEARS ROPEWORKS
October 2016



KINNEARS ROPEWORKS
October 2016



KINNEARS ROPEWORKS
October 2016



KINNEARS ROPEWORKS
October 2016



KINNEARS ROPEWORKS
October 2016



KINNEARS ROPEWORKS
October 2016



KINNEARS ROPEWORKS
October 2016



KINNEARS ROPEWORKS
October 2016



KINNEARS ROPEWORKS
October 2016



KINNEARS ROPEWORKS
October 2016



KINNEARS ROPEWORKS
October 2016



KINNEARS ROPEWORKS
October 2016



KINNEARS ROPEWORKS
October 2016



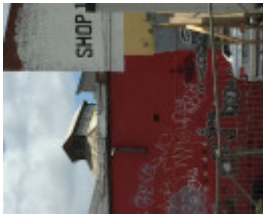
KINNEARS ROPEWORKS
October 2016



KINNEARS ROPEWORKS
October 2016



KINNEARS ROPEWORKS
October 2016



KINNEARS ROPEWORKS
October 2016



KINNEARS ROPEWORKS
October 2016



KINNEARS ROPEWORKS
October 2016



KINNEARS ROPEWORKS
October 2016



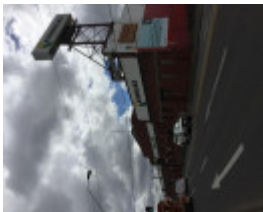
KINNEARS ROPEWORKS
October 2016



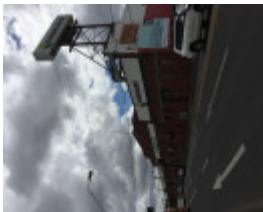
KINNEARS ROPEWORKS
October 2016



KINNEARS ROPEWORKS
October 2016



KINNEARS ROPEWORKS
October 2016



KINNEARS ROPEWORKS
October 2016



KINNEARS ROPEWORKS
October 2016



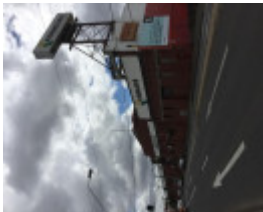
KINNEARS ROPEWORKS
October 2016



KINNEARS ROPEWORKS
October 2016



KINNEARS ROPEWORKS
October 2016



KINNEARS ROPEWORKS
October 2016



KINNEARS ROPEWORKS
October 2016



KINNEARS ROPEWORKS
October 2016



KINNEARS ROPEWORKS
October 2016



KINNEARS ROPEWORKS
October 2016



KINNEARS ROPEWORKS
October 2016



KINNEARS ROPEWORKS
October 2016



KINNEARS ROPEWORKS
October 2016



KINNEARS ROPEWORKS
October 2016



KINNEARS ROPEWORKS
October 2016



KINNEARS ROPEWORKS
October 2016



KINNEARS ROPEWORKS
October 2016



h02067 kinnears ropeworks footscray plan ammended 0105 mz

Location

124-188 BALLARAT ROAD FOOTSCRAY, MARIBYRNONG CITY

Municipality

Level of significance

Registered

Victorian Heritage Register (VHR) Number

H2067

Heritage Overlay Numbers

HO90

VHR Registration

March 3, 2005

Heritage Listing

Victorian Heritage Register

Statement of Significance

Last updated on - March 3, 2005

What is significant?

Kinnears Ropeworks, Footscray, is a large industrial complex of buildings built between 1909-1969. The buildings reflect the industrial processes of the site and include a number of manufacturing and storage buildings built in a rudimentary industrial manner of brick walls and saw tooth roofs. The earliest and most intact buildings are the service buildings that include the Engineers stores and workshops, Boiler house and chimney and the Spooling room which still displays its original brick paved floor. The internal workings and communications between the various facets of industry on the site are represented by the internal laneway system. The site also includes a particularly rare and fine example of a Rope Walk.

Kinnears Ropeworks was established by George Kinnear in Moonee Ponds in 1874. After he died two of his sons, Edward (Ted) Hore Kinnear and Henry (Harry) Humphrey Kinnear moved the works in 1903 to its present location on Ballarat Road in Footscray. The introduction of Federal tariff protection to the industry in 1902 is likely to have influenced this move. The new factory was badly damaged by fire in 1908 and was rebuilt in 1909. Ted Kinnear was the first footballer to play 100 games for Essendon and played in both the 1897 and the 1901 premierships.

For around one hundred years, Kinnears Ropeworks produced a large range of rope and twine products for a variety of domestic, commercial, agricultural, fishing, shipping, transport, textile, and other industrial purposes. They also manufactured carpet yarns and were leaders in the innovation of the production of synthetic yarns. Under manpower legislation during World War II, the factory produced a range of materials for military use, but also diversified into new products, such as camouflage netting and parachute cords. The factory struggled during the war due to the loss of essential personnel, and, as a result, employed a large number of women during this period.

Manufacturing in Victoria was reinvigorated with postwar immigration, but it was not until the 1970s that Kinnears was employing a significant number of non-British migrants, mainly from Italy, Greece, Macedonia and Turkey. In the post war period, the demarcation of space within the complex was emphasised by the assignment of different migrant groups to different tasks; this segregation was designed to avoid racial conflicts and also to enhance relations amongst workers within each division.

Kinnears expanded further in the early 1970s when it made significant inroads into the carpet industry.

The following buildings with associated equipment contribute to significance at the State level: B1, B2, B3, B4, B5, B6, B9, B10, B13 and B14, and the portions of B7, B8, B11 and B12 which abut the lanes. (see attached map) Multi-lingual signs throughout the site contribute to significance at the State level.

The following buildings with associated equipment contribute to significance at the local level: All items which contribute at State level, buildings B7, B8 and B11 along Ballarat Road for one structural bay in depth, and the sky sign at the south east corner.

How is it significant?

Kinnears Ropeworks, Footscray, is of, historical, social, scientific (technological) and architectural significance to the State of Victoria.

Why is it significant?

Kinnears Ropeworks is of historical significance as an important example of a rope-making factory in Victoria and was the largest and longest continually operating ropeworks in Victoria.

Kinnears Ropeworks is of historical significance for its contribution to the industrial landscape of Melbourne, in particular the western suburb of Footscray as a major industrial centre.

Kinnears Ropeworks is of historical and social significance because of its long and significant contribution to the development of a strong working-class culture in Melbourne, particularly the western suburbs and for its role in the history of post war migration to Victoria. The multi-lingual signs scattered throughout the site illustrate this role.

Kinnears Ropeworks is of scientific (technical) significance for its important and successful role in rope and textile manufacturing in Victoria during the early twentieth century. The large-scale production of ropes and cords in turn reflected the importance of shipping and haulage in Melbourne's industrial development. The development of Kinnears Ropeworks through the twentieth century reflects the continued importance of rope-making and related production processes. This was evident during World War II with the manufacture of camouflage netting, and during the post war period with the development of new rope-making technology, especially in the use of synthetics and carpet manufacture. . Equipment illustrating some processes survives on both levels at the western end of B9. The substantially intact rope-walk is a rare example of early twentieth century rope-making techniques and is indicative of the changing technologies of the site. At B3, the rails and early equipment associated with the manufacture of rope survive. B3 relies in part on the structure of adjoining and /or later buildings.

Kinnears Ropeworks, Footscray, is of architectural significance as an important example of a large industrial complex and is highly representative of early twentieth century industrial construction. The form of the roof structures assists in demonstrating the light requirements for the industrial activity below, and the spatial relationship of one building to another contributes to an understanding of the industrial site. The lanes between buildings also contribute to understanding of the site in use.

Permit Exemptions

General Exemptions:

General exemptions apply to all places and objects included in the Victorian Heritage Register (VHR). General exemptions have been designed to allow everyday activities, maintenance and changes to your property, which don't harm its cultural heritage significance, to proceed without the need to obtain approvals under the Heritage Act 2017.

Places of worship: In some circumstances, you can alter a place of worship to accommodate religious practices without a permit, but you must **notify** the Executive Director of Heritage Victoria before you start the works or activities at least 20 business days before the works or activities are to commence.

Subdivision/consolidation: Permit exemptions exist for some subdivisions and consolidations. If the subdivision or consolidation is in accordance with a planning permit granted under Part 4 of the *Planning and Environment Act 1987* and the application for the planning permit was referred to the Executive Director of Heritage Victoria as a determining referral authority, a permit is not required.

Specific exemptions may also apply to your registered place or object. If applicable, these are listed below. Specific exemptions are tailored to the conservation and management needs of an individual registered place or object and set out works and activities that are exempt from the requirements of a permit. Specific exemptions prevail if they conflict with general exemptions.

Find out more about heritage permit exemptions [here](#).

Specific Exemptions:

General Conditions: 1. All exempted alterations are to be planned and carried out in a manner which prevents damage to the fabric of the registered place or object. General Conditions: 2. Should it become apparent during further inspection or the carrying out of works that original or previously hidden or inaccessible details of the place or object are revealed which relate to the significance of the place or object, then the exemption covering such works shall cease and the Executive Director shall be notified as soon as possible. Note: All archaeological places have the potential to contain significant sub-surface artefacts and other remains. In most cases it will be necessary to obtain approval from Heritage Victoria before the undertaking any works that have a significant sub-surface component. General Conditions: 3. If there is a conservation policy and plan approved by the Executive Director, all works shall be in accordance with it. Note: The existence of a Conservation Management Plan or a Heritage Action Plan endorsed by Heritage Victoria provides guidance for the management of the heritage values associated with the site. It may not be necessary to obtain a heritage permit for certain works specified in the management plan. General Conditions: 4. Nothing in this declaration prevents the Executive Director from amending or rescinding all or any of the permit exemptions. General Conditions: 5. Nothing in this declaration exempts owners or their agents from the responsibility to seek relevant planning or building permits from the responsible authorities where applicable. **Regular Site Maintenance** : The following site maintenance works are permit exempt under section 66 of the Heritage Act 1995, a) regular site maintenance provided the works do not involve the removal or destruction of any significant above-ground features or sub-surface archaeological artefacts or deposits; b) the maintenance of an item to retain its conditions or operation without the removal of or damage to the existing fabric or the introduction of new materials; c) cleaning including the removal of surface deposits, organic growths, or graffiti by the use of low pressure water and natural detergents and mild brushing and scrubbing; d) repairs, conservation and maintenance to plaques, memorials, roads and paths, fences and gates and drainage and irrigation. e) the replacement of existing services such as cabling, plumbing, wiring and fire services that uses existing routes, conduits or voids, and does not involve damage to or the removal of significant fabric. Note: Surface patina which has developed on the fabric may be an important part of the item's significance and if so needs to be preserved during maintenance and cleaning. Note: Any new materials used for repair must not exacerbate the decay of existing fabric due to chemical incompatibility, obscure existing fabric or limit access to existing fabric for future maintenance. Repair must maximise protection and retention of fabric and include the conservation of existing details or elements. **Vermin Control**: The following vermin control activities are permit exempt under section 66 of the Heritage Act 1995, a) Vermin control activities provided the works do not involve the removal or destruction of any significant above-ground features or sub-surface archaeological artefacts or deposits; Note: Particular care must be taken with vermin control works where such activities may have a detrimental affect on the significant fabric of a place **Public Safety and Security**: The following public safety and security activities are permit exempt under section 66 of the Heritage Act 1995, a) public safety and security activities provided the works do not involve the removal or destruction of any significant above-ground structures or sub-surface archaeological artefacts or deposits; b) the erection of temporary security fencing, scaffolding, hoardings or surveillance systems to prevent unauthorised access or secure public safety which will not adversely affect significant fabric of the place including archaeological features; c) development including emergency stabilisation necessary to secure safety where a site feature has been irreparably damaged or destabilised and represents a safety risk to its users or the public. Note: Urgent or emergency site works are to be undertaken by an appropriately qualified specialist such as a structural engineer, or other heritage professional. **Signage and Site Interpretation**: The following Signage and Site Interpretation activities are permit exempt under section 66 of the Heritage Act 1995, a) signage and site interpretation activities provided the works do not involve the removal or destruction of any significant above-ground structures or sub-surface

archaeological artefacts or deposits; b) the erection of non-illuminated signage for the purpose of ensuring public safety or to assist in the interpretation of the heritage significance of the place or object and which will not adversely affect significant fabric including landscape or archaeological features of the place or obstruct significant views of and from heritage values or items; c) signage and site interpretation products must be located and be of a suitable size so as not to obscure or damage significant fabric of the place; d) signage and site interpretation products must be able to be later removed without causing damage to the significant fabric of the place; Note: The development of signage and site interpretation products must be consistent in the use of format, text, logos, themes and other display materials. Note: Where possible, the signage and interpretation material should be consistent with other schemes developed on similar or associated sites. It may be necessary to consult with land managers and other stakeholders concerning existing schemes and strategies for signage and site interpretation.

Minor Works: Note: Any Minor Works that in the opinion of the Executive Director will not adversely affect the heritage significance of the place may be exempt from the permit requirements of the Heritage Act. A person proposing to undertake minor works may submit a proposal to the Executive Director. If the Executive Director is satisfied that the proposed works will not adversely affect the heritage values of the site, the applicant may be exempted from the requirement to obtain a heritage permit. If an applicant is uncertain whether a heritage permit is required, it is recommended that the permits co-ordinator be contacted.

Construction dates	1909,
Heritage Act Categories	Registered place,
Other Names	KINNEAR'S, ROPE WORKS, ROPEWORKS,
Hermes Number	12649
Property Number	

History

Michael Donaghy is credited with making the first rope in Victoria in May 1852. Subsequently a number of open air ropewalks were established on the Yarra River at South Melbourne, Yarraville and especially at the port of Melbourne. Rope was essential for transport and haulage, and on the goldfields, which fostered rapid industrial development from the 1850s. These early ropewalks were possibly temporary affairs, operated only as the need arose. The 1860s however saw the establishment of the first permanent mechanised rope works.

George Kinnear arrived in the colony in 1864 and opened his rope works at Moonee Ponds ten years later. After his death in 1902, two of his sons, Edward Hore Kinnear and Henry (Harry) Humphrey Kinnear, built a new rope-making factory on a large site on Ballarat Road, Footscray, which opened in 1903. The introduction of Federal tariff protection to the industry in 1902 would have no doubt influenced this move. The new factory was badly damaged by fire in 1908 and was largely rebuilt.

Kinnears Ropeworks was a large employer of women during World War II when many male workers left to enlist. The factory was critical to providing access to greater opportunities for women in the paid workforce during this period.

In the 1970s, the site fostered strong ethnic identities amongst migrant communities; evidence of this aspect of the site's history can be seen in the remnant signage in multiple languages. The large mess hall /canteen is important for representing the strong community character of the workplace as well as the factory's provision of staff welfare. The rope motif to the mess room stage is notable for its light-hearted reference to the function of the site, but also as an indication of the pride in workmanship associated with rope-making.

Extent of Registration

1. All of the buildings and features marked as follows on Diagram 2067 held by the Executive Director:

B1 Polymer Store (Former Felt Room)

B2 Mill 2

B3 Rope Walk

B4 Finished Goods Warehouse

B5 Boiler House & Engineers Store

B6 Mill 1

B7 Mill 9 (Former Jute Mill Extension)

B8 Mill 6 (Former Jute Mill)

B9 Engineers Offices & Workshop and Spooling Room

B10 Office Building

B11 Mill 8 (Former Hemp Mill)

B12 Office Building

B13 Warehouse (Former No9 Store)

B14 Warehouse and Mess Room

2. All of the land (including any archaeological remains) marked L1 on Diagram 2067 held by the Executive Director.

This place/object may be included in the Victorian Heritage Register pursuant to the Heritage Act 2017. Check the Victorian Heritage Database, selecting 'Heritage Victoria' as the place source.

For further details about Heritage Overlay places, contact the relevant local council or go to Planning Schemes Online <http://planningschemes.dpcd.vic.gov.au/>