

# Ringwood Memorial Clock Tower



Ringwood Memorial Clock Tower.jpg



Ringw 1.jpg



Ringw 2.jpg



Ringw 3.jpg



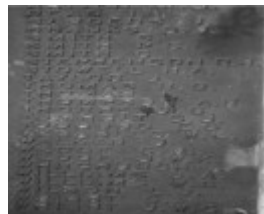
Ringw 4.jpg



Ringw 5.jpg



Ringw 6.jpg



Ringw 7.jpg



Ringw 8.jpg



Ringw 9.jpg

## Location

Corner Maroondah Highway and Warrandyte Road, Ringwood, MAROONDAH CITY

## Municipality

## Level of significance

-

## Heritage Overlay Numbers

HO40

## Heritage Listing

Vic. War Heritage Inventory

---

## Statement of Significance

Last updated on - March 12, 2004

HO40 Ringwood Memorial Clocktower Corner Maroondah Highway & Warrandyte Road, Ringwood

A memorial clocktower to those who served or were killed in the Great War, 1914-18. It was built in 1928. In 1967, it was taken down and re-erected here from another site. It has historical significance to Maroondah for its association with the response of the community to Australian government action in the declaration of war and subsequent sacrifice of time and lives of the military forces. It is a focus of the sentiment of Australian's maturity as a nation on the world stage. It is architecturally significant as and an extraordinary example of its architectural style and as an unusual war memorial type. It is socially significant as known and valued by the community as a landmark used by the community for orientation and as an iconic symbol of Ringwood illustrated on representative views.

Construction dates 1927,

Hermes Number 126995

Property Number

---

## Physical Description 1

A three stage abstracted Baroque freestanding tower, finished in cement render. The ground level is ashlar, the courses deeply recessed, with buttresses at the angles are each face. Supporting an open pediment, with a cornice mould and acroteria at ridge and angles on abstracted cyma-recta brackets. Below the pediment is a recessed, arched panel with a Mannerist keystone and indented angles. This has three bronze plaques, a wreath, an inscription to "the fallen in both the Great War (1914-1918) and the World War (1939-1945)", manufactured by C.G. Roeszler, Melbourne. All is supported on a granite base over a slate platform approached with three steps. The second stage is plain, with courses embossed and a single slot window. The third stage at centre has an (accessible) balcony on triple cyma-recta brackets. There are a pair of St Andrew's Cross panels below studded strip panels. These return around the angles on plain brackets. Over are Ionic pilasters flanking a Modernist circular clockface, supporting a corbelled impost, a further open pediment and keystone. Over again is a parapet between panels at the angles, surmounted by a copper dome and finial. At the rear is an access door with a flat architrave.

## Physical Conditions

Demolished and reconstructed on a different site. Significant intact elements: Materials: slate. Form, facade, roof form, wall decoration, unpainted finish, nine memorial plaques, four clocks, bell and striker.

## **Usage/Former Usage**

Memorial clock tower

## **Veterans Description for Public**

The Ringwood Memorial Clock Tower, completed in 1928, and was originally located in the centre of the Maroondah Highway, where it intersects with Bedford and Warrandyte Roads, Ringwood. The tower was constructed as a memorial to those who were killed and those who served during the Great War, and was erected as a result of public subscriptions and a grant of £500 from the Ringwood Borough Council, in 1924. A 660mm bell and striker were installed in the tower in June 1934, and further plaques were added to the tower's base to honour those who served in the Second World War, Malaya, Korea and Vietnam. By the 1960s, concern was being expressed by the council and the C.R.B. (VicRoads), about the tower causing traffic congestion if it remained in the middle of the highway. After opposition from the local community about the tower's removal, in 1967 the tower was removed and re-erected on the corner of Maroondah Highway and Wantirna Road, formerly the site of the Ringwood Cool Store.

The clock is a three stage abstracted Baroque freestanding tower, finished in cement render. The pediment is a recessed, arched panel with a Mannerist keystone and indented angles. There are three bronze plaques, a wreath, an inscription to "the fallen in both the Great War (1914-1918) and the Second World War (1939-1945)", manufactured by C.G. Roeszler, Melbourne. There are a pair of St Andrew's Cross panels below studded strip panels. The clockface itself is a Modernist circular design.

*This place/object may be included in the Victorian Heritage Register pursuant to the Heritage Act 2017. Check the Victorian Heritage Database, selecting 'Heritage Victoria' as the place source.*

*For further details about Heritage Overlay places, contact the relevant local council or go to Planning Schemes Online <http://planningschemes.dpcd.vic.gov.au/>*