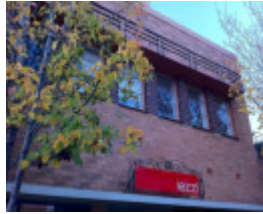

FLATS, SHOPS AND OFFICES



921-923 High Street,
Armadale (2).jpeg



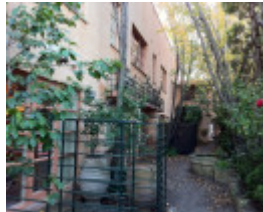
921-923 High Street,
Armadale



Flats & shops, 921 High
Street



Flats & shops, 921 High
Street



IMG_0908.jpeg

Location

921-923 High Street ARMADALE, STONNINGTON CITY

Municipality

STONNINGTON CITY

Level of significance

Incl in HO area indiv sig

Heritage Overlay Numbers

HO400

Heritage Listing

Stonnington City

Statement of Significance

Last updated on -

This place was reviewed by *Residential Flats Study Stage 2* (Context, 2011) and is recommended for detailed assessment in Stage 3. It is of potential significance:

As a good example of the Moderne style

As a design by Seabrook & Fildes

As an example of the Combined Function type

Heritage Study/Consultant	Stonnington - City of Stonnington Heritage Overlay Gap Study - Heritage Overlay Precincts Final Report, Bryce Raworth P/L, 2009; Stonnington - Residential Flats in Stonnington - Heritage Citations Project, Context P/L, 2013;
Construction dates	1938,
Architect/Designer	Seabrook & Fildes,
Other Names	Combined function flats,
Hermes Number	139386
Property Number	

Physical Description 1

Double-storey interwar offices/flats.

This place/object may be included in the Victorian Heritage Register pursuant to the Heritage Act 2017. Check the Victorian Heritage Database, selecting 'Heritage Victoria' as the place source.

For further details about Heritage Overlay places, contact the relevant local council or go to Planning Schemes Online <http://planningschemes.dpcd.vic.gov.au/>