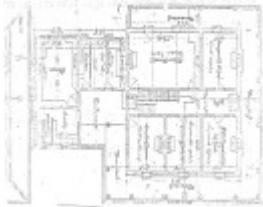
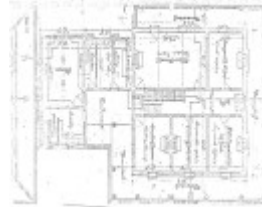

BALLARAT POLICE STATION (FORMER)



Ballarat Police Station -
Ballarat Conservation Study,
1978



Ballarat Police Station02 -
Ballarat Conservation Study,
1978



Ballarat Police Station -
Ballarat Heritage Review,
1998

Location

15 AND 17 CAMP STREET, BALLARAT CENTRAL - PROPERTY NUMBERS 2004397, 2004400, BALLARAT CITY

Municipality

BALLARAT CITY

Level of significance

Incl in HO area indiv sig

Victorian Heritage Register (VHR) Number

H1544

Heritage Overlay Numbers

HO17

Heritage Listing

Ballarat City

Statement of Significance

Last updated on - March 3, 2024

What is significant?

How is it significant?

Why is it significant?

Ballarat Conservation Study, 1978

Part of Recommended Area A1.1.

No SoS provided in this citation. Please refer to descriptions, history, construction, loc govt, listings and images sections in this place record for further information.

Ballarat Heritage Review, 1998

No SoS provided in this citation. Please refer to history and images sections in this place record for further information.

Heritage Study/Consultant	Ballarat - Ballarat Heritage Precincts Study, Dr David Rowe and Wendy Jacobs, 2006;
Construction dates	1884, 1889, 1906, 1929,
Architect/Designer	Public Works Department,
Other Names	Old Ballarat Police Station,
Hermes Number	178144
Property Number	

Physical Description 1

(note: a portion of this text is missing)

.....was constructed as a police station in 1884-86. It was built by the Public Works Department design by Lewis and & Robers, Contractors for.....is typical of two storey stations constructed at this time.....the port melbourne station which also has a hip roofed verandah.columns, the cast iron balustrading, and the high bluestone.....are extremely unusual. The paired upper floor central windows.....The later wing (date unknown) detracts from the symmetry.....but is sufficiently compatible.

The building is substantially intact with face brickwork and stonework,ys and intact verandah elements. The raised verandah on aplinth and use of iron decorative work is unique to this typeThe building is in good condition and provides an important streetscape element. Situated on the bend in Camp Street,..... vista from Mair Street and provides a strong focal point of...

Intactness

SUBSTANTIALLY INTACT

This place/object may be included in the Victorian Heritage Register pursuant to the Heritage Act 2017. Check the Victorian Heritage Database, selecting 'Heritage Victoria' as the place source.

For further details about Heritage Overlay places, contact the relevant local council or go to Planning Schemes Online <http://planningschemes.dpcd.vic.gov.au/>