

SYDENHAM STREET



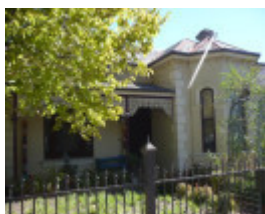
Sydenham St 1-9.JPG



Sydenham Street precinct



Sydenham Street precinct



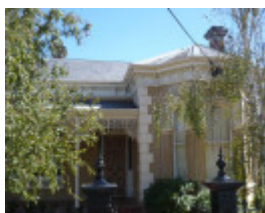
Sydenham Street precinct



Sydenham Street precinct



Sydenham Street precinct



Sydenham Street precinct

Location

1-9 SYDENHAM STREET, MOONEE PONDS, MOONEE VALLEY CITY

Municipality

MOONEE VALLEY CITY

Level of significance

Included in Heritage Overlay

Heritage Overlay Numbers

HO467

Heritage Listing

Moonee Valley City

Statement of Significance

Last updated on - November 28, 2013

What is significant?

The Victorian Italianate villas, constructed c.1884 to c.1888, at 1-9 Sydenham Street, Moonee Ponds are Contributory. The overall consistency of housing form (single storey, asymmetrical plan with hipped roofs and separate verandahs), materials and detailing (rendered walls with boom style cast cement detailing, slate roofs, cast iron verandahs with tiled floors, paneled front doors with sidelights and toplights, brick and render or rendered chimneys with cornices) and detached siting with consistent front and side setbacks contributes to the significance of the precinct.

Non-original alterations and additions to the houses, and all fencing is not significant.

How it is significant?

The houses at 1-9 Sydenham Street, Moonee Ponds are of local historic and aesthetic significance to the City of Moonee Valley.

Why is it significant?

Historically, the houses are associated with the intense period of residential development that occurred during the land boom within Moonee Ponds in the area surrounding the railway station. They are representative of the speculative housing built to similar or standard designs for investors. (Criteria A & D)

The houses have aesthetic significance as a distinctive group of Italianate villas with similar form and detailing including the ornate facades that are enriched by moulded cement architraves and sills to the bay windows (nos. 1-5 & 9 have vermiculated keystones and impost moulds, while the separate tripartite windows to no.7 have stop chamfered reveals, with typical details such as bracketed eaves and stringcourses and less common features such as the decorative quoining to the wall corners and the incised panels between the bay windows and to the frieze beneath the eaves to nos. 1-5 (no.7 has a plain frieze, while no.9 features paired brackets rosettes and vermiculated panels). (Criterion E)

Theme

6. Building towns cities and the garden state

Heritage Study/Consultant	Moonee Valley - City of Moonee Valley Stage 1 Heritage Gap Study, Context PL, 2013;
Construction dates	1885,
Other Names	PRECINCT,
Hermes Number	196327
Property Number	

Physical Description 1

This small residential precinct comprises five Victorian era Italianate villas. All are asymmetrical in plan, four with canted bays and one flat, and are constructed of brick with rendered (ruled to resemble Ashlar blocks) facades that are enriched by moulded cement architraves and sills to the bay windows (nos. 1-5 & 9 have vermiculated keystones and impost moulds, while the separate tripartite windows to no.7 have stop chamfered reveals, with typical details such as bracketed eaves and stringcourses and less common features such as the decorative quoining to the wall corners and the incised panels between the bay windows and to the frieze beneath the eaves to nos. 1-5 (no.7 has a plain frieze, while no.9 features paired brackets rosettes and vermiculated panels). The original six-panel doors have sidelights and highlights. Windows are double hung timber sash with the tripartite windows beneath the verandahs to nos. 1-5 & 9 having barley twist colonettes. Chimneys are of brick with rendered bases and tops with cornices or fully rendered (7, 9). It appears nos. 1-5 were originally identical, while no.9 is very similar but has different details and chimneys.

Overall the integrity of the houses is relatively good. The slate roof to no.1 has been replaced and the verandah reconstructed with an inappropriate bullnose profile. The other verandahs appear to be sympathetic reconstructions or may be original in part to nos 3, 5 & 7 (marks on the side wall of no.9 beside the verandah indicate it originally had an ogee profile). No. 5 has an elegant slightly concave profile, dentillated fascia, fluted columns with a Corinthian capital and a delicate cast iron frieze, while at no.7 the frieze is encased within a timber frame and there are cast iron brackets.

This place/object may be included in the Victorian Heritage Register pursuant to the Heritage Act 2017. Check the Victorian Heritage Database, selecting 'Heritage Victoria' as the place source.

For further details about Heritage Overlay places, contact the relevant local council or go to Planning Schemes Online <http://planningschemes.dpcd.vic.gov.au/>