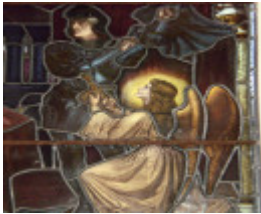


---

# Stained Glass Window at Myrtleford Uniting [former Methodist] Church



Mytleford Methodist

---

## Location

Corner Myrtle and Albert Streets, Myrtleford, ALPINE SHIRE

## Municipality

ALPINE SHIRE

## Level of significance

-

## Heritage Listing

Vic. War Heritage Inventory

---

Heritage Study/Consultant	Vic War Heritage Inventory - Stained Glass Memorial Windows Study, Bronwyn Hughes, 2013;
Architect/Designer	Brooks, Robinson & Co,
Hermes Number	196645
Property Number	

---

## Memorial Window References & Acknowledgements

AWM Roll of Honour; AWM photographs PO5998.005; P05998.006; NAA: B2455, Matthews James Edward; NAA: B2455, Willoughby Thomas; Auckland War Museum Cenotaph Database; *Ovens and Murray Advertiser*, 5 September 1917, p.2.

With thanks for local assistance: Lorna and Geoff Williamson and Ray and Isabel Dunstan.

## Memorial Window Subject

Sword of the Faithful

## Memorial Window Text

Scio enim quod Redemptor meus vivit [I know that my Redeemer liveth-...]

## Memorial Window Inscription

In loving memory of four cousins who gave their lives for God King & Country in the Great War 1914-18 Tom Willoughby, Anzac, died Gallipoli, 31st May 1915 20 years 4 months. William Willoughby, NZ Rifles, died France, 31st March 1917 32 years. James E. Matthews AIF, killed Pozieres, France, July 19th 1916 18 years 6 months. George Matthews, N.Z. Rifles, killed France, 1st October 1916 25 years 8 months. Greater love hath no man than this that a man lay down his life for his friends

## Memorial Window Description & History

The window was almost certainly made by Brooks, Robinson & Co., and was probably designed by William Wheildon (1873-1941). Originally the window was lancet-shaped but was cut down to a rectangle when removed from the old to the new church in the 1960s. Remnants of the architectural canopy and shortened base can be seen in the extant window. The subject was an appropriate commemoration for young men killed in the name of God, King and country; the same cartoon was used as the basis for a tribute to Corporal Burton, VC, at St. Andrew's Presbyterian Church, Euroa in 1924, and again in 1946 for a Second World War memorial in the Methodist church at Bairnsdale.

In the true spirit of Anzac, this window records the loss of four cousins, two of whom served with the Australian forces and two with the New Zealand Rifles and all of whom had close family ties with the Willoughby and Matthews families in Myrtleford. Thomas Willoughby, a Private in 1 Battalion, was injured at Gallipoli and evacuated to a hospital ship where he died of wounds on 21 May 1915. Private James Edward Matthews, son of Richard and Jane Matthews of Myrtleford, died in the Fromelles battle on 19 July 1916, although initially he was reported missing. He is buried at VC Corner, Australian Cemetery Memorial, Fromelles. Rifleman William Willoughby, son of JC Willoughby of Myrtleford joined the 1st Battalion, NZ Rifles after enlisting at Otago, NZ. He died of wounds and is buried at Trois Abres Cemetery, Steenwerck, Nord, France. He is among those honoured on the Bluff War Memorial, Otago, NZ. Private George Matthews, son of Mary Matthews, Eurobin, (near Myrtleford), was serving in the Otago Infantry Regiment when he was killed in action in the Somme on 1 October 1916.

*This place/object may be included in the Victorian Heritage Register pursuant to the Heritage Act 2017. Check the Victorian Heritage Database, selecting 'Heritage Victoria' as the place source.*

For further details about Heritage Overlay places, contact the relevant local council or go to Planning Schemes Online <http://planningschemes.dpcd.vic.gov.au/>