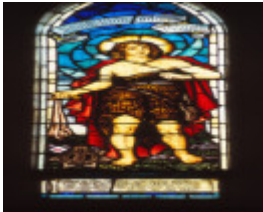
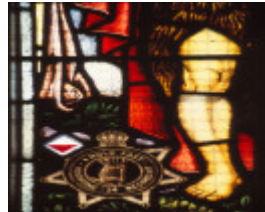


---

# Stained Glass Window at Hawthorn St. Columb's Anglican Church



Hawthorn St Columbs  
Anglican David BR& Co.  
1952-3



Hawthorn St Columbs  
Anglican David BR& Co  
1952-52 detail

---

## Location

St. Columb's Street, Hawthorn, BOROONDARA CITY

## Municipality

BOROONDARA CITY

## Level of significance

-

## Heritage Listing

Vic. War Heritage Inventory

---

Heritage  
Study/Consultant

Vic War Heritage Inventory - Stained Glass Memorial Windows Study, Bronwyn  
Hughes, 2013;

Architect/Designer

Kerr-Morgan, William, Brooks, Robinson & Co,

Hermes Number

196877

Property Number

---

## Memorial Window References & Acknowledgements

AWM Roll of Honour; NAA: B883, VX104168; *Argus*, 15 August 1946, p.15.

## Memorial Window Subject

David

## Memorial Window Text

David, King and Prophet

## Memorial Window Inscription

Sacred to the memory of my son Lieut. Alan Philip Saunders 24th Batt'n 2nd A.I.F. Killed in New Guinea 10th August 1943

## Memorial Window Description & History

The image of *David*, displayed with only a sling shot as weapon, represented the struggles faced by Australian troops in New Guinea. The battalion colours (white triangle above a red triangle) and badge (Hold Fast Kooyong 24 Regiment) were inserted into the base of the subject panel, above the inscription. Saunders father, Philip Saunders ordered two matching windows in November 1952: *Jonathan*, was erected to the memory of Alan Saunders' mother, who died in that year. Each window measured 61 1/4 x 18 1/2 inches.

Lieutenant Alan Philip Saunders was born 20 July 1919, the only child of Philip and Daphne Saunders. He enlisted in the field and joined 24 Battalion in the defence of New Guinea. He was killed in action at Buang River mouth on 15 August 1943 and remembered on the Lae War Cemetery, Papua New Guinea..

*This place/object may be included in the Victorian Heritage Register pursuant to the Heritage Act 2017. Check the Victorian Heritage Database, selecting 'Heritage Victoria' as the place source.*

*For further details about Heritage Overlay places, contact the relevant local council or go to Planning Schemes Online <http://planningschemes.dpcd.vic.gov.au/>*