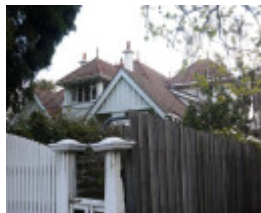

DANBY



35 Rockley Road South Yarra



35 Rockley Road South Yarra



35 Rockley Road South Yarra



35 Rockley Road South Yarra
- front fence and cypress row
to front boundary

Location

35 Rockley Road SOUTH YARRA, STONNINGTON CITY

Municipality

STONNINGTON CITY

Level of significance

Included in Heritage Overlay

Heritage Overlay Numbers

HO626

Heritage Listing

Stonnington City

Statement of Significance

Last updated on - January 1, 1900

What is significant?

The Federation house known as 'Danby', 35 Rockley Road, South Yarra, a two-storey dwelling built in 1910-11 for clothing manufacturer and retailer, Henry Buck.

Elements that contribute to the significance of the place include (but are not limited to):

- . The house's original external form, materials and detailing
- . The house's high level of integrity to its original design
- . The original front fence
- . The front cypress hedge.

The 1960s additions at the rear are not significant.

How is it significant?

'Danby', 35 Rockley Road, South Yarra is of local architectural, aesthetic and historical significance to the City of Stonnington.

Why is it significant?

'Danby', 35 Rockley Road, South Yarra is a fine and representative example of a Federation house. It displays typical features of the Federation Arts and Crafts architectural style popular in the first decade of the twentieth century in South Yarra and across Melbourne more broadly, including a simple symmetrical form with subtle asymmetrical elements, unadorned and tapered chimneys, exposed timber rafter ends and timber brackets, and the use of contrasting materials such as red brick and roughcast render. The use of quality materials and elaborate detailing imparts a sense of grandeur and demonstrates the status of the owner in wealthy established areas such as South Yarra in the early twentieth century (Criterion D).

'Danby', 35 Rockley Road, South Yarra is a well-considered and carefully detailed example of what can broadly be defined as a Federation Arts and Crafts house. The overall appearance of symmetry, with large central entrance archway, projecting hipped dormer and chimneys, subtle asymmetry of the flanking projecting gabled bays, bay windows, decorative timberwork and coloured and leadlight glass, demonstrate a rich use of architectural elements and materials which together present a picturesque composition of this architectural style. The original timber front fence, with Art Nouveau-inspired detailing and recessed entrance, along with the mature cypress row, contributes to the picturesque character of the place (Criterion E).

'Danby', 35 Rockley Road, South Yarra has strong associations with Henry Buck, the original owner of the house. Buck became well known in the clothing manufacture and retail industry in Melbourne and the business, Henry Buck's Menswear, continues to operate in 2017. Buck belonged to many associations, supported many charitable institutions and received an O.B.E. in 1920 for services to the community and business (Criterion H).

'Danby', 35 Rockley Road, South Yarra has strong associations with H W & F B Tompkins, prominent Melbourne architects in the early twentieth century. Best known for their commercial work such as the Myer Emporium and Dimmey's store, 'Danby' is a clear and competent illustration of the firm's high quality design. It is one of a small number of residential buildings that can be attributed to these well-known Australian architects (Criterion H).

Heritage Study/Consultant	Stonnington - City of Stonnington Federation Houses Study, GJM Heritage Pty Ltd, 2017;
Construction dates	1910,

Architect/Designer	Tompkins, HW & FB,
Other Names	35 Rockley Road,
Hermes Number	201761
Property Number	

Physical Description 1

**Note: There is limited visibility of the property from the public realm. The following description is based on what is visible from the public realm, from historical and other documentation, and in aerial photographs.*

The dwelling at 35 Rockley Road is a substantial two-storey dwelling set back from the street within a large, mature garden. The dwelling is an architecturally well designed example of the Federation Arts & Crafts style by H.W & F.B Tompkins. The dwelling, constructed in 1910-11 appears to be in fair condition.

The dwelling has a square plan form with a Marseille tiled, hipped roof with several large gables and windows at first floor level (Figure 4). The roof has some remnant ornate terracotta ridge tiles and ball finials. Visible chimneys are tall and slender, with rendered stacks, simple rendered capping (both overpainted) and single terracotta chimney pots (Figure 4). The walls are constructed in tuck-pointed, red brick to the rendered (overpainted) stringcourse, and rendered in roughcast (overpainted) above with moulded head stops to the bow window. A pair of flying gables dominate the east elevation, supported on ornate timber brackets and with roughcast render (overpainted) and vertical timber strapping gable ends (Figure 4). The roughcast continues down to form the projecting bow windows, both with square pane leaded casements and stained glass highlights (Figure 5). The southern gable end also features a flat window awning and lattice vents to the gable end (Figure 5). At first floor level, a former sleepout with hipped roof and exposed rafter tails nests between the two flanking gable ends (Figure 4). The sleepout is supported by squat, square columns at the corners and has been enclosed by four timber casement windows. The sill forms an undulating Art Nouveau shape finished in roughcast render. The southern elevation features a verandah with square timber columns on brick plinths, timber balustrade, encaustic tiled floor with bluestone edging and Marseille tile roof. The front entrance (eastern elevation) is recessed within a dominant horseshoe archway, decorated with bullnose terracotta insets and a rendered (overpainted) stringcourse (Figure 6). The porch floor is encaustic tile with bluestone edging. The front door is a timber three panel door with stained glass top panel, stained glass half sidelights and fanlight over set within an ornate arched frame with dentilated lintel (Figure 6).

The Rockley Road boundary features an original picket fence with Art Nouveau detailing and central gate (Figures 7 and 8). A row of mature cypress trees, which appear to be in fair condition, are located behind the fence, reducing visibility of the dwelling (Figure 7). The property has vehicular access on the northern boundary and there is a large tennis court to the rear. The front gardens contain a variety of mature trees and planting. To the rear of the property is a small conservatory extension, constructed in 1963. Additions have also been made to the property, including at least two attic storey additions on the north and south.

Integrity

The house retains a high degree of integrity to the Federation Arts and Craft style, in fabric, form and detail. While the house has undergone some alterations and additions, these do not diminish the ability to understand and appreciate the place as a fine example of a Federation house.

This place/object may be included in the Victorian Heritage Register pursuant to the Heritage Act 2017. Check the Victorian Heritage Database, selecting 'Heritage Victoria' as the place source.

For further details about Heritage Overlay places, contact the relevant local council or go to Planning Schemes Online <http://planningschemes.dpcd.vic.gov.au/>