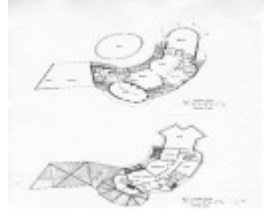


---

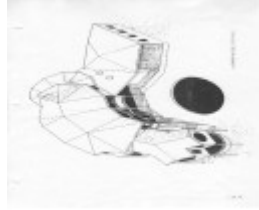
# ROSS AND MONICA LARMER HOUSE



22494 Ross and Monica Larmer House - 42 Berrima Road, Donvale



22494 Floor Plans Ross and Monica Larmer House - 42 Berrima Road, Donvale



22494 Elevation of Ross and Monica Larmer House - 42 Berrima Road, Donvale

---

## Location

42 Berrima Road DONVALE, Manningham City

## Municipality

MANNINGHAM CITY

## Level of significance

Included in Heritage Overlay

## Heritage Overlay Numbers

HO14

## Heritage Listing

Manningham City

---

## Statement of Significance

Last updated on -

Of regional significance as an important work by Burgess, characteristic of his virtually unique, organic approach to design. A contribution to the development of a uniquely regional architecture for Victoria.

Heritage Study/Consultant Manningham - Manningham Heritage Study Review, Context Pty Ltd, 2006;  
Other Names formerly Lot 1, Flora Road,  
Hermes Number 22494  
Property Number

---

## Historical Australian Themes

Local Themes

8.02 - Architects

## Physical Description 1

A two-storey timber house, set well back on a native bushland site, overlooking Mullum Mullum Creek. A characteristically organic plan entirely shunning geometry, with rooms of extraordinary shapes, including many curved walls. The overall shape is a curve, embracing the north sun, culminating in the Y-shaped study over the D-shaped billiards room: an extraordinary invention. Construction is otherwise conventional, with hip corrugated steel roofs, over cedar weatherboards, and the use of large circular windows. The bushland garden is fastidiously cared for.

It is comparable with other Burgess houses such as 58 Berrima Road (194.30), the Morrie Shaw house at Cottlesbridge and 37-39 & 41-43 Curry Road, by Robinson Chen (195.16 & 195.17) and also earlier houses by Kevin Borland.

## Physical Conditions

**Condition** Excellent

## Integrity

**Integrity** Intact

*This place/object may be included in the Victorian Heritage Register pursuant to the Heritage Act 2017. Check the Victorian Heritage Database, selecting 'Heritage Victoria' as the place source.*

*For further details about Heritage Overlay places, contact the relevant local council or go to Planning Schemes Online <http://planningschemes.dpcd.vic.gov.au/>*