
HOUSE



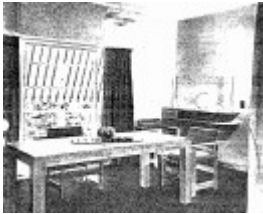
2 Riverview Road.JPG



Essendon Conservation
Study 1985



Essendon Conservation
Study 1985



Essendon Conservation
Study 1985

Location

2 RIVERVIEW ROAD,, ESSENDON VIC 3040 - Property No 192651

Municipality

MOONEE VALLEY CITY

Level of significance

Included in Heritage Overlay

Heritage Overlay Numbers

HO108

Heritage Listing

Moonee Valley City

Statement of Significance

Last updated on -

Architecturally, perhaps among the most successful of the local adaptations of European Modern, in original condition, and achieved by a renowned architectural firm: of State importance.

Historically, little is known of Evan Price

Heritage Study/Consultant Moonee Valley - Essendon Conservation Study, Graeme Butler, 1985;

Construction dates 1935,

Architect/Designer Mewton & Grounds,

Hermes Number 24093

Property Number

Physical Description 1

One and two levels of interconnected geometric forms built in clinker cream brickwork, with metal corner and strip windows, a flat concrete porch roof and open roof- top terrace, are all elements of the European modern style. The house is generally original except for 'crazy paving' garden beds and a sun blind.

The house forms part of the Leslie Road precinct. The set-back and detached form are the only similarities with what is a diverse streetscape.

The house compares to the house at 6 Peterleigh Street, Essendon (refer to separate Hermes record). Here in contrast the forms are more successfully integrated with each other and the functions they house.

This place/object may be included in the Victorian Heritage Register pursuant to the Heritage Act 2017. Check the Victorian Heritage Database, selecting 'Heritage Victoria' as the place source.

For further details about Heritage Overlay places, contact the relevant local council or go to Planning Schemes Online <http://planningschemes.dpcd.vic.gov.au/>