

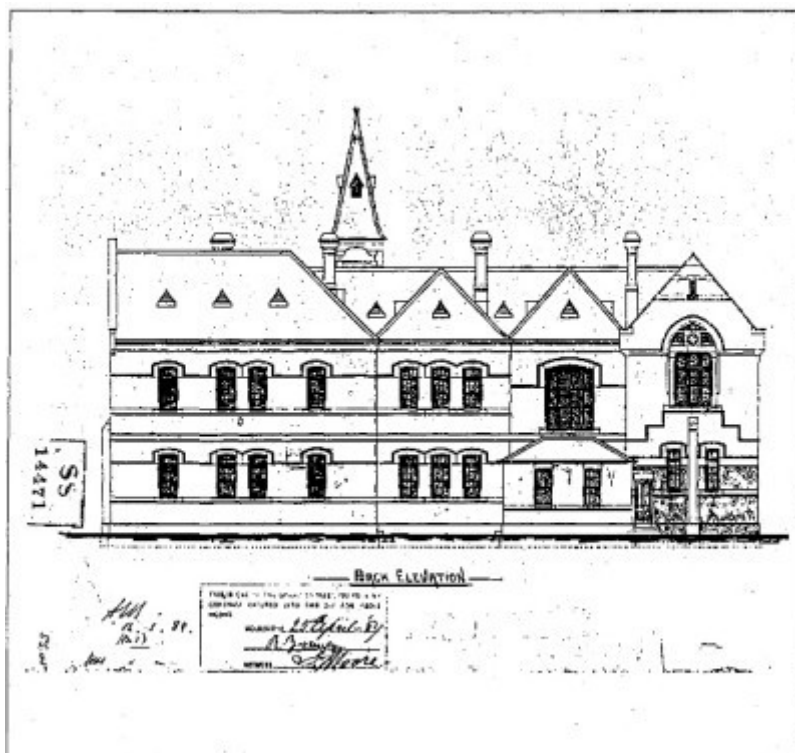
Yarraville Primary School



28247 Francis St Former
Yarraville Primary School

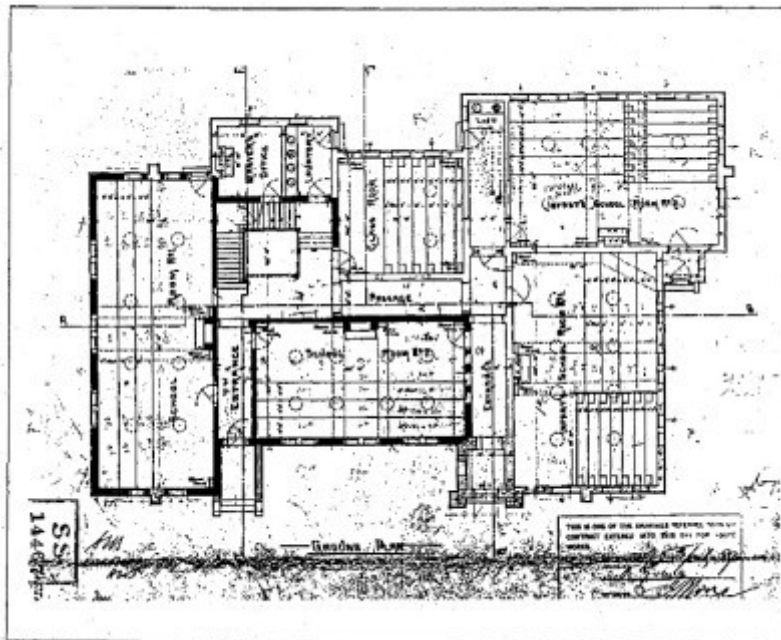


28247 Francis St Former
Yarraville Primary School



4 - 41 51-59 Francis Street, extract from contract drawings signed April 1899 (PWD collection)

28247 51 59 Francis Street 03



4 - 40 51-59 Francis Street, extract from contract drawings signed April 1889 (PWD collection)

28247 51 59 Francis Street 02

Location

59-61 Francis Street, YARRAVILLE VIC 3013 - Property No 4034017198

Municipality

MARIBYRNONG CITY

Level of significance

Included in Heritage Overlay

Heritage Overlay Numbers

HO37

Heritage Listing

Maribyrnong City

Statement of Significance

Last updated on -

A successful integration of two eras of building which is considered among the most developed examples of the towered Venetian Gothic revival government schools and comparatively externally unaltered (general window replacement in the Edwardian period elsewhere). Historically, a major early public building in Yarraville and the vehicle for some prominent educators in the State system.

Heritage Study/Consultant Maribyrnong - City of Footscray Urban Conservation Study, Graeme Butler, 1989;

Other Names Listed as number 51-59 in the Footscray Urban Conservation Study,

Hermes Number 28247

Property Number

Physical Description 1

Lawrence Burchell has noted Yarraville among other bell-towered school structures which were set on an E-plan and draw on the Italian Gothic for their stylistic inspiration. These include English examples such as Ettington Park, Warwickshire (1859) and, in Victoria, Stawell (1879), Newtown (1877), Kyneton, Moreland (1890), Wangaratta (1877), Ballarat, Armadale (1884) and Wales Street, Northcote.[4] Each is a variation on the common theme, as determined by their date. The later (and often bigger) designs possessing more vertical emphasis, with taller towers and flanking gables.

Yarraville is at the end of this progression and consequently is among the best developed of the type and configuration. An early photograph (c1909) shows the school complete with timber picket fence. [5]

Ref:

4 Burchell, p.150f

5 FFFY

Integrity

External Integrty

New windows have been added sympathetically to front and rear elevations and some gable finials have gone.

New wings added at rear and the picket fence replaced.

Physical Description 2

Streetscape

A large complex set among altered Victorian period houses on the west and early 20th century buildings on the east.

This place/object may be included in the Victorian Heritage Register pursuant to the Heritage Act 2017. Check the Victorian Heritage Database, selecting 'Heritage Victoria' as the place source.

For further details about Heritage Overlay places, contact the relevant local council or go to Planning Schemes Online <http://planningschemes.dpcd.vic.gov.au/>