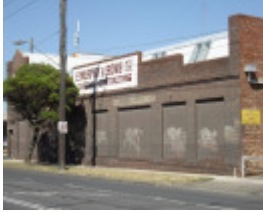

Murphy's Transport



HO182 (1) - Murphy's Transport, 248 Whitehall Street Yarraville.JPG



HO182 (2) - Murphy's Transport, 248 Whitehall Street, Yarraville.JPG

Location

248 Whitehall Street, YARRAVILLE VIC 3013 - Property No 4098002800

Municipality

MARIBYRNONG CITY

Level of significance

Included in Heritage Overlay

Heritage Overlay Numbers

HO182

Heritage Listing

Maribyrnong City

Statement of Significance

Last updated on -

E. Murphy & Sons transport depot is of regional historical significance as it is representative of the importance of road transport to the industrial development of the inner west. The buildings are of local architectural significance as an elaborated design solution to the particular function demonstrating their horse and wagon era inheritance. The site has a high degree of integrity, and in its local context, demonstrates the strong historical link between the company, and the bulk processing industries located opposite along the Yarraville wharves. Unusual as a family

operated transport company which attained sufficient prominence to justify such a purpose-built facility, most other such depots being unremarkable paved yards and workshops. (Criterion B2)

As the most distinctive place associated with goods transport in connection with the industries of the region, Murphy's Transport demonstrates the important industrial development of the region in the 20th century. (Criterion A4) The Murphy family have had an important association with transport and industry in the area for more than 140 years. (Criterion H1)

Australian Heritage Commission (AHC) criteria

The Australian Heritage Commission criteria consist of a set of eight criteria which cover social, aesthetic, scientific, and historic values. Each criterion has sub-criteria written specifically for cultural or natural values. The relevant criteria are:

B.2 rarity

A.4 demonstrates well the course and pattern of history, important historic events

H.1 association with important person or group

| | |
|---------------------------|--|
| Heritage Study/Consultant | Maribyrnong - Maribyrnong Heritage Review, Jill Barnard, Graeme Butler, Francine Gilfedder & Gary Vines, 2000; |
| Construction dates | 1933, |
| Other Names | Listed as number 230-252 in Maribyrnong Heritage Review Volume 3, pg 234, |
| Hermes Number | 28805 |
| Property Number | |

Physical Description 1

Array of predominantly red brick office, store and garage buildings arranged around a large open yard and reflecting the original horse era layout of the transport yard. The principal facade to Hyde Street features a tall curved pediment/parapet with raised lettering declaring the company name "E. Murphy & Sons". The office block behind has steel hopper sash windows and steel lintels over. Some cobbled crossovers mark the original driveways, now superseded by a wide concrete entry.

Physical Conditions

In good condition - most buildings relating to 1930s - 50s period survive in original state.

Integrity

Intact substantially to its post motor transport redevelopment of the 1930s.

Physical Description 2

Located opposite major industrial area including the Sugar Refinery and fertiliser works which gave them much of their business

Historical Australian Themes

Thematic context

Australian Principal Theme Moving goods and people

PAHT Subtheme: Moving goods and people by road

Local Theme Establishing lines and networks

Physical Description 3

Creation date(s): 1933c.

Heritage Significance *regional*

Map (Melway) 42 C9

Boundary description The extent of the current allotment

Local Government Area: City of Maribyrnong

Ownership Type

This place/object may be included in the Victorian Heritage Register pursuant to the Heritage Act 2017. Check the Victorian Heritage Database, selecting 'Heritage Victoria' as the place source.

For further details about Heritage Overlay places, contact the relevant local council or go to Planning Schemes Online <http://planningschemes.dpcd.vic.gov.au/>