

---

## HOUSE



Dwelling at 23 Bridge Street  
Korumburra 3950



House 23 Bridge Street



House 23 Bridge Street



House 23 Bridge Street

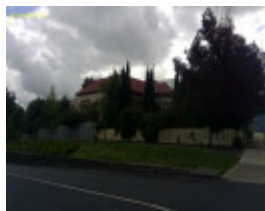


image86

---

### Location

23 BRIDGE STREET, KORUMBURRA, SOUTH GIPPSLAND SHIRE

### Municipality

SOUTH GIPPSLAND SHIRE

### Level of significance

Included in Heritage Overlay

### Heritage Overlay Numbers

HO144

### Heritage Listing

South Gippsland Shire

---

## Statement of Significance

Last updated on - November 23, 2022

### What is significant?

The dwelling, designed and constructed in 1905 by R.A. Kelly for A. Lamberton, at 23 Bridge Street, Korumburra is significant. It is a superior late Victorian Italianate style asymmetrical timber villa with a hip and valley corrugated iron roof and quality detailing. Notable elements include:

- The octagonal hipped bow added to the front of the projecting hip with segmental arched windows
- Block fronted weatherboards.
- Paired segmental arched windows to the front room and large door case with sidelights and highlights.
- The eaves decoration.
- The bullnose verandah with its paired turned timber posts with Corinthian capitals and ornate cast iron frieze.

Non-original alterations and additions to the house including the rear additions and other buildings are not significant. The timber picket fence, while sympathetic, is also not significant.

### How is it significant?

The dwelling at 23 Bridge Street, Korumburra is of local historic and aesthetic significance to the town of Korumburra.

### Why is it significant?

Historically, the dwelling demonstrates an important phase in the development of Korumburra in the first decade of the 20th Century, when it was the largest and most prosperous town in the Shire and is representative of the fine villas erected for local business people. (Criteria A & D)

Aesthetically, it is a superior example of a late Victorian villa with fine detailing. Of particular note are the original verandah posts and decoration. (Criterion E)

Heritage Study/Consultant	South Gippsland - Amendment C92 Heritage Review, David Helms Heritage Planning, 2014; South Gippsland - South Gippsland Heritage Study, David Helms with Trevor Westmore, 2004;
Construction dates	1905, 1905, 1905,
Architect/Designer	Kelly, RA, RA Kelly,
Other Names	-,
Hermes Number	30657
Property Number	

---

## Physical Description 1

The dwelling at 23 Bridge Road, Korumburra is a superior late Victorian Italianate style asymmetrical timber villa with a hip and valley corrugated iron roof and quality detailing. Notable elements include:

- The octagonal hipped bow added to the front of the projecting hip with segmental arched windows
- Block fronted weatherboards.
- Paired windows to the front room and large door case with sidelights and highlights.
- The eaves decoration.
- The bullnose verandah with its paired turned timber posts with Corinthian capitals and ornate cast iron frieze.
- The window hoods to the south side.

The house has a high degree of external intactness. The major visible alteration has been the removal of all

chimneys. There is a skillion addition at the rear. A sympathetic timber picket fence has been added to the street boundaries and the cottage garden developed by the current owner (2014) provides an appropriate setting.

*This place/object may be included in the Victorian Heritage Register pursuant to the Heritage Act 2017. Check the Victorian Heritage Database, selecting 'Heritage Victoria' as the place source.*

*For further details about Heritage Overlay places, contact the relevant local council or go to Planning Schemes Online <http://planningschemes.dpcd.vic.gov.au/>*