

FORMER BENDIGO HOTEL



H0863 FORMER BENDIGO
HOTEL LHA 2015 1.JPG



FORMER BENDIGO HOTEL
SOHE 2008



1 former bendigo hotel
dunolly front view



former bendigo hotel dunolly
front entrance



H0863 FORMER BENDIGO
HOTEL LHA 2015 2.JPG



H0863 FORMER BENDIGO
HOTEL LHA 2015 3.JPG



H0863 FORMER BENDIGO
HOTEL LHA 2015 4.JPG



H0863 FORMER BENDIGO
HOTEL LHA 2015 5.JPG



H0863 FORMER BENDIGO
HOTEL LHA 2015 6.JPG



H0863 FORMER BENDIGO
HOTEL LHA 2015 7.JPG



H0863 FORMER BENDIGO
HOTEL LHA 2015 8.JPG



20150815 153242



20150815 153315



20150815 153402



20150815 153418



20150815 154107



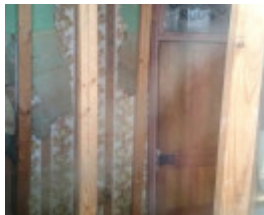
20150815 154057



20150815 154125



20150815 154155



20150815 153445



20150815 154245



20150815 154346



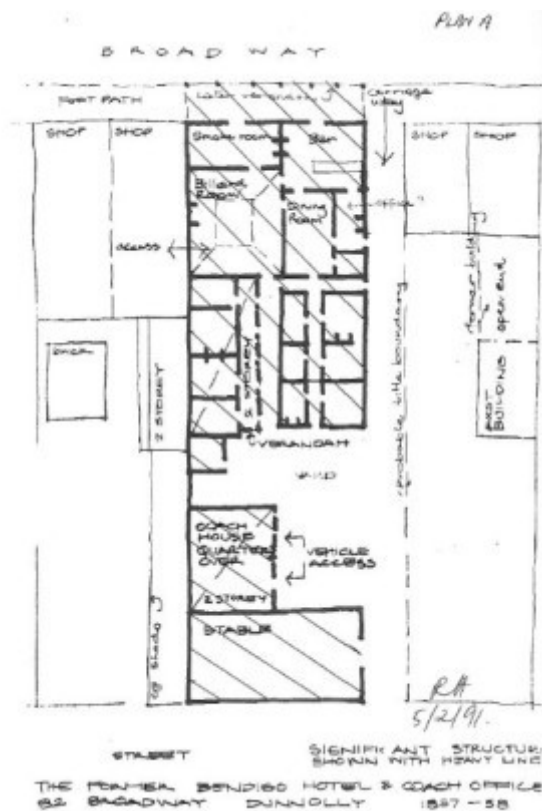
20150815 154413



20150815 154444



20150815 154454



H0863 H0863 plan

Location

82 BROADWAY DUNOLLY, CENTRAL GOLDFIELDS SHIRE

Municipality

CENTRAL GOLDFIELDS SHIRE

Level of significance

Registered

Victorian Heritage Register (VHR) Number

H0863

Heritage Overlay Numbers

HO2

VHR Registration

April 17, 1991

Heritage Listing

Statement of Significance

Last updated on - April 7, 2021

ASOURCE: REPORT TO THE MINISTER

THE FORMER BENDIGO HOTEL WAS CONSTRUCTED IN 1857-1858 BY ROBERT WITTACKER FOR GEORGE SIMPOSON. IT SERVED AS A HOTEL AND COBB AND CO. COACH HOUSE DURING THE EARLY YEARS OF THE GOLD RUSH, AND CONTINUED AS A HOTEL UNTIL 1922.

1. THE FORMER BENDIGO HOTEL IS IMPORTANT BECAUSE OF ITS HISTORICAL ASSOCIATIONS WITH THE GOLD RUSH AND WITH EARLY DAYS OF DUNOLLY TOWNSHIPS EXISTENCE.
2. ARCHITECTURALLY, THE PARAPETED ROOF TREATMENT OF THE FORMER BENDIGO HOTEL IS UNUSUAL.
3. THE FORMER BENDIGO HOTEL IS ALSO IMPORTANT BECAUSE OF THE ROLE IT PLAYED IN BEING THE EARLIEST MEETING PLACE FOR WHAT WAS ONCE A HIGHLY POPULATED AREA.
4. THE EXTRAORDINARY INTEGRITY OF ITS FABRIC AND PAINTED DECORATION MAKE THE FORMER BENDIGO HOTEL AN OUTSTANDING REPRESENTATIVE EXAMPLE OF THIS TYPE OF BUILDING.
5. THE BUILDING RETAINS ITS ORIGINAL INTERIORS.

Permit Exemptions

General Exemptions:

General exemptions apply to all places and objects included in the Victorian Heritage Register (VHR). General exemptions have been designed to allow everyday activities, maintenance and changes to your property, which don't harm its cultural heritage significance, to proceed without the need to obtain approvals under the Heritage Act 2017.

Places of worship: In some circumstances, you can alter a place of worship to accommodate religious practices without a permit, but you must **notify** the Executive Director of Heritage Victoria before you start the works or activities at least 20 business days before the works or activities are to commence.

Subdivision/consolidation: Permit exemptions exist for some subdivisions and consolidations. If the subdivision or consolidation is in accordance with a planning permit granted under Part 4 of the *Planning and Environment Act 1987* and the application for the planning permit was referred to the Executive Director of Heritage Victoria as a determining referral authority, a permit is not required.

Specific exemptions may also apply to your registered place or object. If applicable, these are listed below. Specific exemptions are tailored to the conservation and management needs of an individual registered place or object and set out works and activities that are exempt from the requirements of a permit. Specific exemptions prevail if they conflict with general exemptions.

Find out more about heritage permit exemptions [here](#).

Construction dates 1857,
Heritage Act Categories Registered place,
Hermes Number 346
Property Number

Extent of Registration

AMENDMENT OF REGISTER OF HISTORIC BUILDINGS

Historic Building No. 863, the former Bendigo Hotel, 82 Broadway, Dunolly.

(All buildings and land known as Crown Allotment 13, Section 14 in the Township of Dunolly, Parish of Dunolly, as shown hatched on Plan A endorsed by the Chairperson, Historic Buildings Council and held by the Director, Historic Buildings Council.)

[*Victoria Government Gazette* No. G14 17 April 1991 p.1008]

This place/object may be included in the Victorian Heritage Register pursuant to the Heritage Act 2017. Check the Victorian Heritage Database, selecting 'Heritage Victoria' as the place source.

For further details about Heritage Overlay places, contact the relevant local council or go to Planning Schemes Online <http://planningschemes.dpcd.vic.gov.au/>