

## FORMER NATIONAL SCHOOL



FORMER NATIONAL SCHOOL SOHE 2008



1 former national school bell street fitzroy street view dec1994



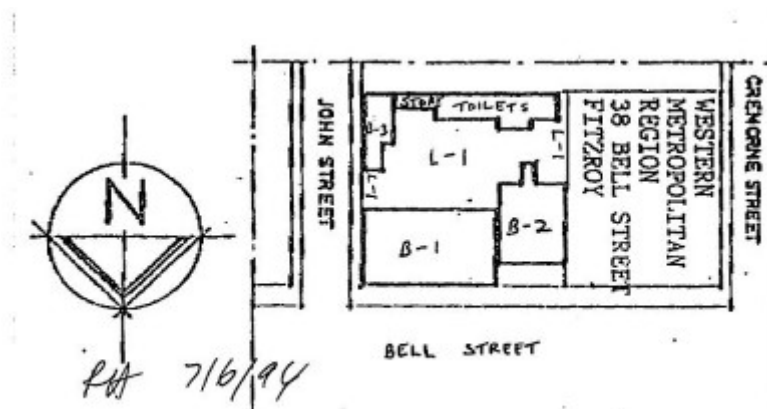
former national school bell street fitzroy front corner view dec1994



former national school bell street fitzroy rear view of terrace dec1994



former national school bell street fitzroy building 2 1994



h01031 plan h1031

### Location

40-48 BELL STREET FITZROY, YARRA CITY

### Municipality

YARRA CITY

## Level of significance

Registered

## Victorian Heritage Register (VHR) Number

H1031

## Heritage Overlay Numbers

HO149

## VHR Registration

August 20, 1982

## Amendment to Registration

September 1, 1994

## Heritage Listing

Victorian Heritage Register

---

## Statement of Significance

Last updated on - July 20, 1999

What is significant?

The Former National School, Fitzroy, was opened by Robert Bell as a day school in 1855. The building was extended to the east in 1865. The school was sold to the Government in 1873 and became a State School. In 1873 the adjacent two-storeyed terrace was converted for use as school rooms as were two brick cottages. In the 1920s the original National School was substantially altered. The westernmost terrace was demolished in 1944.

How is it significant?

The Former National School is of historical significance to the State of Victoria.

Why is it Significant?

The Former National School is of historical significance because of its important associations with the early history of education in Victoria both before and after the 1872 Education Act.

It is one of only 23 surviving Victorian National Board of Education schools. The Board functioned from 1851 to 1862, managing State-funded, non-denominational schools, of which 193 were built. The Former National School in Fitzroy is a rare example of this type of school and is believed to be the only surviving metropolitan example. After the Education Act of 1872 established free, secular and compulsory education for all, the school was sold to the government education authorities, becoming State School No.111. The school also has importance as a pioneer in the field of special education, becoming the first Victorian "special school" for handicapped children in 1913. In 1915 part of the school was used as a Domestic Arts School, which was so successful that similar courses were established at schools throughout Victoria.

The development of the complex and the changes to the buildings, including the conversion of the adjoining terrace, the 1920s alterations and the 1980s refurbishment, all demonstrate the changing functions of the school from its original purpose as a National School to its subsequent uses as a Common school, special school, part of Fitzroy Girls School (later Exhibition High School) and regional offices of the Education Department.

## Permit Exemptions

### General Exemptions:

General exemptions apply to all places and objects included in the Victorian Heritage Register (VHR). General exemptions have been designed to allow everyday activities, maintenance and changes to your property, which don't harm its cultural heritage significance, to proceed without the need to obtain approvals under the Heritage Act 2017.

**Places of worship:** In some circumstances, you can alter a place of worship to accommodate religious practices without a permit, but you must [notify](#) the Executive Director of Heritage Victoria before you start the works or activities at least 20 business days before the works or activities are to commence.

**Subdivision/consolidation:** Permit exemptions exist for some subdivisions and consolidations. If the subdivision or consolidation is in accordance with a planning permit granted under Part 4 of the *Planning and Environment Act 1987* and the application for the planning permit was referred to the Executive Director of Heritage Victoria as a determining referral authority, a permit is not required.

Specific exemptions may also apply to your registered place or object. If applicable, these are listed below. Specific exemptions are tailored to the conservation and management needs of an individual registered place or object and set out works and activities that are exempt from the requirements of a permit. Specific exemptions prevail if they conflict with general exemptions.

Find out more about heritage permit exemptions [here](#).

Construction dates	1858,
Heritage Act Categories	Registered place,
Other Names	FITZROY SPECIAL SCHOOL,
Hermes Number	446
Property Number	

---

## Extent of Registration

### AMENDMENT OF REGISTER OF HISTORIC BUILDINGS

Historic Building No. 1031

Former National School

38 Bell Street, Fitzroy.

(To the extent of:

1. All of the buildings known as the former National School, Bell Street, Fitzroy, excluding the modern toilet blocks and store, marked B-1, B-2, and B-3 on Plan 606044 endorsed by the Chairperson, Historic Buildings Council and held by the Director, Historic Buildings Council.
2. All of the land from the western building line to the eastern title boundary being part of the land described in

Certificate of Title Volume 612 Folio 335 marked L-1 on Plan 606044 endorsed by the Chairperson, Historic Buildings Council and held by the Director, Historic Buildings Council.)  
[Victoria Government Gazette No. G35 1 September 1994 p.2374]

*This place/object may be included in the Victorian Heritage Register pursuant to the Heritage Act 2017. Check the Victorian Heritage Database, selecting 'Heritage Victoria' as the place source.*

*For further details about Heritage Overlay places, contact the relevant local council or go to Planning Schemes Online <http://planningschemes.dpcd.vic.gov.au/>*