

# SHOPS



SHOPS SOHE 2008



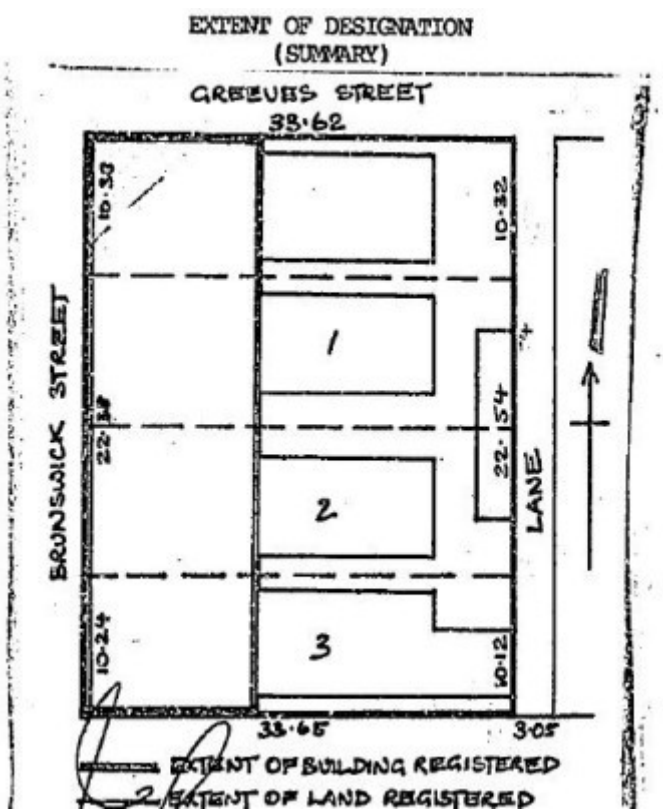
SHOPS SOHE 2008



SHOPS SOHE 2008



h00559 236 252 brunswick street



h00559 plan h0559

---

## Location

236-252 BRUNSWICK STREET AND 33-62 GREEVES STREET FITZROY, YARRA CITY

## Municipality

YARRA CITY

## Level of significance

Registered

## Victorian Heritage Register (VHR) Number

H0559

## Heritage Overlay Numbers

HO155

## VHR Registration

October 26, 1983

## Heritage Listing

Victorian Heritage Register

---

## Statement of Significance

Last updated on - July 13, 1999

The Shops at 236-252 Brunswick Street Fitzroy, a terrace of eight shops, was built in 1888 for the Australian Property and Investment Co. Ltd. The architect was John Beswicke and the builder Ralph Besant. The building was constructed of polychrome brick with rendered dressings and consists of three storeys facing the street with two storey wings at the rear. It has an unusual asymmetric composition, with a central tower (with lunettes) and a corner turret topped by a lantern. Fine polychrome brickwork on the facade is highlighted by unpainted cement render detailing, arches, impost string courses, pilasters and bracketed cornices. The pedimental motif in the parapet (originally repeated twice on the west elevation) is unusual, with a scalloped motif in the tympanum. Stilted arches are employed above the windows on the upper floor. The central entrance is topped by an elegant fanlight.

The Shops at 236-252 Brunswick Street Fitzroy are of historical and architectural significance to the State of Victoria.

The Shops at 236-252 Brunswick Street Fitzroy are of historical significance as rare examples of 1880s boom-era speculative building, and for the evidence they provide about the organisation of real estate finance in the latter decades of the 19th century. The shops were speculatively built and were typical of the kind of venture engaged in by the Australian Property and Investment Co. Ltd., one of the many companies floated towards the end of the boom years as a result of a deliberate reduction in the money supply initiated by the banks in order to curb inflation. The company was floated in 1888 by F. J. Derham, postmaster-general and managing director of Swallow and Ariell Ltd, originally for the purposes of raising capital to complete the construction of the now-demolished Australian Building. It attracted such diverse people as Alfred Deakin and James Munro to its

directorship. The company's fortunes reflected those of many companies when the boom turned to bust in the 1890s. When office space became increasingly difficult to let, speculative companies such as the Australian Property Investment Co. found themselves in great trouble and Munro's real estate bank bought out the assets of the company when it collapsed.

The Shops at 236-252 Brunswick Street Fitzroy are of historical significance as dominant landmarks in the city of Fitzroy and as important parts of the Greeves Street/Brunswick Street precinct, with its substantial 19th century streetscapes.

The Shops at 236-252 Brunswick Street Fitzroy are of architectural significance as rare examples of 1880s speculative commercial property development. The architecture of the buildings is unusual and flamboyant, reflecting the wealth and optimism of their time of construction as well as the speculative builder's need to attract attention to his product.

The shops incorporate a wide variety of elements in an asymmetric manner, including the central tower and corner turret, topped with a lantern and placed over a corner splay, the use of stilted and semi-circular arched windows, impost string courses, pilasters, a bracketed cornice and a continuous balustraded parapet with decorated pediments. The eclectic nature of the building is symptomatic not only of its speculative purpose but also of the work of its architect John Beswicke, one of the more innovative and eclectic designers in Melbourne at that time. In many ways this building has a marked similarity with Beswicke's own house, "Rotha" in Hawthorn (1887-88) in that they both use asymmetrically placed elements, particularly above the roof line, with little regard to the formalities of rational design. Both buildings are suggestive of the French Renaissance revival and presage later trends in Edwardian architecture, particularly in the use of diagonal corner elements.

## Permit Exemptions

### General Exemptions:

General exemptions apply to all places and objects included in the Victorian Heritage Register (VHR). General exemptions have been designed to allow everyday activities, maintenance and changes to your property, which don't harm its cultural heritage significance, to proceed without the need to obtain approvals under the Heritage Act 2017.

Places of worship: In some circumstances, you can alter a place of worship to accommodate religious practices without a permit, but you must [notify](#) the Executive Director of Heritage Victoria before you start the works or activities at least 20 business days before the works or activities are to commence.

Subdivision/consolidation: Permit exemptions exist for some subdivisions and consolidations. If the subdivision or consolidation is in accordance with a planning permit granted under Part 4 of the *Planning and Environment Act 1987* and the application for the planning permit was referred to the Executive Director of Heritage Victoria as a determining referral authority, a permit is not required.

Specific exemptions may also apply to your registered place or object. If applicable, these are listed below. Specific exemptions are tailored to the conservation and management needs of an individual registered place or object and set out works and activities that are exempt from the requirements of a permit. Specific exemptions prevail if they conflict with general exemptions.

Find out more about heritage permit exemptions [here](#).

Construction dates	1888,
Architect/Designer	Beswicke, John,
Heritage Act Categories	Registered place,

Hermes Number 452

Property Number

---

## History

Associated People: Assoc.People F J DERHAM

## Extent of Registration

### AMENDMENT OF REGISTER OF HISTORIC BUILDINGS

Historic Building No. 559, 236-252 Brunswick Street, Fitzroy (to the extent of the exterior of the three storey part of the building, being that part contained within a depth of approximately 13.7 metres from the Brunswick Street alignment, and the land entered in the Register Book as Volume 4598 Folio 583; Volume 8169 Folio 255; Volume 8057 Folio 241 and Volume 7917 Folio 005).

[*Victoria Government Gazette* No.109 26 October 1983 p. 3492-3493]

*This place/object may be included in the Victorian Heritage Register pursuant to the Heritage Act 2017. Check the Victorian Heritage Database, selecting 'Heritage Victoria' as the place source.*

*For further details about Heritage Overlay places, contact the relevant local council or go to Planning Schemes Online <http://planningschemes.dpcd.vic.gov.au/>*