

FORMER WESLEYAN CHURCH, PARSONAGE AND COMMON SCHOOL



FORMER WESLEYAN
CHURCH, PARSONAGE
AND COMMON SCHOOL
SOHE 2008



FORMER WESLEYAN
CHURCH, PARSONAGE
AND COMMON SCHOOL
SOHE 2008



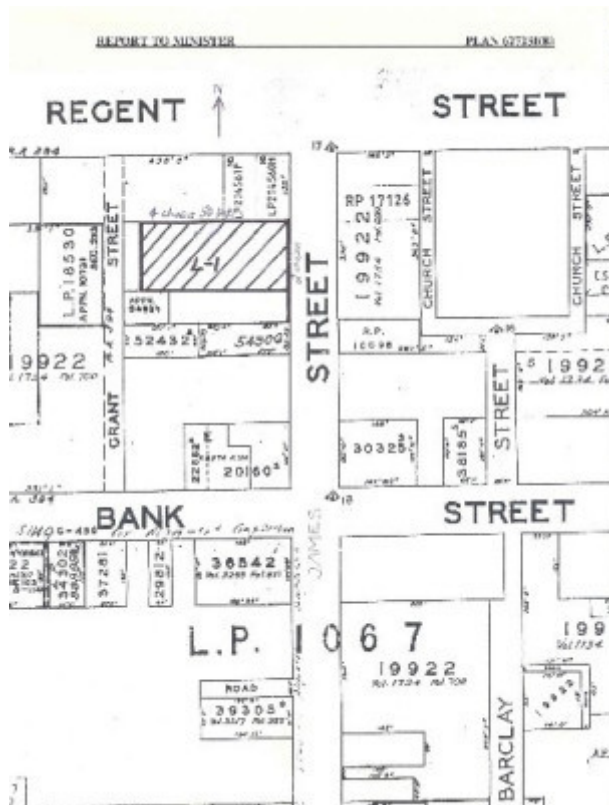
FORMER WESLEYAN
CHURCH, PARSONAGE
AND COMMON SCHOOL
SOHE 2008



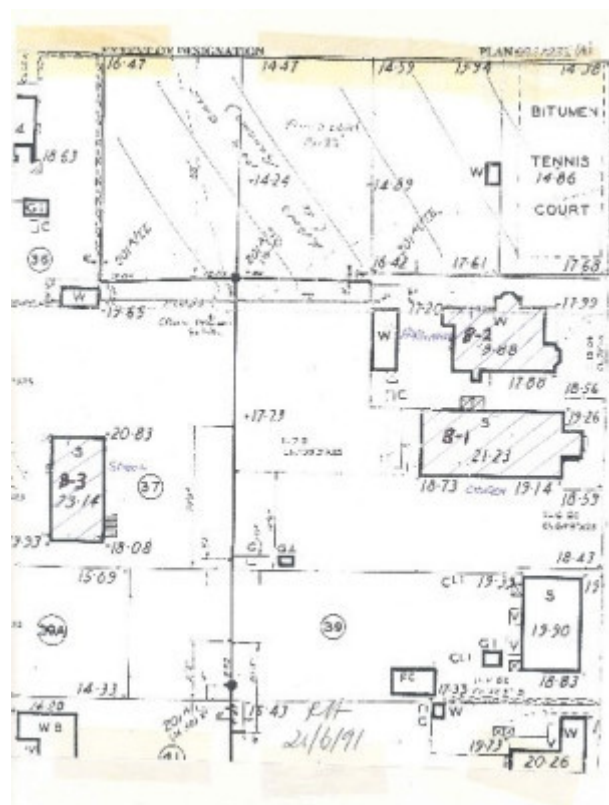
former wesleyan church
parsonage & common
school james street port fairy
front corner view of church
feb1990



Former Wesleyan Church
Parsonage & Common
School James Street Port
Fairy Front View of Church
February 1990



h00884 former wesleyan church parsonage common school james street port fairy plan b



h00884 former wesleyan church parsonage common school james street port fairy plan a

44-46 JAMES STREET PORT FAIRY, MOYNE SHIRE

Municipality

MOYNE SHIRE

Level of significance

Registered

Victorian Heritage Register (VHR) Number

H0884

Heritage Overlay Numbers

HO27

VHR Registration

August 28, 1991

Heritage Listing

Victorian Heritage Register

Statement of Significance

Last updated on - January 9, 1997

1. The former church (1855), parsonage (1899) and common school (1870) are significant as an important Wesleyan Methodist church complex in Victoria. The common school was used continuously as a Sunday school from its establishment in 1870.
2. The complex is also important as one of an exceptionally fine group of nineteenth century ecclesiastical buildings still extant in the important western district township of Port Fairy.
3. Its site has associations with James Atkinson (1806 - 1864), an important pioneer pastoralist who obtained the special survey of Belfast in the 1840's and was responsible for planning the subsequent township, giving grants of land for churches and other public buildings
4. The church displays a most distinctive design derived from Greek and Georgian architectural traditions. It has notable features including the exceptionally fine carvings of William Witton, described in 1894 as "an artist in stone-work unequalled in Australia. '. These carvings in the 1855 bluestone church include a bust of Wesley in the upper facade, a large scallop shell in the lunette over the door and delicately ornamented keystones to the front window.
5. The church, parsonage and school retain exceptional architectural integrity.
6. The former common school building at the rear of the church complex has been used from the beginning, at least partly, for Sunday school purposes, and is an unusual example of common school design in Victoria. Its dimensions and ornamentation make it superior to the typical examples which were generally plain with a "jail-like" appearance. It remains one of the last surviving common schools in Victoria.

Permit Exemptions

General Exemptions:

General exemptions apply to all places and objects included in the Victorian Heritage Register (VHR). General exemptions have been designed to allow everyday activities, maintenance and changes to your property, which don't harm its cultural heritage significance, to proceed without the need to obtain approvals under the Heritage Act 2017.

Places of worship: In some circumstances, you can alter a place of worship to accommodate religious practices without a permit, but you must **notify** the Executive Director of Heritage Victoria before you start the works or activities at least 20 business days before the works or activities are to commence.

Subdivision/consolidation: Permit exemptions exist for some subdivisions and consolidations. If the subdivision or consolidation is in accordance with a planning permit granted under Part 4 of the *Planning and Environment Act 1987* and the application for the planning permit was referred to the Executive Director of Heritage Victoria as a determining referral authority, a permit is not required.

Specific exemptions may also apply to your registered place or object. If applicable, these are listed below. Specific exemptions are tailored to the conservation and management needs of an individual registered place or object and set out works and activities that are exempt from the requirements of a permit. Specific exemptions prevail if they conflict with general exemptions.

Find out more about heritage permit exemptions [here](#).

Construction dates	1855,
Heritage Act Categories	Registered place,
Hermes Number	4586
Property Number	

History

Associated People:

Extent of Registration

AMENDMENT OF REGISTER OF HISTORIC BUILDINGS

Historic Building No. 884.

Former Wesleyan Methodist Church, Parsonage and Common School, James Street, Port Fairy.

To the extent of:

- (1) the buildings known as the former Wesleyan Methodist Church, Parsonage and Common School, James Street, Port Fairy, marked B-1, B-2 and B-3 on Plan 862731I(A), endorsed by the Chairperson, Historic Buildings Council and held by the Director, Historic Buildings Council; and
- (2) the land marked L-1 on Plan 862723I(B) being all the land described in the Registrar-General's Office Book 68 Memorial 156 and vested in the Uniting Church in Australia Book 818 Memorial 992.

[*Victoria Government Gazette* No. G33 28 August 1991 p.2423]

[NOTE: Original plan was on an inaccurate base map and was old law. Land was brought under the Torrens system in 1994 and surveyed to reflect adopted boundaries. The extent of registration has been remapped to

show new boundaries being all of Lot 1 and part of Lot 2 on Plan of Subdivision 333053.]

This place/object may be included in the Victorian Heritage Register pursuant to the Heritage Act 2017. Check the Victorian Heritage Database, selecting 'Heritage Victoria' as the place source.

For further details about Heritage Overlay places, contact the relevant local council or go to Planning Schemes Online <http://planningschemes.dpcd.vic.gov.au/>