

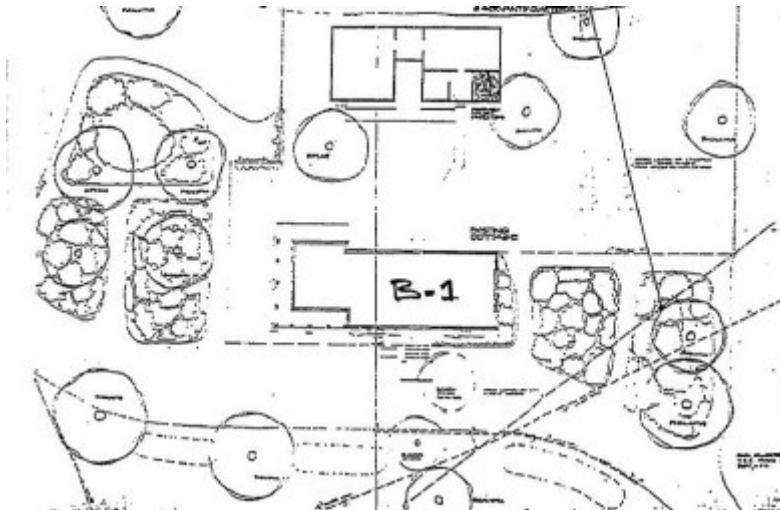
LA TROBE'S COTTAGE



LA TROBE'S COTTAGE
SOHE 2008



1 la trobe cottage 162
birdwood avenue south yarra
front view



h01076 plan h1076

Location

DALLAS BROOKS DRIVE MELBOURNE, MELBOURNE CITY

Municipality

MELBOURNE CITY

Level of significance

Registered

Victorian Heritage Register (VHR) Number

H1076

Heritage Overlay Numbers

HO398

VHR Registration

April 13, 1995

Heritage Listing

Victorian Heritage Register

Statement of Significance

Last updated on - September 22, 1999

What is significant?

La Trobe's Cottage is a conjectural reconstruction of the house of Superintendent La Trobe as it existed in about 1839-40 on his property, Jolimont, which lay on the south side of Wellington Parade. It contains within it a small portion of authentic fabric, including one wall of the building originally prefabricated by Manning of London. It was relocated to the Domain in 1963 and has recently been moved again, although it remains within the Domain. The single storey house is constructed of panellised timber, replicating the original pre-fabricated structure.

How is it significant?

La Trobe's Cottage is of historical, social and architectural significance to the State of Victoria.

Why is it significant?

La Trobe's Cottage is of historical significance as a symbol of Melbourne's early settlement, and because of its association with Charles La Trobe and, through him, with the beginnings of Victoria's political infrastructure and social development. The rudimentary, pre-fabricated nature of the original building has been well reproduced and provides an idea of the living conditions of the early colonists in Melbourne. The remnant traces of the original pre-fabricated house are evidence of the once-substantial industry of housing pre-fabrication that accompanied colonial expansion. The house contains some of La Trobe's personal effects, reinforcing the link with this important historical figure. La Trobe brought the original pre-fabricated building with him from England when he arrived in Port Phillip as the Superintendent of the district in 1839. The substantially intact dining room was added by La Trobe in 1840 and is thus one of the oldest surviving structures built in Melbourne. La Trobe became Lieutenant-Governor of Victoria when the colony achieved independence from NSW in 1851, and remained in the position until 1854 when he returned to England. During this time he lived in the house with his family.

La Trobe's Cottage is of social significance because of its association with the early stages of cultural heritage identification and protection in Victoria. The cottage was one of the first in Victoria to receive concentrated attention as an endangered heritage building. The removal of the building from its original site and its reconstruction demonstrate early techniques of heritage preservation. Removal and reconstruction are now avoided as much as possible, but nevertheless, the cottage has an important place in the genesis of the heritage conservation movement in Victoria.

La Trobe's Cottage is of architectural significance as an example, although largely a reconstruction, of an early pre-fabricated house. As a pre-fabricated dwelling it is indicative of the rudimentary nature of housing provision in the new colony. While pre-fabricated houses were imported into Australia in quite large numbers in the middle of the 19th century, this is a particularly early example and one of the few now surviving. The cottage provides an excellent illustration of early colonial domestic architecture and living arrangements.

Permit Exemptions

General Exemptions:

General exemptions apply to all places and objects included in the Victorian Heritage Register (VHR). General exemptions have been designed to allow everyday activities, maintenance and changes to your property, which don't harm its cultural heritage significance, to proceed without the need to obtain approvals under the Heritage Act 2017.

Places of worship: In some circumstances, you can alter a place of worship to accommodate religious practices without a permit, but you must **notify** the Executive Director of Heritage Victoria before you start the works or activities at least 20 business days before the works or activities are to commence.

Subdivision/consolidation: Permit exemptions exist for some subdivisions and consolidations. If the subdivision or consolidation is in accordance with a planning permit granted under Part 4 of the *Planning and Environment Act 1987* and the application for the planning permit was referred to the Executive Director of Heritage Victoria as a determining referral authority, a permit is not required.

Specific exemptions may also apply to your registered place or object. If applicable, these are listed below. Specific exemptions are tailored to the conservation and management needs of an individual registered place or object and set out works and activities that are exempt from the requirements of a permit. Specific exemptions prevail if they conflict with general exemptions.

Find out more about heritage permit exemptions [here](#).

Construction dates	1839,
Heritage Act Categories	Registered place,
Other Names	LATROBES COTTAGE, LATROBE'S COTTAGE, LA TROBES COTTAGE,
Hermes Number	4729
Property Number	

History

Contextual History:History of Place:

Charles La Trobe brought a pre-fabricated timber house with him when he came to Port Phillip in 1839. The house was manufactured by Manning of London. La Trobe made some additions to it once it was established in Melbourne, on his property that he called "Jolimont" in the area that now goes by that name. La Trobe occupied the house during the time he was Lieutenant-Governor of Victoria, between 1851 and 1854. When he returned to England he sold the property and the house was largely forgotten until it was purchased by the National Trust in a parlous state in the 1960s. It was dismantled and largely reproduced, incorporating some original elements, in the Domain in 1963.

Charles La Trobe came to the Port Phillip district in 1839 as the Superintendent of what was then a part of NSW. He was an active lobbyist for the separation of Victoria from NSW and became its first Lieutenant-Governor when independence was achieved in 1851.

Associated People: Charles La Trobe

Extent of Registration

AMENDMENT OF REGISTER OF HISTORIC BUILDINGS

Historic Building No. 1076:

La Trobe's Cottage, Birdwood Avenue, South Yarra.

(To the extent of:

All of the building known as La Trobe's Cottage (but excluding the outhouses) marked B1 on Plan 605859 signed by the Chair, Historic Buildings Council and held by the Director, Historic Buildings Council.)

[*Victoria Government Gazette* No. G14 13 April 1995 p.900]

[Note: a permit was issued in 1998 to relocate the cottage from Birdwood Avenue]

This place/object may be included in the Victorian Heritage Register pursuant to the Heritage Act 2017. Check the Victorian Heritage Database, selecting 'Heritage Victoria' as the place source.

For further details about Heritage Overlay places, contact the relevant local council or go to Planning Schemes Online <http://planningschemes.dpcd.vic.gov.au/>