

OSBORNE HOUSE



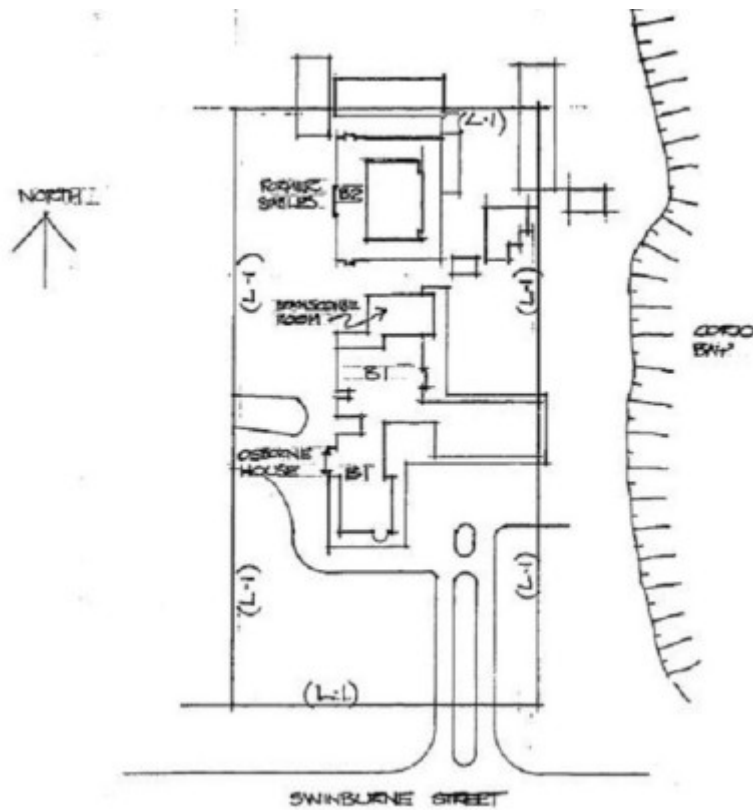
OSBORNE HOUSE SOHE
2008



OSBORNE HOUSE SOHE
2008



1 osborne house geelong
front view of house apr1997



h01101 plan h1101

Location

51 SWINBURNE STREET NORTH GEELONG, GREATER GEELONG CITY

Municipality

GREATER GEELONG CITY

Level of significance

Registered

Victorian Heritage Register (VHR) Number

H1101

Heritage Overlay Numbers

HO207

VHR Registration

September 14, 1995

Heritage Listing

Victorian Heritage Register

Statement of Significance

Last updated on - March 10, 2000

What is significant?

Osborne House, stables and courtyard were designed by leading Melbourne architects Webb and Taylor, and erected in 1858 for pastoralist Robert Muirhead, a former overseer with the Clyde Company. Originally built as a two storey bluestone structure with Barrabool sandstone dressings and single storey Doric colonnaded verandah in the Victorian Italianate style, it was extended in 1910, and in 1967.

How is it significant?

Osborne House is of architectural and historic significance to the state of Victoria.

Why is it significant?

Osborne House is characteristic of the work of Webb and Taylor, and a notable example of the partnership's conservative classical architecture. Osborne House, with the large stables building constructed around an open brick-paved courtyard, is among Geelong's finest early mansion houses and represents the way of life of the prominent Geelong pastoralists. Osborne House has notable historic associations, firstly with distinguished pioneer squatter Robert Muirhead, then as a townhouse of Western District pastoralist J C Currie.

Osborne House has also played a significant role in the history of the Royal Australian Navy, being the original home of the Royal Australian Naval College from 1913 to 1915. It was also used as the Shire of Corio offices for many years until the recent council amalgamation.

Permit Exemptions

General Exemptions:

General exemptions apply to all places and objects included in the Victorian Heritage Register (VHR). General exemptions have been designed to allow everyday activities, maintenance and changes to your property, which don't harm its cultural heritage significance, to proceed without the need to obtain approvals under the Heritage

Act 2017.

Places of worship: In some circumstances, you can alter a place of worship to accommodate religious practices without a permit, but you must [notify](#) the Executive Director of Heritage Victoria before you start the works or activities at least 20 business days before the works or activities are to commence.

Subdivision/consolidation: Permit exemptions exist for some subdivisions and consolidations. If the subdivision or consolidation is in accordance with a planning permit granted under Part 4 of the *Planning and Environment Act 1987* and the application for the planning permit was referred to the Executive Director of Heritage Victoria as a determining referral authority, a permit is not required.

Specific exemptions may also apply to your registered place or object. If applicable, these are listed below. Specific exemptions are tailored to the conservation and management needs of an individual registered place or object and set out works and activities that are exempt from the requirements of a permit. Specific exemptions prevail if they conflict with general exemptions.

Find out more about heritage permit exemptions [here](#).

Construction dates	1857,
Architect/Designer	Webb & Taylor,
Heritage Act Categories	Registered place,
Other Names	GEE LONG MARITIME AND NAVAL MUSEUM,
Hermes Number	4789
Property Number	

Extent of Registration

Under Section 14 of the **Historic Buildings Act 1981** the Governor in Council amends the Register by adding Historic Building No. 1101:

Osborne House, Swinburne Street, North Geelong, City of Greater Geelong.

Extent:

1. All of the buildings known as Osborne House, comprising Osborne House marked B-1 and the stables marked B-2, on Plan 605315A, endorsed by the Chair, Historic Buildings Council and held by the Director, Historic Buildings Council.
2. All the land described in Certificates of Title Volume 6400 Folio 850 and Volume 7327 Folio 230 marked L-1 on Plan No. 305315A, endorsed by the Chair, Historic Buildings Council and held by the Director, Historic Buildings Council.

Dated 12 September 1995

Responsible Minister
ROBERT MACLELLAN
Minister for Planning and
Local Government

KATHY WILSON
Clerk of the Executive Council

[Victoria Government Gazette G36 14 September 1995 2536]

This place/object may be included in the Victorian Heritage Register pursuant to the Heritage Act 2017. Check the Victorian Heritage Database, selecting 'Heritage Victoria' as the place source.

For further details about Heritage Overlay places, contact the relevant local council or go to Planning Schemes Online <http://planningschemes.dpcd.vic.gov.au/>