

KARIWARA DISTRICT SCOUT HEADQUARTERS



KARIWARA DISTRICT
SCOUT HEADQUARTERS
SOHE 2008



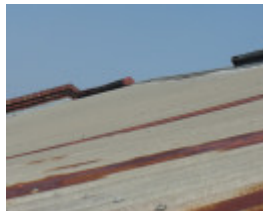
1 first footscray scout hall
hyde street footscray front
view apr1997



H1343 Existing condition -
Eaves gutter north side. Dec
2006.



H1343 Exterior - North
facade, note sagging roof
sheeting. Dec 2006.



H1343 Existing condition -
Roof, looking east, note
sagging ridge. Dec 2006.



H1343 Existing condition -
Exterior, south-east corner,
dislodged brickwork and
missing mortar. Dec 2006.



H1343 Exterior - West
facade, with raised ground
level. Dec. 2006.



H1343 Exterior - South
facade, with raised ground
level. Dec 2006.



H1343 Exterior - East (front)
facade, dislodged brickwork
and missing mortar. Dec
2006.



H1343 Subfloor, at shed hall
to brick front junction. Dec
2006.



H1343 Interior - roof truss at
east end of hall with missing
strut. Dec 2006.



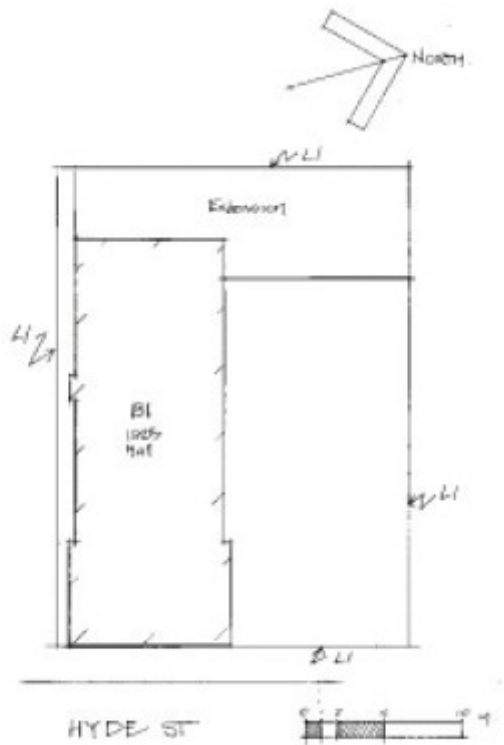
H1343 Interior - general view
looking east. Dec 2006.



H1343 Interior of kitchen extension. Dec 2006.



H1343 Interior of kitchen extension - general view. Dec 2006.



kariwara district scout headquarters plan

Location

4 HYDE STREET FOOTSCRAY, MARIBYRNONG CITY

Municipality

MARIBYRNONG CITY

Level of significance

Registered

Victorian Heritage Register (VHR) Number

H1343

Heritage Overlay Numbers

HO47

VHR Registration

September 4, 1997

Heritage Listing

Victorian Heritage Register

Statement of Significance

Last updated on - May 13, 1999

What is significant?

In 1910 Robert S.S. Baden-Powell retired from the British Army to dedicate himself to the setting up of the Boy Scout movement. Some two years earlier he had trialled a boy's camp off Poole in Dorset and wrote a manifesto for the proposed Boy Scout movement. Within a year Boy Scout troops sprang up in the United Kingdom, Europe and various parts of the British Empire. The movement was often spontaneous and in some troops there was often no adult troop leader.

First Footscray Boy Scout troop was formed in 1909 and by 1913 held a lease on the land from the Victorian Railways Department. It was not until 1925 that they had a permanent scout hall in the form of a converted wood-workshop. This was later completed with a brick facade incorporating a Scout emblem in 1929. Cub Scouts, Rover Scouts (both circa 1919) and Girl Guides (1946) also have used the site as the centre of their activities. The hall was also used as a recruitment centre during the Second World War. The Scouting movement has continued to use the site to the present day.

How is it significant?

The Kariwara District Scouting Hall (formerly First Footscray Scout Hall) is of historical and social importance to the State of Victoria.

Why is it significant?

The Kariwara District Scouting Hall is of historical and social importance as one of the earliest and continuing sites of the Boy Scout movement in Victoria. The Scout movement was to have a profound impact on adolescent boys and girls during the years 1910 to 1970. The hall was obtained and erected expressly for the purposes of the First Footscray Boy Scout Troop in 1925 with a new facade being added in 1929. This facade contains a pressed cement Fleur-de-lis, the adopted emblem of the Boy Scouts. The use of the building as a recruitment centre during World War II is a contributing factor in the social importance of the site.

The hall also contains carved fire surrounds, this together with the Fleur-de-lis candelabra, the scouts leaders brushwood chairs and table are of historical and social significance.

The site is also significant for its long term association with CA Hoadley, a geologist who was part of Mawson's 1911 - 1914 Antarctic Expedition. The Footscray Rover crew took on the name 'Mawson's Rovers', a name sanctioned by Mawson himself. Hoadley became Scoutmaster of 1st Footscray in 1921 and was instrumental in finding and having the hall moved to its present location. In 1924 he was invited to organise Scout Leader training in Victoria. In 1926 he instigated the first leader Training Course in Victoria and in conjunction with a friend, purchased land at Gembrook which they donated to the Scout Association and "Gilwell Park" the Association's principal Scout Park was founded. From 1928 to 1937 he was the Chief Commissioner for Scouting in Victoria. In 1932 he re-organised the Scout Movement within Victorian and decentralised the administration. In 1936 he was awarded an O.B.E. Hoadley died in 1947, while still chairman of the State Executive Committee of the Scout Association of Victoria.

Permit Exemptions

General Exemptions:

General exemptions apply to all places and objects included in the Victorian Heritage Register (VHR). General exemptions have been designed to allow everyday activities, maintenance and changes to your property, which don't harm its cultural heritage significance, to proceed without the need to obtain approvals under the Heritage Act 2017.

Places of worship: In some circumstances, you can alter a place of worship to accommodate religious practices without a permit, but you must **notify** the Executive Director of Heritage Victoria before you start the works or activities at least 20 business days before the works or activities are to commence.

Subdivision/consolidation: Permit exemptions exist for some subdivisions and consolidations. If the subdivision or consolidation is in accordance with a planning permit granted under Part 4 of the *Planning and Environment Act 1987* and the application for the planning permit was referred to the Executive Director of Heritage Victoria as a determining referral authority, a permit is not required.

Specific exemptions may also apply to your registered place or object. If applicable, these are listed below. Specific exemptions are tailored to the conservation and management needs of an individual registered place or object and set out works and activities that are exempt from the requirements of a permit. Specific exemptions prevail if they conflict with general exemptions.

Find out more about heritage permit exemptions [here](#).

Specific Exemptions:

EXEMPTIONS FROM PERMITS:

(Classes of works or activities which may be undertaken without a permit under Part 4 of the Heritage Act 1995)

Redecoration of the interior of the hall including repainting (except for chimney surrounds which contain the Penguin motif), floor coverings, replumbing and rewiring are permit exempt.

Construction dates	1925,
Heritage Act Categories	Registered place,
Other Names	FIRST FOOTSCRAY SCOUT HALL,
Hermes Number	5106
Property Number	

History

Contextual History:History of Place:

In 1910 Robert S.S. Baden-Powell retired from the British army as Lieutenant General and popular hero for his defence of Mafeking in the war with the Boers. Baden-Powell had trained his troops in the art of woodcraft and had in his military activities made use of observation balloons.

His book *Aids to Scouting* (1899), which he had written to cover aspects of his military experience and techniques came to be used widely to teach boys woodcraft. This became such a widespread practice that in 1907 he

conducted a trial camp with 20 select boys at Brownsea Island off Poole in Dorset. Here he wrote a manifesto for the proposed Boy Scout movement. So successful was the Brownsea Island experience that in 1908 he issued his second book *Scouting for Boys* as a series of six fortnightly publications available from bookstalls. This book was intended as a guide for the individual boy to teach self reliance however it quickly became the guiding text for scout troops which had by now started to spring up all over England. Baden-Powell's intention had been to base the principles of the scout movement within existing youth organisations, rather than set a new body but it soon became obvious that a new movement had come into being. This rivalled the Boys Brigade, a movement which had been in existence since the early 1880s. The Brigade had a Christian base and a somewhat militaristic approach to discipline rather than the self reliance Baden -Powell was seeking. With his retirement from the army in 1910, Baden-Powell set about dedicating himself to the Boy Scout movement. Already Boy Scout groups were starting to appear all over the Commonwealth and countries as disparate as Sweden and Mexico.

Baden-Powell's idea was that boys should be organised into subgroups of six or seven under a patrol leader. Boys would be trained in outdoor activities particularly those associated with camping and survival in the outdoors. Skills such as reconnaissance, map reading, tracking, signalling, knotting and first aid were rewarded with badges of merit. As well as this there were oaths, scout law and loyalty pledges to the Country. Symbols of the Scouts include a Fleur-de-lis badge, a left handed handshake and the motto "Be Prepared".

The scouting movement Baden Powell founded also sponsored similar desires in young women and in 1910, Baden-Powell's sister Agnes, herself a balloonist and aviatrix, helped set up the Girl Guides. In 1912 the Girl Guides were formed in the USA.

In 1920 the Boy Scouts held their first world Jamboree in London. Now doubt this provided an opportunity to count heads as the full extent of the movement had not officially been gauged. It was at this meeting that Baden-Powell was declared Chief Scout of the World. In 1922 Baden-Powell was made a baronette and then a baron in 1929. Baden-Powell 1st Baron of Gilwell, died in Kenya in 1941, after moving there for health reasons. He was survived by his wife who died in 1977.

In Australia, the Boy Scout movement was equally as quick to catch on as elsewhere. Here the movement was brought about through a personal connection between Mr T.H. Roydhouse editor of Sydney's Sunday Times and Baden-Powell. Copies of *Scouting for Boys* were sent to Roydhouse and in late March 1908 the first meeting of a Scout troop was held in Waverley. New troops sprang up rapidly there-after and by the close of 1908 the NSW membership stood at 1,200.

The start of Scouting came in Victoria through a personal contact. Roy McIndoe, a pupil of Taroonga Rd State School, was in correspondence with one of the boys who had been on the Brownsea Island camp. Some pamphlets and other items were passed on to him and this inspired the creation of the 1st Caulfield Scout Troop. This was followed by Malvern, Hawksburn, Brighton, Carlton, YMCA, Melbourne, Ivanhoe, Toorak, and so on until even country troops were being formed. In this period substantiating the formation date of each troop became difficult. Groups of boys would form and then seek out a willing adult to act as their Scout Master.

History of Place:

The site of the present building was the home of the 1st Footscray Scout Group which commenced in 1909, just 12 months after the Brownsea Island gathering in England.

The troop was led by C. A. (Arch) Hoadley, a geologist who subsequently went on Scott's 1911 Antarctic Expedition. Hoadley was also later to become Commissioner for Training. By 1913 the Scouts were successful in obtaining a twenty-five year lease on the Hyde St land from the Victorian Railways. Ten years later funds had been raised for the procurement of a hall. Hoadley was instrumental in obtaining the 'Carpenter Shop' from the Footscray Technical School nearby for this use, and in 1925 it was transported to the site. A kitchen and toilets were added to the rear of the building and a wing to the north and rear provided additional meeting and storage space. The Hall was officially opened on 19 November 1925. In 1929 the present brick front was added. The frontage provides an Honour Room, loft and foyer space as well as a small verandah to the street. In 1974/75 the hall exterior was metal clad and new windows fitted.

The site was not only used by the Boy Scout troop but also a Cub Pack and Rover Crew were on site by the end of 1919. The Rover Crew were known as Mawson's Rovers, a name sanctioned by Mawson (the Antarctic explorer) himself. The Second World War saw the site used as a recruitment centre and by war's end in 1946, the Girl Guides were also using the hall as a centre of activity.

The hall remains in use by the Scout district and also acts as a depot for activity equipment.

Associated People: Assoc.People CA HOADLEY

Extent of Registration

1. All the building marked B1 and all the land marked L1 on Plan No. 607710 held by the Executive Director and being part of Certificate of Title Vol. 10159 Fol. 864, and on lease to the Scout Association of Victoria from the Public Transport Corporation.

This place/object may be included in the Victorian Heritage Register pursuant to the Heritage Act 2017. Check the Victorian Heritage Database, selecting 'Heritage Victoria' as the place source.

For further details about Heritage Overlay places, contact the relevant local council or go to Planning Schemes Online <http://planningschemes.dpcd.vic.gov.au/>