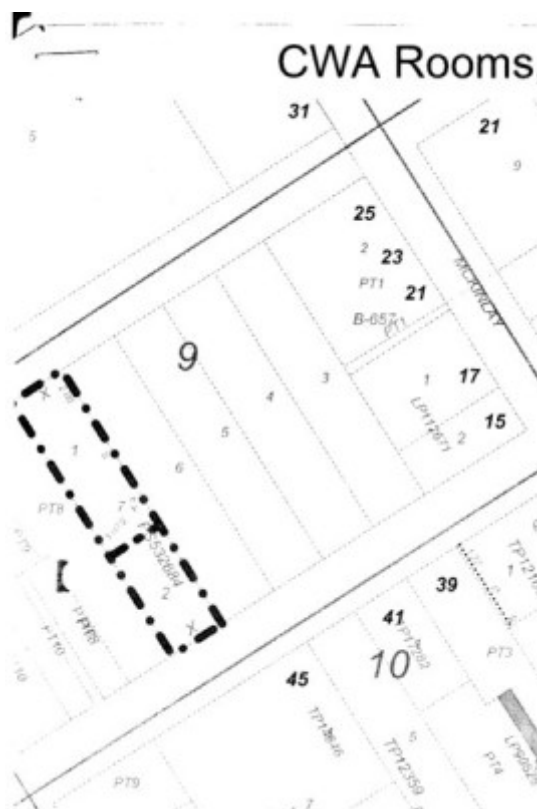


CWA ROOMS



52841 CWA ROOMS



52841 164 henty st0001

Location

164 Henty Street,CASTERTON, Glenelg Shire

Municipality

GLENELG SHIRE

Level of significance

Recommended for Heritage Overlay

Heritage Listing

Glenelg Shire

Statement of Significance

Last updated on -

What is significant?

The CWA Rooms, 164 Henty Street, Casterton are located on the north side of the main street, about 300m from the commercial centre of the township. The building is a small timber cottage, clad in imitation brick with a corrugated iron roof. The original cottage had a passageway along the western wall of the building, with four rooms opening off the passage to the west. The passageway then dog-legged along the northern wall, leading to a staircase which accessed a single room at the rear on the second storey, perhaps a maid or servants quarters. The land was first taken up in 1856, but no buildings were noted in the rate books until the late 1880s, when the owner was listed as John Tytherleigh, librarian. Other sources list John Tytherleigh as a blacksmith, with premises on the north east corner of Clarke and Murray Streets. It is believed that John Tytherleigh had the house built in the 1880s, and that descendants of the family lived there until the mid twentieth century. The Casterton Branch of the CWA started in 1934, and held its monthly meetings in a variety of locations until 1964, when 164 Henty Street was purchased by the CWA with an interest free loan. At that time the internal walls, staircase and upper storey were removed, and the kitchen, toilet and store-room were added. The CWA are an important part of the local community, and are still very actively involved on a number of levels in catering, fund raising and charity. As an organisation, it is highly respected and revered by the people of Casterton and the surrounding areas. The CWA still own and operate from 164 Henty Street. The building is in good condition, but has had its integrity compromised by the removal of the internal walls and upper storey, and the addition of imitation brick cladding on the exterior walls.

How is it significant?

The CWA Rooms are of social and architectural significance to the Glenelg Shire.

Why is it significant?

The CWA rooms are of social significance as a representation of the role that the CWA has played in the local and extended community in and around Casterton for over seventy years. The building is socially important for its enduring civic value to the community. It is of architectural interest for the unusual plan (for a detached house) of the building for a residential cottage, being more like a high density city cottage than a cottage situated on a large allotment in a small country town.

Heritage Study/Consultant	Glenelg - Glenelg Shire Heritage Study Part One, Carlotta Kellaway, David Rhodes Mandy Jean, 2002;
Construction dates	1880,
Hermes Number	52841
Property Number	

Usage/Formal Usage

Physical Description 1

The building known as the Casterton CWA Rooms is a small asymmetrical single storey timber cottage with a painted corrugated iron roof and imitation brick cladding on the timber walls. The front door has red glass panes on either side of the opening and a decorative fanlight with geometric patterned glass above. The door is a four panelled timber door located to the extreme west of the facade. A double hung sash window is also located on the facade. The original cottage had a passageway along the western wall of the building, with four rooms opening off the passage to the west. The passageway then dog-legged along the northern wall, leading to a staircase which accessed a single room at the rear on the second storey, perhaps a maid or servants quarters. All internal walls and the staircase and second storey have been removed. It is interesting for the original plan of the house, which would be more often associated with high density attached cottages, common in cities rather than a plan more typical of a detached cottage. The garden is not significant.

Physical Conditions

Good

Historical Australian Themes

8.5: Forming associations

8.5.2: Helping other people

8.5.3: Associating for mutual aid

8.5.4: Pursuing common leisure interests

This place/object may be included in the Victorian Heritage Register pursuant to the Heritage Act 2017. Check the Victorian Heritage Database, selecting 'Heritage Victoria' as the place source.

For further details about Heritage Overlay places, contact the relevant local council or go to Planning Schemes Online <http://planningschemes.dpcd.vic.gov.au/>