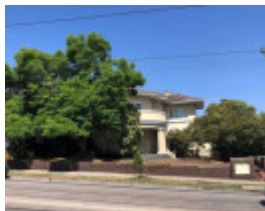

MELVILLE COURT



453 Glenferrie Road,
Kooyong



Melville Court



Melville Court



Melville Court



P1040360.jpeg

Location

453 GLENFERRIE ROAD,, KOOYONG VIC 3144 - Property No 1175

Municipality

STONNINGTON CITY

Level of significance

Incl in HO area Significant

Heritage Overlay Numbers

HO180

Heritage Listing

Stonnington City

Statement of Significance

Last updated on -

This place was reviewed by *Residential Flats in Stonnington Study Stage 2* (Context, 2011) and is recommended for detailed assessment in Stage 3. It is of potential significance:

As an early example of the luxury or mansion flat type

As evidence of early tram development along electric tram routes

Heritage Study/Consultant	Stonnington - City of Stonnington Heritage Overlay Report (Stages 1-5) 1998, Bryce Raworth P/L, 1998;
Construction dates	1922,
Other Names	Luxury or Mansion Flats,
Hermes Number	54817
Property Number	

Usage/Former Usage

Double storey interwar villa with carport extension.

Physical Description 1

Double storey interwar villa with carport extension.

This place/object may be included in the Victorian Heritage Register pursuant to the Heritage Act 2017. Check the Victorian Heritage Database, selecting 'Heritage Victoria' as the place source.

For further details about Heritage Overlay places, contact the relevant local council or go to Planning Schemes Online <http://planningschemes.dpcd.vic.gov.au/>