

# PRIMARY (STATE) SCHOOL NO.2105 AND FORMER RESIDENCE



64 - Kangaroo Primary State School Elth Yarr Glen Rd - Shire of Eltham Heritage Study 1992



64 - Kangaroo Primary State School Elth Yarr Glen Rd\_02 - Shire of Eltham Heritage Study 1992



64 - Kangaroo Primary State School Elth Yarr Glen Rd\_03 - Shire of Eltham Heritage Study 1992



64 - Kangaroo Primary State School Elth Yarr Glen Rd\_06 - Shire of Eltham Heritage Study 1992



64 - Kangaroo Primary State School Elth Yarr Glen Rd\_08 - Shire of Eltham Heritage Study 1992



64 - Kangaroo Primary State School Elth Yarr Glen Rd\_09 - Shire of Eltham Heritage Study 1992



64 - Kangaroo Primary State School Elth Yarr Glen Rd\_10 - Shire of Eltham Heritage Study 1992



64 - Kangaroo Primary State School Elth Yarr Glen Rd\_12 - Shire of Eltham Heritage Study 1992



64 - Kangaroo Primary State School Elth Yarr Glen Rd\_13 - Shire of Eltham Heritage Study 1992



64 - Kangaroo Primary State School Elth Yarr Glen Rd\_14 - Shire of Eltham Heritage Study 1992



HO47 Kangaroo Ground Primary - plan drawings 3.jpg



Kangaroo Primary State School Elth Yarr Glen Rd Colour 1 - Shire of Eltham Heritage Study 1992



Kangaroo Primary State School Elth Yarr Glen Rd Colour 2 - Shire of Eltham Heritage Study 1992



Kangaroo Primary State School Elth Yarr Glen Rd Black & White 2 - Shire of Eltham Heritage Study 1992



Kangaroo Primary State School Elth Yarr Glen Rd Colour 3 - Shire of Eltham Heritage Study 1992



Kangaroo Primary State School Elth Yarr Glen Rd Colour 4 - Shire of Eltham Heritage Study 1992



Kangaroo Primary State School Elth Yarr Glen Rd Colour 5 - Shire of Eltham Heritage Study 1992



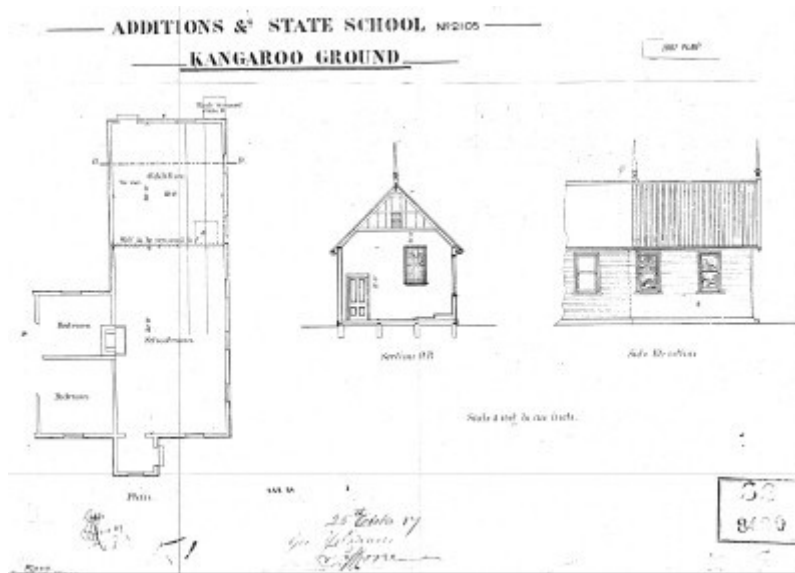
Kangaroo Primary State School Elth Yarr Glen Rd Colour 6 - Shire of Eltham Heritage Study 1992



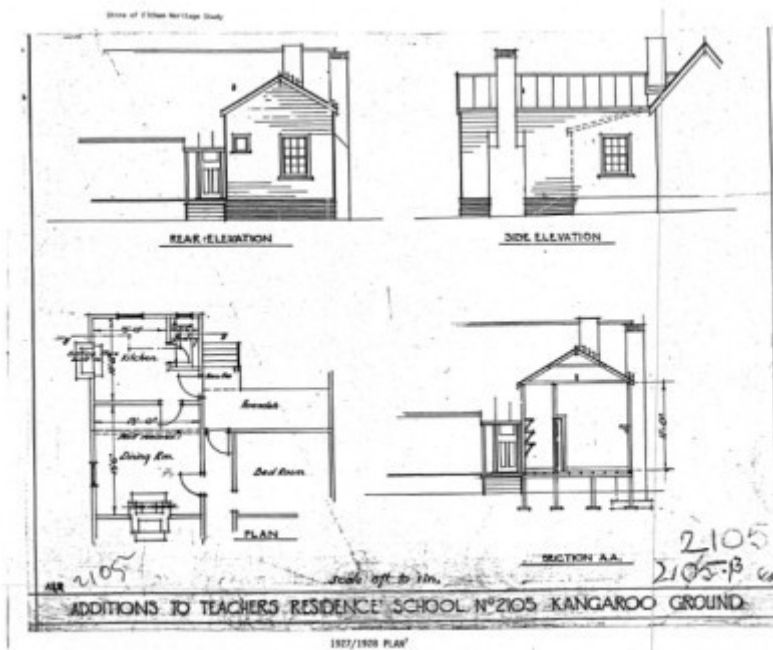
Kangaroo Primary State School Elth Yarr Glen Rd Colour 7 - Shire of Eltham Heritage Study 1992



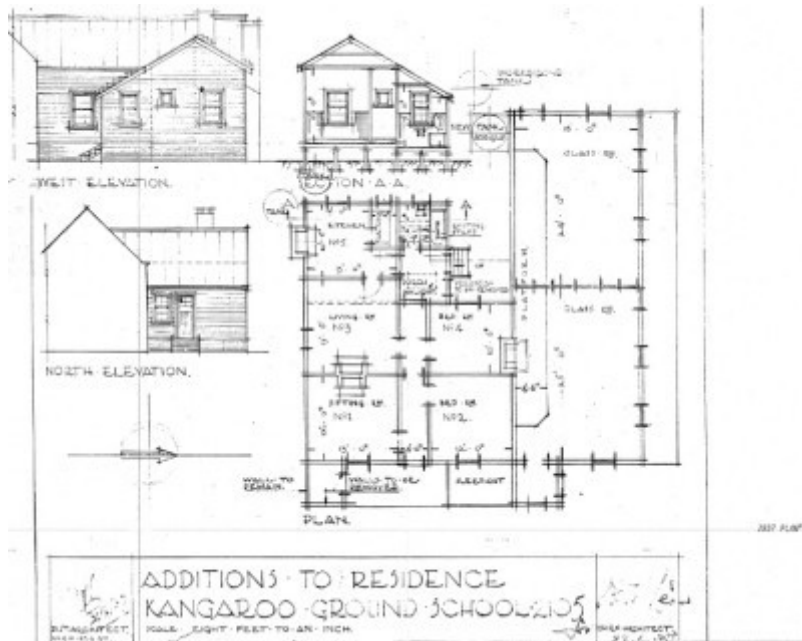
Kangaroo Primary State School Elth Yarr Glen Rd Black & White 3 - Shire of Eltham Heritage Study 1992



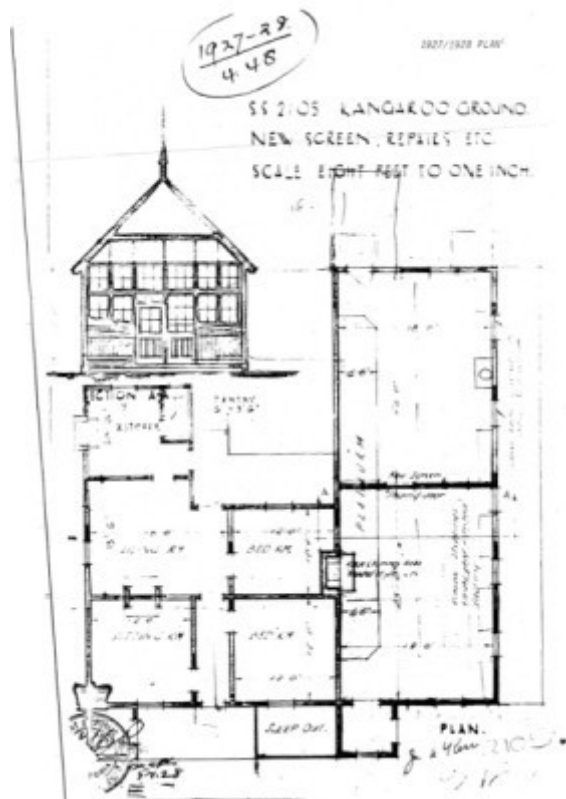
64 - Kangaroo Primary State School Elth Yarr Glen Rd\_04 - Shire of Eltham Heritage Study 1992



64 - Kangaroo Primary State School Elth Yarr Glen Rd\_05 - Shire of Eltham Heritage Study 1992



64 - Kangaroo Primary State School Elth Yarr Glen Rd\_07 - Shire of Eltham Heritage Study 1992



64 - Kangaroo Primary State School Elth Yarr Glen Rd\_11 - Shire of Eltham Heritage Study 1992

**Location**

275 ELTHAM-YARRA GLEN ROAD KANGAROO GROUND, NILLUMBIK SHIRE

## Municipality

NILLUMBIK SHIRE

## Level of significance

Included in Heritage Overlay

## Heritage Overlay Numbers

HO47

## Heritage Listing

Nillumbik Shire

---

## Statement of Significance

Last updated on - January 5, 2010

REVISED STATEMENT OF SIGNIFICANCE, CONTEXT, 2010

### ***What is significant?***

The c1878 State school, the c1887 school room to the west, and the site to a radius of 30 metres.

The c1879 residence, the c1920s small room built on the front verandah of the residence (which served as a State savings bank agency until c1934), the c1937 bathroom and rear porch, and the site to a radius of 30 metres.

### ***How is it significant?***

The State school is historically, socially and aesthetically significant to the Shire of Nillumbik.

The residence is historically, socially and aesthetically significant to the Shire of Nillumbik.

### ***Why is it significant?***

Historically and socially, the school's construction was a reflection of the growth of Kangaroo Ground during the 1870s and the school has served the local community ever since (Criterion A & G). The school is historically and aesthetically significant as one of a group of three well preserved public buildings in the Kangaroo Ground hamlet (see also HO46 and HO48) and as a major heritage component of Kangaroo Ground which was one of the earliest settled areas of the Shire and which has the character of an English village rather than an Australian settlement (Criteria A & E).

The residence is historically and socially significant because in addition to being associated with the school, it has also acted as a State Savings Bank agency and is currently used by the Eltham Historical Society (Criteria A & G).

|                           |   |
|---------------------------|---|
| Heritage Study/Consultant | Nillumbik - Shire of Eltham Heritage Study, David Bick, 1992; |
| Construction dates        | 1878, 1879, 1887, 1920, 1928, 1927, 1927, 1931, 1937,         |
| Other Names               | 275 ELTHAM-YARRA GLEN RD, KANGAROO GROUND,                    |
| Hermes Number             | 55573   |

Property Number

---

## **Historical Australian Themes**

TOWNSHIP DEVELOPMENT

4.5 Making settlements to serve rural Australia.

6.2 Establishing schools

8.14 Living in the country and rural settlements

## **Physical Description 1**

Style Victorian.

Plan L-shaped building: east-west wing schoolroom, north-south (road frontage) section mostly residence.

Single storeyed.

Walls timber stud construction, weatherboard clad.

Roof gabled, corrugated iron sheeted.

Features are the basic design, the windows and doors, schoolroom porch projecting from road facade and the verandahs to east (front) north and part of west originally. The schoolroom has later windows added. The whole building is very largely intact.

## **Usage/Former Usage**

Original Use: State School and teacher's residence

Later Use: Primary School and Eltham Historical Society purposes

*This place/object may be included in the Victorian Heritage Register pursuant to the Heritage Act 2017. Check the Victorian Heritage Database, selecting 'Heritage Victoria' as the place source.*

*For further details about Heritage Overlay places, contact the relevant local council or go to Planning Schemes Online <http://planningschemes.dpcd.vic.gov.au/>*