

# SOUTER HOUSE



73 - Souter House 19  
Falkiner St Eltham - Shire of  
Eltham Heritage Study 1992



73 - Souter House 19  
Falkiner St Eltham\_02 -  
Souter House in 1949 - Shire  
of Eltham Heritage Study  
1992



73 - Souter House 19  
Falkiner St Eltham\_03 -  
Souter House present day -  
Shire of Eltham Heritage  
Study 1992



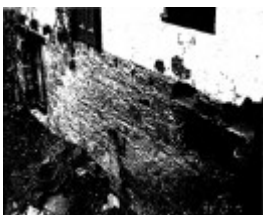
73 - Souter House 19  
Falkiner St Eltham\_04 - North  
West (rear corner) of the  
Souter House in 1949 - Shire  
of Eltham Heritage Study  
1992



73 - Souter House 19  
Falkiner St Eltham\_05 -  
Original outside entry to the  
basement floor at the south  
east corner of the building in  
1949. The ground in front of  
the Souter House was  
excavated and removed in  
recent years by the present  
owners - Shire of



73 - Souter House 19  
Falkiner St Eltham\_07 - Shire  
of Eltham Heritage Study  
1992



73 - Souter House 19  
Falkiner St Eltham\_08 - Shire  
of Eltham Heritage Study  
1992



Souter House 19 Falkiner St  
Eltham Black & White 1 -  
Shire of Eltham Heritage  
Study 1992



Souter House 19 Falkiner St  
Eltham Colour 1 - Shire of  
Eltham Heritage Study 1992



Souter House 19 Falkiner St  
Eltham Colour 3 - Shire of  
Eltham Heritage Study 1992



Souter House 19 Falkiner St  
Eltham Black & White 2 -  
Shire of Eltham Heritage  
Study 1992



Souter House 19 Falkiner St  
Eltham Black & White 3 -  
Shire of Eltham Heritage  
Study 1992



Souter House 19 Falkiner St  
Eltham Black & White 4 -  
Shire of Eltham Heritage  
Study 1992

---

## Location

23 FALKINER STREET ELTHAM, NILLUMBIK SHIRE

## Municipality

NILLUMBIK SHIRE

## Level of significance

Included in Heritage Overlay

## Heritage Overlay Numbers

HO54

## Heritage Listing

Nillumbik Shire

---

## Statement of Significance

Last updated on - January 5, 2010

REVISED STATEMENT OF SIGNIFICANCE, CONTEXT, 2010

**What is significant?**

The c1850s house, the c1950s-1980s additions and alterations and the site to a radius of 30 metres.

**How is it significant?**

The house is historically, architecturally and aesthetically significant to the Shire of Nillumbik.

**Why is it significant?**

The house is historically significant as the oldest mud brick building in the Shire of Nillumbik, as one of less than half a dozen buildings from the 1850s that survive in the Shire (Criterion B). Also for its associations with Mervyn Skipper from the well-known Eltham family who was one of the founders of the artist's colony at Montsalvat (Criterion H). The house is architecturally significant because its north section was designed by the noted 'Eltham-style' architect, Alistair Knox, and the two long oregon beams supporting the main floor were added by the noted 'Eltham-style' builder, Horrie Judd (Criterion H).

Heritage Study/Consultant Nillumbik - Shire of Eltham Heritage Study, David Bick, 1992;

Construction dates 1850, 1850,

Hermes Number 55775

Property Number

---

**Historical Australian Themes****EARLY SETTLEMENT**

3.14.2 Using Australian materials in construction

8.10.4 Designing and building fine buildings

8.12 Living in and around Australian homes

8.14 Living in the country and rural settlements

**Physical Description 1**

Style Victorian.

Design uncommon.

Plan rectangular.

Single storeyed with full size originally windowless basement. Walls local sandstone to basement, mud brick to main floor above.

Roof gabled with eaves, corrugated iron clad. Features are the scale of the building, mud brick walls and sandstone lower storey which has recently been almost fully exposed on the Falkiner Street side. Also the multi-pane windows, which may be original, the gable roof and the large fireplace. The present doors to the basement date from the Brocksopp's time of ownership. The grounds contain mature Elm trees and a plum hedge on the boundary with the adjoining number 55.

**Usage/Former Usage**

Original Use: Dwelling?

Later Use: Gallery in the basement and dwelling

Present Use: Dwelling

*This place/object may be included in the Victorian Heritage Register pursuant to the Heritage Act 2017. Check the Victorian Heritage Database, selecting 'Heritage Victoria' as the place source.*

*For further details about Heritage Overlay places, contact the relevant local council or go to Planning Schemes Online <http://planningschemes.dpcd.vic.gov.au/>*