

# HURST FAMILY CEMETERY



81 - Hurst Family Cemetery  
Greysarps Rd - Shire of  
Eltham Heritage Study 1992



81 - Hurst Family Cemetery  
Greysarps Rd\_02 - Shire of  
Eltham Heritage Study 1992



81 - Hurst Family Cemetery  
Greysarps Rd\_03 - Shire of  
Eltham Heritage Study 1992



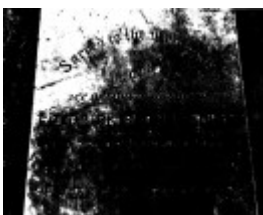
81 - Hurst Family Cemetery  
Greysarps Rd\_04 - Shire of  
Eltham Heritage Study 1992



81 - Hurst Family Cemetery  
Greysarps Rd\_05 - Henry  
Facey Hurst, this private  
cemetery was established  
following his death in 1866  
(ELHPC NO.1062) - Shire of  
Eltham Heritage Study 1992



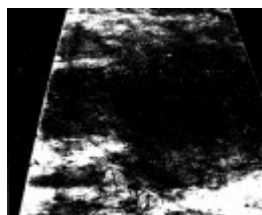
81 - Hurst Family Cemetery  
Greysarps Rd\_06 - Shire of  
Eltham Heritage Study 1992



81 - Hurst Family Cemetery  
Greysarps Rd\_07 - Shire of  
Eltham Heritage Study 1992



81 - Hurst Family Cemetery  
Greysarps Rd\_08 - Shire of  
Eltham Heritage Study 1992



81 - Hurst Family Cemetery  
Greysarps Rd\_09 - Shire of  
Eltham Heritage Study 1992



Hurst Family Cemetery  
Greys Harps Rd Colour 1 -  
Shire of Eltham Heritage  
Study 1992



Hurst Family Cemetery  
Greys Harps Rd Colour 3 -  
Shire of Eltham Heritage  
Study 1992



Hurst Family Cemetery  
Greys Harps Rd Colour 7 -  
Shire of Eltham Heritage  
Study 1992

---

## Location

4-8 GREYSHARPS RD HURSTBRIDGE, NILLUMBIK SHIRE

## Municipality

NILLUMBIK SHIRE

## Level of significance

Included in Heritage Overlay

## Heritage Overlay Numbers

HO57

## Heritage Listing

Nillumbik Shire

---

## Statement of Significance

Last updated on - January 5, 2010

REVISED STATEMENT OF SIGNIFICANCE, CONTEXT, 2010

### ***What is significant?***

The Hurst family cemetery, all tombstones and remains, mature exotic planting, site and surrounding buildings to Diamond Creek and otherwise to a radius of 30 metres. Tree planting associated with the cemetery to a radius of 50 metres; including Atlas Cedar tree, Canary Island Pine tree, Peppercorn tree and Stone Pine tree.

### ***How is it significant?***

The cemetery is historically and socially significant to the Shire of Nillumbik. The Atlas Cedar, Canary Island Pine tree, Peppercorn tree and Stone Pine tree are historically and aesthetically significant to the Shire of Nillumbik.

### ***Why is it significant?***

The cemetery is historically significant because it is associated with the Hurst family, who were amongst the first settlers at Hurstbridge and because it is a rare example (in Melbourne) of a private burial ground established by a district's early settlers (Criteria B & H).

The Atlas Cedar was planted c1870. It is one of only a few examples in the Shire. The specimen is a good form, size and health (Criteria B & E).

The Canary Island Pine tree was planted c1870. It is an uncommon species within the Shire. The specimen is large and of excellent form (Criteria B & E).

The Peppercorn tree was planted in c1900. It is an example of a tree of a substantial age that has survived to the present day (Criteria B & E).

The Stone Pine tree was planted c1870. It is an uncommon species within the Shire. The specimen is tall with a well rounded canopy (Criteria B & E).

Heritage Study/Consultant Nillumbik - Shire of Eltham Heritage Study, David Bick, 1992;

Construction dates 1866,

Hermes Number 55819

Property Number

---

## Historical Australian Themes

EARLY SETTLEMENT

PROMINENT RESIDENTS

9.7.1 Dealing with human remains

9.7.3 Remembering the dead.

## Physical Description 1

The Hurst Family Cemetery comprises a fenced enclosure, a couple of surviving gravestones and the mature exotic trees - see the following evaluations. Some of the graves are unmarked.

## Usage/Former Usage

Original Use: Hurst Family Cemetery

Present Use: Closed private Cemetery

*This place/object may be included in the Victorian Heritage Register pursuant to the Heritage Act 2017. Check the Victorian Heritage Database, selecting 'Heritage Victoria' as the place source.*

*For further details about Heritage Overlay places, contact the relevant local council or go to Planning Schemes Online <http://planningschemes.dpcd.vic.gov.au/>*