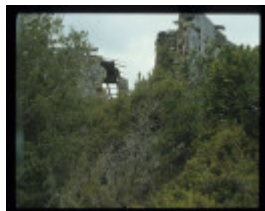
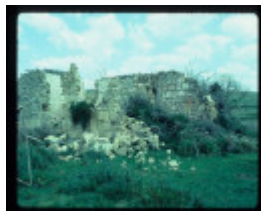

NATIONAL SCHOOL NO.741



NATIONAL SCHOOL NO.741
FEATURE



NATIONAL SCHOOL NO.741
FEATURE



NATIONAL SCHOOL NO.741
FEATURE

Location

BRIDGEWATER ROAD CAPE BRIDGEWATER, GLENELG SHIRE

Municipality

GLENELG SHIRE

Level of significance

Heritage Inventory Site

Heritage Inventory (HI) Number

H7121-0018

Heritage Listing

Victorian Heritage Inventory

Interpretation of Site Limestone school building no. 741.

Archaeological Significance Site is archaeologically significant as it has the potential to contain intact deposits relating to schooling during the mid 19th century.

Historical Significance	The site is historically significant as an early school building in the Cape Bridgewater area, and locally as it relates to the settlement of Cape Bridgewater.
Hermes Number	6598
Property Number	

History

Built in 1865.

This place/object may be included in the Victorian Heritage Register pursuant to the Heritage Act 2017. Check the Victorian Heritage Database, selecting 'Heritage Victoria' as the place source.

For further details about Heritage Overlay places, contact the relevant local council or go to Planning Schemes Online <http://planningschemes.dpcd.vic.gov.au/>