

DHURRINGILE



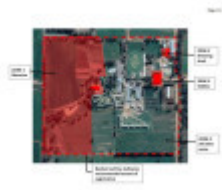
DHURRINGILE SOHE 2008



1 dhurringile prison
murchison entrance aug1984



dhurringile prison murchison
detail of window aug1984



Permit policy diagram



dhurringile prison murchison
side view aug1984



dhurringile prison murchison
stables aug1984



dhurringile prison murchison
woolshed side view aug1984

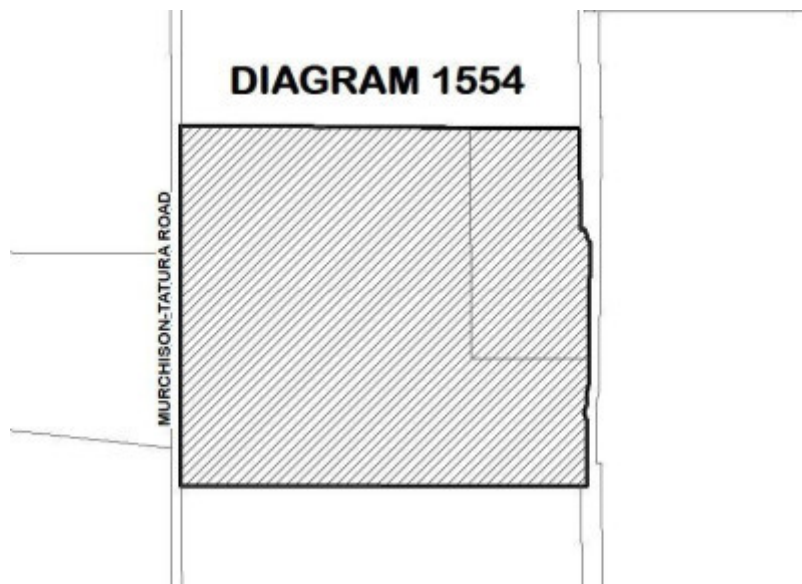


DIAGRAM 1554

Location

870 MURCHISON-TATURA ROAD DHURRINGILE, GREATER SHEPPARTON CITY

Municipality

GREATER SHEPPARTON CITY

Level of significance

Registered

Victorian Heritage Register (VHR) Number

H1554

Heritage Overlay Numbers

HO12

VHR Registration

August 20, 1982

Amendment to Registration

December 19, 2019

Heritage Listing

Victorian Heritage Register

Statement of Significance

Last updated on - June 1, 2020

WHAT IS SIGNIFICANT?

Dhurringile including the mansion, shearing shed, stables and all fixtures attached to the buildings at the time of registration including all fixtures attached to the buildings such as light fittings, stained glass windows, mantelpieces and built-in furniture in the mansion, mantelpieces and built-in furniture in the former residence in the stables, and associated equipment and machinery in the shearing shed and stables. It also includes any historical archaeology associated with the former uses of the place.

HOW IS IT SIGNIFICANT?

Dhurringile is of architectural, archaeological and historical significance to the State of Victoria. It satisfies the following criterion for inclusion in the Victorian Heritage Register:

Criterion A

Importance to the course, or pattern, of Victoria's cultural history.

Criterion C

Potential to yield information that will contribute to an understanding of Victoria's cultural history.

Criterion D

Importance in demonstrating the principal characteristics of a class of cultural places and objects.

WHY IS IT SIGNIFICANT?

Dhurringile and its outbuildings are of historical significance as an important example of a substantial pastoral property built on the proceeds of gold discoveries and subsequent pastoral wealth. It is significant for its association with the Winter and Winter-Irving families who were among the largest pastoral landholders in Victoria, and as an example of the work of prominent architectural firm, Lloyd Tayler and Wyatt. [Criterion A]

Dhurringile is also of historical significance for its use as an internment and World War II prisoner of war camp which reflects an aspect of Australian life which is not well known. Its subsequent use by the Presbyterian Church as a rural training centre for migrant boys from the United Kingdom is of historical significance for its association with the perceived need at the time to populate Australia with migrants of Anglo-Celtic background. [Criterion A]

Dhurringile is of archaeological significance for its potential to yield information about the underground tunnels and tanks associated with the nineteenth century water treatment system at the place, and for its potential to yield physical evidence associated with its twentieth century uses as a World War II internment camp and prison, and as a boy's home. [Criterion C]

Dhurringile is of architectural significance as one of Victoria's grandest mansions and a notable example of the Victorian Italianate style. [Criterion D]

Permit Exemptions

General Exemptions:

General exemptions apply to all places and objects included in the Victorian Heritage Register (VHR). General exemptions have been designed to allow everyday activities, maintenance and changes to your property, which don't harm its cultural heritage significance, to proceed without the need to obtain approvals under the Heritage Act 2017.

Places of worship: In some circumstances, you can alter a place of worship to accommodate religious practices without a permit, but you must **notify** the Executive Director of Heritage Victoria before you start the works or activities at least 20 business days before the works or activities are to commence.

Subdivision/consolidation: Permit exemptions exist for some subdivisions and consolidations. If the subdivision or consolidation is in accordance with a planning permit granted under Part 4 of the *Planning and Environment Act 1987* and the application for the planning permit was referred to the Executive Director of Heritage Victoria as a determining referral authority, a permit is not required.

Specific exemptions may also apply to your registered place or object. If applicable, these are listed below. Specific exemptions are tailored to the conservation and management needs of an individual registered place or object and set out works and activities that are exempt from the requirements of a permit. Specific exemptions prevail if they conflict with general exemptions.

Find out more about heritage permit exemptions [here](#).

Specific Exemptions:

It should be noted that Permit Exemptions can be granted at the time of registration (under s.38 of the Heritage Act). Permit Exemptions can also be applied for and granted after registration (under s.92 of the Heritage Act).

Under s.38 of the Heritage Act 2017 the Executive Director may include in his recommendation categories of works or activities which may be carried out in relation to the place or object without the need for a permit under Part 5 of the Act. The Executive Director must not make a recommendation for any categories of works or activities if he considers that the works or activities may harm the cultural heritage significance of the place or object. The following permit exemptions are not considered to cause harm to the cultural heritage significance of Dhurringile.

General Condition 1

All exempted alterations are to be planned and carried out in a manner which prevents damage to the fabric of the registered place or object.

General Condition 2

Should it become apparent during further inspection or the carrying out of works that original or previously hidden or inaccessible details of the place or object are revealed which relate to the significance of the place or object, then the exemption covering such works shall cease and Heritage Victoria shall be notified as soon as possible.

General Condition 3

All works should ideally be informed by Conservation Management Plans prepared for the place. The Executive Director is not bound by any Conservation Management Plan, and permits still must be obtained for works suggested in any Conservation Management Plan.

General Condition 4

Nothing in this determination prevents the Heritage Council from amending or rescinding all or any of the permit exemptions.

General Condition 5

Nothing in this determination exempts owners or their agents from the responsibility to seek relevant planning or building permits from the relevant responsible authority, where applicable.

Specific Permit Exemptions

The following works do not require a permit provided they do not harm the cultural heritage significance of the place.

Safety and security (all areas)

- All works associated with the operation of the place as a correctional facility.

- Works or activities, including emergency stabilisation, necessary to secure safety where a structure or part of a structure has been irreparably damaged or destabilised and poses a safety risk to its users or the public. In these instances every attempt must be made to conserve and retain as much significant fabric as possible. The Executive Director, Heritage Victoria, must be notified within seven days of the commencement of these works or activities.

Signage

- The erection of temporary non-illuminated signage for the purpose of ensuring public safety and wayfinding.
- Removal or replacement of external directional signage provided the size, location and material remains the same.

Zone 1: Mansion zone

The following works do not require a permit provided they do not impact on historical archaeological features or deposits and do not harm the cultural heritage significance of the place.

Landscape

- The processes of gardening, including mowing, removal of dead shrubs and replanting, disease and weed control, and maintenance to care for existing plants.
- Management and maintenance of established trees and shrubs including formative and remedial pruning, removal of deadwood, pest and disease control.
- The removal of dead or dangerous trees and emergency tree works to maintain safety.
- Vegetation protection and management of possums and vermin.
- Subsurface works involving the installation, removal or replacement of watering systems or services provided they do not impact on historical archaeological features or deposits.
- All current agricultural and dairying activities which ensures the land to the west, south and north of the mansion remains undeveloped. Tree plantations or similar require a permit application.
- All works to existing dams, above ground channels and water systems.
- Maintenance and removal of fencing and construction of new fencing.
- Maintenance, repairs and replacement of existing hard landscape elements such as paths, gutters, and sealed and unsealed roads, driveways and car parks.
- Installation, maintenance, replacement and removal of electrical, fire, security, telecommunications and CCTV services.

Exterior of mansion building (primary heritage significance)

- Minor patching, repair, cleaning and maintenance which replaces like with like without large-scale removal of or damage to the existing fabric or the large-scale introduction of new materials. Repairs must maximise protection and retention of fabric and include the conservation of existing details or elements. Any new materials used for repair must not exacerbate the decay of existing fabric due to chemical incompatibility, obscure existing fabric or limit access to existing fabric for future maintenance.
- Removal of items such as air conditioners, pipe work, ducting, wiring, antennae, aerials etc and making good.
- Maintenance, replacement and removal of electrical, fire, security, telecommunications and CCTV services.
- Maintenance, replacement or removal of existing heating, ventilation and air conditioning plant.
- Painting of currently painted surfaces using the same colour, type and quality of finish, provided that preparation or painting does not remove all evidence of earlier paint finishes.
- Vermin control activities.

Interior of mansion building (primary heritage significance)

The following works do not require a permit provided they do not harm the cultural heritage significance of the place.

- Demolition or removal of light-weight partition walls, suspended ceilings, office screens and partitions, light fittings, office fitouts, equipment and the like.
- Installation, removal or replacement of carpets, soft floor coverings and window furnishings.
- Repair and maintenance to toilets, bathrooms and kitchens.
- Refurbishment of existing bathrooms, toilets and kitchens including removal, installation or replacement of sanitary fixtures and associated piping, mirrors, wall and floor coverings provided that layouts remain unchanged.
- Removal or replacement of existing services including cabling, plumbing, wiring for safety, security and fire services that uses existing routes, conduits or voids.
- Installation, removal or replacement of curtains, curtain tracks, rods, blinds and other window dressings.
- Painting of currently painted surfaces using the same colour, type and quality of finish, provided that preparation or painting does not remove all evidence of earlier paint or other decorative schemes. No currently stained or varnished timberwork is to be painted.
- Removal of paint from originally unpainted surfaces including ceilings, wall panelling, joinery, doors, architraves and skirtings by non-abrasive methods.
- Maintenance, replacement and removal of electrical, fire, security, telecommunications and CCTV services.

Zone 2: Shearing shed zone T

The following works do not require a permit provided they do not impact on historical archaeological features or deposits and do not harm the cultural heritage significance of the place.

Landscape

- The processes of gardening, including mowing, removal of dead shrubs and replanting, disease and weed control, and maintenance to care for existing plants.
- Management and maintenance of established trees and shrubs including pruning, removal of deadwood, pest and disease control.
- The removal of dead or dangerous trees and emergency tree works to maintain safety.
- All current agricultural and dairying activities.
- Vegetation protection and management of possums and vermin.
- Subsurface works involving the installation, removal or replacement of watering systems or services provided they do not impact on historical archaeological features or deposits.
- All works to existing dams, above ground channels and water systems.
- Maintenance and removal of fencing and construction of new fencing.
- Maintenance, repairs and replacement to existing hard landscape elements such as paths, gutters, and sealed and unsealed roads, driveways and car parks.

Exterior of shearing shed building (primary heritage significance)

- Minor patching, repair and maintenance which replaces like with like without large-scale removal of or damage to the existing fabric or the large-scale introduction of new materials. Repairs must maximise protection and retention of fabric and include the conservation of existing details or elements. Any new materials used for repair must not exacerbate the decay of existing fabric due to chemical incompatibility, obscure existing fabric or limit access to existing fabric for future maintenance.

- Removal of items such as air conditioners, pipe work, ducting, wiring, antennae, aerials etc and making good.
- Maintenance, replacement and removal of electrical, fire, security, telecommunications and CCTV services.
- Weed and vermin control activities.
- Painting of currently painted surfaces using the same colour, type and quality of finish, provided that preparation or painting does not remove all evidence of earlier paint finishes.

Interior of shearing shed building (primary heritage significance)

The following works do not require a permit provided they do not harm the cultural heritage significance of the place.

- Maintenance, replacement and removal of electrical, fire, security telecommunications and CCTV services.
- All maintenance and alteration works to existing contemporary fencing, yards, structures and equipment associated with raising calves and dairying.

Zone 3: Stables zone

The following works do not require a permit provided they do not impact on historical archaeological features or deposits and do not harm the cultural heritage significance of the place.

Landscape

- The processes of gardening, including mowing, removal of dead shrubs and replanting, disease and weed control, and maintenance to care for existing plants.
- Management and maintenance of established trees and shrubs including pruning, removal of deadwood, pest and disease control.
- The removal of dead or dangerous trees and emergency tree works to maintain safety.
- All current agricultural and dairying activities.
- Vegetation protection and management of possums and vermin.
- Subsurface works involving the installation, removal or replacement of watering systems or services on the condition that works do not impact on historical archaeological features or deposits.
- All works to existing dams, above ground channels and water systems.
- Maintenance and removal of fencing and construction of new fencing.
- Maintenance, repairs and replacement of existing hard landscape elements such as paths, gutters, and sealed and unsealed roads, driveways and car parks.
- Installation, maintenance, replacement and removal of electrical, fire, security, telecommunications and CCTV services.

Exterior of stables building (primary heritage significance)

- Minor patching, repair and maintenance which replaces like with like without large-scale removal of or damage to the existing fabric or the large-scale introduction of new materials. Repairs must maximise protection and retention of fabric and include the conservation of existing details or elements. Any new materials used for repair must not exacerbate the decay of existing fabric due to chemical incompatibility, obscure existing fabric or limit access to existing fabric for future maintenance.
- Routine cleaning and maintenance activities including repair of glazing and cladding where fabric, design, size, form and method of fixing is repaired or replaced like for like.
- Removal of items such as air conditioners, pipe work, ducting, wiring, antennae, aerials etc and making good.

- Painting of currently painted surfaces using the same colour, type and quality of finish, provided that preparation or painting does not remove all evidence of earlier paint finishes.
- Maintenance, replacement and removal of electrical, fire and security, telecommunications and CCTV services.
- Maintenance, replacement or removal of existing heating, ventilation and air conditioning plant.
- Weed and vermin control activities.

Interior of stables building including former residence (primary heritage significance)

- Demolition or removal of light-weight partition walls, suspended ceilings, office screens and partitions, light fittings, office fitouts, equipment and the like.
- Installation, removal or replacement of carpets, flexible floor coverings, and window furnishings.
- Repair and maintenance to toilets, bathrooms and kitchens.
- Refurbishment of existing bathrooms, toilets and kitchens including removal, installation or replacement of sanitary fixtures and associated piping, mirrors, wall and floor coverings provided that layouts remain unchanged.
- Painting of currently painted surfaces using the same colour, type and quality of finish, provided that preparation or painting does not remove all evidence of earlier paint or other decorative schemes. No currently stained or varnished timberwork is to be painted.
- Removal of paint from originally unpainted surfaces including ceilings, wall panelling, joinery, doors, architraves and skirtings by non-abrasive methods.
- Removal or replacement of existing services including cabling, plumbing, wiring for safety, security and fire services that uses existing routes, conduits or voids.
- Maintenance, replacement and removal of electrical, fire, security, telecommunications and CCTV services.

Zone 4: all other areas

The following works do not require a permit provided they do not impact on historical archaeological features or deposits and do not harm the cultural heritage significance of the place.

Landscape

- All agricultural, farming and dairying activities.
- All gardening activities.
- Removal of vegetation and the planting of new vegetation.
- All works to existing dams, above ground channels and water systems.
- Maintenance, replacement and removal of electrical, fire, security and CCTV services.

Buildings

- All external and internal alterations to existing building and structures.
- Demolition and removal of existing building and structures.
- Construction of a building or construct or carry out works that are no greater than six metres in height above natural ground level.
- Installation, maintenance, replacement and removal of electrical, fire, security, telecommunications and CCTV services.

Construction dates	1877,
Architect/Designer	Tayler & Wyatt,
Heritage Act Categories	Registered place, Registered archaeological place,
Other Names	DHURRINGILE RURAL TRAINING FARM, PRESBYTERIAN BOYS HOME DHURRINGILE, H.M. DHURRINGILE PRISON, H.M.REHABILITATION CENTRE DHURRINGILE,
Hermes Number	863
Property Number	

History

Dhurringile was constructed in 1877 for pastoralist James Winter to the design of architects Lloyd Tayler and Frederick Wyatt. James Winter arrived in Victoria with his parents and three brothers in 1841. They initially settled near Ballarat and the discovery of gold on their land allowed for the family to invest in large pastoral holdings throughout northern Victoria. Three of the four Winter sons constructed substantial homes on their land in the Goulburn Valley, the grandest of them being Noorilim (VHR H0297), built by William Winter in 1878-79. James Winter owned Toolamba and after the original timber homestead was washed away in the Goulburn flood of 1870, he selected a site on a rise away from the river for the construction of a huge 68 room towered brick mansion named Dhurringile. The mansion was probably designed by Frederick Wyatt, as Lloyd Tayler, the more well-known of the two, was in England from January 1875 to May 1877. As well as the mansion, the property also had a manager's residence, extensive stabling, a shearing shed and other outbuildings. Dhurringile was lit by gas and a gas works was located at the rear of the mansion. An 1880 newspaper article reported that 'every portion of the house is supplied with gas, manufactured on the premises while, in order to facilitate verbal communications, speaking tubes are fitted throughout the building.' The shearing shed (reputed to be one of the largest in Victoria) and brick stables survive and both are located to the east of the mansion. Although often absent from his country property, James Winter was active in local community affairs and through his interest in agricultural innovation, significantly increased the stock carrying capacity of his property. He bred prize-winning sheep, was a founding member of the Northeastern Pastoral and Agricultural Society and served as councillor and later President of the Shire of Waranga in 1873. James Winter died in 1885 but Dhurringile stayed in the ownership of the Winter family until 1907. Dhurringile then passed through a number of hands before being purchased in December 1925 by Vincent Vernon Hart. It appears that Dhurringile had been vacant for many years and remained unoccupied while in Hart's ownership. In 1939, the Commonwealth government negotiated with Hart to rent the property for use as an internment camp for German and Italian aliens. Internees were held at Dhurringile until they were transferred to other camps but by March 1940, the Department of the Interior had vacated the property. In 1941, Dhurringile was taken up by the army for use as a Prisoner of War Camp for Germans captured in the Middle East. The Murchison camp consisted of five compounds including the Dhurringile mansion which was intended for German officers who were to be given more favourable treatment than other ranks. In July 1945, the German prisoners were transferred to other sites and at the end of the war, the site was cleared of huts and all other military buildings. In 1947, Dhurringile was purchased by the Presbyterian Church for use as a home for immigrant boys from the United Kingdom whose fathers had died during the war. The intention was to train the boys in farming methods to prepare them for employment. By this time the mansion was in a deteriorating condition and substantial repairs and alterations were needed. The Dhurringile Rural Training Farm did not open until 13 June 1951. Life in the home was spartan, difficulties were encountered in recruiting boys from Scotland and the scheme had limited success. The Commonwealth Government continued to provide increasing financial support to the home in accordance with an immigration policy to promote British migration, but difficulties persisted and the Dhurringile Rural Training Farm closed in 1964. In March 1965, Dhurringile was purchased by Victorian Government Penal Department for use in the rehabilitation of alcoholic prisoners. The farm was re-fenced and the agricultural part of the property rehabilitated to provide a level of self-support. Prisoners provided labour for extensive repair and alteration works at the mansion. Dhurringile currently operates as a correctional facility, and the mansion has been adapted for use as an administrative and training centre.

Extent of Registration

Heritage Act 2017

NOTICE OF REGISTRATION

As Executive Director for the purpose of the **Heritage Act 2017**, I give notice under section 53 that the Victorian Heritage Register is amended by modifying a place in the Heritage Register:

Number: H1554

Category: Registered Place, Registered Archaeological Place

Place: Dhurringile

Location: 870 Murchison-Tatura Road, Dhurringile

Municipality: City of Greater Shepparton

All of the place shown hatched on Diagram 1554 encompassing all of Crown Allotment 94B, Parish of Murchison North and part of Crown Allotment 2063, Parish of Murchison North

19 December 2019

STEVEN AVERY

Executive Director

This place/object may be included in the Victorian Heritage Register pursuant to the Heritage Act 2017. Check the Victorian Heritage Database, selecting 'Heritage Victoria' as the place source.

For further details about Heritage Overlay places, contact the relevant local council or go to Planning Schemes Online <http://planningschemes.dpcd.vic.gov.au/>