

## WATER WHEEL AND MINE MACHINERY



WATER WHEEL AND MINE MACHINERY SOHE 2008



1 wells battery weon mine  
cunningham gully  
murmungee side elevation



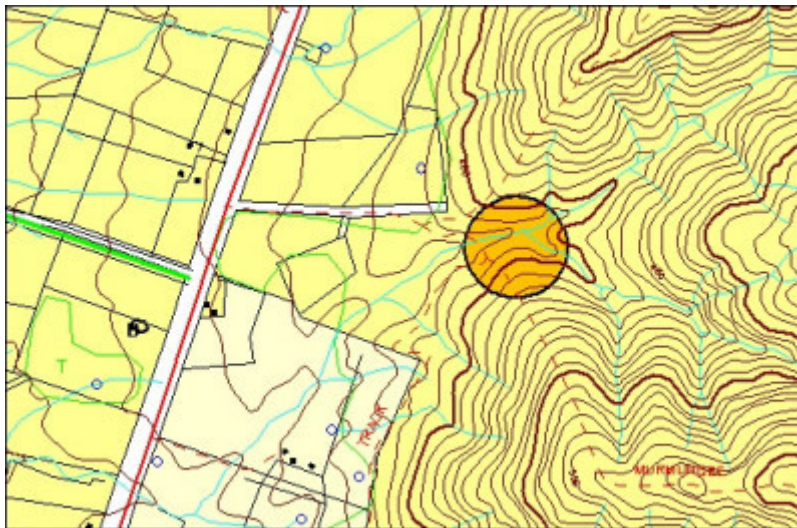
H00356 wells battery weon  
mine cunningham gully  
murmungee2 april2003



H00356 wells battery  
murmungee6 apr03



H00356 wells battery  
murmungee5 apr03 pm1



H00356 location

### Location

WEONE MINE, WELLS BOUNDARY TRACK MURMUNGEE, WANGARATTA RURAL CITY

## Municipality

WANGARATTA RURAL CITY

## Level of significance

Registered

## Victorian Heritage Register (VHR) Number

H0356

## Heritage Overlay Numbers

HO163

## VHR Registration

October 9, 1974

## Heritage Listing

Victorian Heritage Register

---

## Statement of Significance

Last updated on - November 30, 1999

Situated in a low forested glade, this ramshackle collection of structures is probably unique in Victoria. Although erected in fairly recent times, it demonstrates superbly the small gold mining practices of the past. The engine and crusher originated from an old mine at Stanley and survive from earlier times. The roughly hewn timber and iron structures epitomise the aesthetics of rough bush buildings.

## Permit Exemptions

### General Exemptions:

General exemptions apply to all places and objects included in the Victorian Heritage Register (VHR). General exemptions have been designed to allow everyday activities, maintenance and changes to your property, which don't harm its cultural heritage significance, to proceed without the need to obtain approvals under the Heritage Act 2017.

**Places of worship:** In some circumstances, you can alter a place of worship to accommodate religious practices without a permit, but you must [notify](#) the Executive Director of Heritage Victoria before you start the works or activities at least 20 business days before the works or activities are to commence.

**Subdivision/consolidation:** Permit exemptions exist for some subdivisions and consolidations. If the subdivision or consolidation is in accordance with a planning permit granted under Part 4 of the *Planning and Environment Act 1987* and the application for the planning permit was referred to the Executive Director of Heritage Victoria as a determining referral authority, a permit is not required.

Specific exemptions may also apply to your registered place or object. If applicable, these are listed below.

Specific exemptions are tailored to the conservation and management needs of an individual registered place or object and set out works and activities that are exempt from the requirements of a permit. Specific exemptions prevail if they conflict with general exemptions.

Find out more about heritage permit exemptions [here](#).

Construction dates	1939,
Heritage Act Categories	Registered place,
Other Names	WELLS' MURMUNGEE BATTERY,
Hermes Number	866
Property Number	

---

## History

### SITE HISTORY:

(David Bannear 1994)

Gold was discovered in Cunningham's Gully in 1858. Reefs were opened in the vicinity from the mid-1860s, the first of them being McLean's Reef, discovered by alluvial miners in McLean's Gully. A water-powered battery was erected in Cunningham's Gully by Dean & Co. in 1868, to crush for their King, Annandale, Solway reefs. The Murmungee–Bowman's Forest reefs were briefly the major gold producers on the Beechworth field. Operations at that time were short-lived, though, due in part to the scarcity of water in the locality, and the battery was removed in 1871. When the Bowman's Forest reefs were revived in the mid-1880s, a steam-driven battery was erected at Murmungee by George Biddington. Development of the reefs was again limited to surface scratchings, where rich stone was easily procured. The mining registrar wrote of the reefs in 1887 that 'up to the present none of them have developed into good permanent reefs'.

There were small parties working on reefs about Murmungee early this century. One of them, Wells and party, erected a small battery on their prospecting claim on McLean's Reef in 1915. The party was still prospecting in 1917. The fate of the 1915 battery is not known, but according to information cited by the National Trust, the existing plant was erected in 1939 and the mine, known as the Weone, worked (unprofitably) until the late 'forties by Walter Wells and his son Max. They crushed stone, not just from the Weone, but from various quartz shows in the vicinity. The shallow workings evident near the battery today suggest that the Murmungee quartz workings never progressed much beyond the surface scratchings noted in the mid-1880s. In the early 1980s, the local branch of the National Trust proposed that the waterwheel and other remaining plant be re-sited to Beechworth, after the theft of several components from the Cunningham Gully site. The plant is still owned by Max Wells.

References: Department of Mines Annual Report, 1906, 1915, 1917, Flett, p. 68, LCC, p. 87, Recommendation N8, National Trust of Australia (Victoria) file no. 3276

Australian Heritage Commission, file no. 004531 2/08/230/0011/02

Mining Surveyors' Reports (Beechworth Subdivision), March & June 1866, December 1867, March–December 1868, December 1870, March–September 1885

Associated People: Tenant WALTER C WELLS

## Extent of Registration

*United Shire of Beechworth*. No.356. Water Wheel and Mine Machinery, Weone Mine, Cunningham Gully, Murmungee.

[*Victoria Government Gazette* No 100 Wednesday, October 9 1974 p.3650]

*This place/object may be included in the Victorian Heritage Register pursuant to the Heritage Act 2017. Check the Victorian Heritage Database, selecting 'Heritage Victoria' as the place source.*

*For further details about Heritage Overlay places, contact the relevant local council or go to Planning Schemes Online <http://planningschemes.dpcd.vic.gov.au/>*