

# Victorian Heritage Database Report

Report generated on - 16/12/25

---

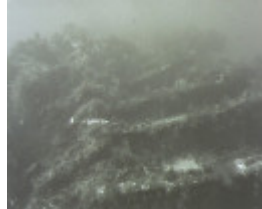
## ALBERT WILLIAM



S15AlbertWilliam\_PointGellibra  
unknown



S15AlbertWilliam\_PointGellibra  
unknown



S15AlbertWilliam\_PointGellibra  
unknown

---

### Location

Port Phillip Bay, Point Gellibrand

### Victorian Heritage Register (VHR) Number

S15

### Date lost

18/05/1955

### Official number

47480

### Construction material

Iron

### Hull

1 deck and a break, 3 masts, elliptic stern, clinker built, shield head, iron framework.

### Propulsion

Sail

### Number of masts

**Length/Breadth/Depth**

162.50 Feet / 26.00 Feet / 17.30 Feet

**Builder**

James Laing UID: 102

**Year of construction**

1863

**Built port**

Sunderland, UK UID: 102

**Built country**

England

**Registration Number**

13 of 1933

**Registration Port**

Melbourne

**Date lost**

18/05/1955

**Departure**

Melbourne

**Destination**

Geelong

**Cargo**

Wool lighter. Empty - used as a home.

**Owner**

Victorian Lighterage Pty Ltd, 54 William St, Melbourne

**Weather conditions**

SW gale; 50 knots - freak storm

**Cause of loss**

Totally wrecked while under tow when cable parted from tug Swiftness. Thrown against a reef off Point Gellibrand (UID 9)

### **Number of crew**

2

### **Crew comments**

A married couple: Hugh and Anne Bennett were living on the lighter with their dog Pixie.<br /> UID 9, 152

### **VHR history**

Hugh and Anne Bennett had been living on the empty wool-lighter for a few months and lost all their possessions. With their dog they spent a gruelling 28 hours on board after stranding, before being taken off. Crane broke off in gale, nearly capsizing the lighter. Army engineers blasted the remains on 18 August 1961. The mast was hauled away as scrap. Had been partially broken up earlier. Ex barque.